

TEXAS BOARD OF WATER ENGINEERS

H. A. Beckwith, Chairman

A. P. Rollins, Member

O. F. Dent, Member

Larry S. Campbell  
Parks and Wildlife Dept.  
4002 North Chadbourne St.  
San Angelo, Texas

BULLETIN 5414

RECORDS OF WATER-LEVEL MEASUREMENTS IN REEVES COUNTY, TEXAS

Compiled by

C. F. Follett, Engineer

Texas Board of Water Engineers

Prepared in cooperation with the Geological Survey  
United States Department of the Interior

September 1954

1914  
The Connecticut Press Co.  
Hartford, Conn.

RECORDS OF WATER-LEVEL MEASUREMENTS IN REEVES COUNTY, TEXAS

Compiled by

C. R. Follett, Engineer

Texas Board of Water Engineers

September 1954

This bulletin contains measurements of the depth to water in 123 wells in Reeves County, which is in the western part of Texas. It is one of a series of publications by the Texas Board of Water Engineers which contain measurements of the water levels in selected observation wells made as a part of the cooperative program of ground-water investigations throughout the State by the United States Geological Survey and the Texas Board of Water Engineers. The records for Reeves County cover the period from 1930 through 1953; however, no measurements were made during the years 1933-38 and 1943-45.

During 1939 and 1940 an inventory of water wells was made in Reeves County as part of the Pecos River Joint Investigation, which covered part or all of Crane, Loving, Pecos, Reeves, and Ward Counties in Texas, and part of southeastern New Mexico. The results of the Texas part were published by the Texas Board of Water Engineers in 1941. Water-level measurements made in Reeves County during the time of the inventory are included in this bulletin.

During 1946 and 1947 a new inventory of irrigation wells was made in Ward and Reeves Counties as a further study of the development of ground water for irrigation in the Pecos area. Some of the results were published by the Texas Board of Water Engineers as a progress report in 1947.

Usually if more than one water-level measurement is made during a month only the highest water level is given in this report. Most of the water levels are reported in feet below the land surface; those for flowing wells are indicated by a plus (+) sign preceding the figure. The accompanying map shows the locations of the observation wells. Hydrographs showing the fluctuation of water levels in 6 wells and the precipitation at Pecos and Balmorhea are given on pages 29 and 30. Records of water wells, geologic data, pumpage data, and discussion of water levels are given in the following publications.

LIST OF PUBLICATIONS

BROADHURST, W. L., SUNDSTROM, R. W., and WEAVER, D. E., 1949, Public water supplies in western Texas: U. S. Geol. Survey Water-Supply Paper 1106.

\_\_\_\_\_, 1949, Public water supplies in western Texas: Texas Board Water Engineers.

U. S. DEPARTMENT OF THE INTERIOR, GEOLOGICAL SURVEY, GROUND WATER DIVISION, 1941, Pecos River Joint Investigation Part III, Water resources of the Pecos River Basin Report B, Geology and Ground water: Texas Board Water Engineers.\*

DENNIS, P. E., and LANG, JOE W., 1941, Records of wells and springs and analyses of water in Loving, Ward, Reeves, and northern Pecos Counties, Tex.: Pecos River Basin, v. 2, Texas Board Water Engineers.\*

\_\_\_\_\_, 1941, Records of auger holes including logs, records of fluctuations of water levels, water analyses, and maps showing locations of wells: Pecos River Basin, v. 3, Texas Board Water Engineers.\*

HOOD, J. W., and KNOWLES, D. B., 1952, Summary of ground-water development in the Pecos area, Reeves and Ward Counties, Tex.: Texas Board Water Engineers Bull. 5202.

HOWARD, C. S., 1942, Quality of stored water available for use in the Lower Basin of the Pecos River, Tex.: Am. Geophys. Union Trans. p. 594-598.

KNOWLES, D. B., and LANG, JOE W., 1947, Preliminary report on the geology and ground-water resources of Reeves County, Tex.: Texas Board Water Engineers.

MEINZER, O. E., and WENZEL, L. K., 1943, Water levels and artesian pressure in observation wells in the United States in 1941, pt. 4: U. S. Geol. Survey Water-Supply Paper 939.

\_\_\_\_\_, 1944, Water levels and artesian pressure in observation wells in the United States in 1942, pt. 4: U. S. Geol. Survey Water-Supply Paper 947.

WHITE, W. N., GALES, H. S., and NYE, S. S., 1938, Ground-water resources of the Balmorhea area in western Texas: Texas Board Water Engineers.

\_\_\_\_\_, 1941, Geology and ground-water resources of the Balmorhea area of western Texas: U. S. Geol. Survey Water-Supply Paper 849-C.

---

\* Out of print. Copies available for reference in some public libraries and at the Austin office of the United States Geological Survey.

REEVES COUNTY, TEXAS  
OBSERVATION WELLS

January 1954

-4-

Bulletin 5414  
Texas Board of Water Engineers  
in cooperation with  
U. S. Geological Survey



REEVES COUNTY

B-8. Lat. 31°46', long. 103°51'. Depth 173 feet.

Date	Water level	Date	Water level	Date	Water level
June 14, 1940	100.42	Nov. 16, 1948	102.30	Mar. 31, 1950	100.16
Mar. 11, 1941	110.5	Feb. 3, 1949	101.19		

D-4. Lat. 31°37', long. 103°52'. Depth 300 feet.

Mar. 13, 1940	165.45	June 29, 1949	162.59	Oct. 16, 1949	161.87
Nov. 15, 1948	162.31	Aug. 5	162.62	Mar. 31, 1950	163.25
Feb. 3, 1949	162.32	Sept. 1	162.61		

D-9. Lat. 31°31', long. 103°42'. Depth 227 feet.

Jan. 4, 1940	216.55	Sept. 13, 1940	212.28	Aug. 5, 1949	213.18
Feb. 13	217.0	Nov. 21	212.5	Oct. 16	212.79
Mar. 13	212.85	Oct. 9, 1948	212.99	Jan. 8, 1950	213.55
June 16	212.15	Feb. 3, 1949	213.02	Mar. 3	213.36
Aug. 8	212.33	June 29	212.96		

D-13. Lat. 31°24', long. 103°50'. Depth 75 feet.

May 16, 1940	66.05	Aug. 5, 1949	66.56	Feb. 15, 1951	64.84
Nov. 16	66.0	Sept. 4	66.54	Jan. 28, 1952	65.30
Oct. 9, 1948	66.51	Oct. 16	66.04	Feb. 6, 1953	65.57
Feb. 3, 1949	66.41	Jan. 11, 1950	65.74	Jan. 22, 1954	66.02
June 29	66.63	Mar. 3	65.76		

D-14. Lat. 31°26', long. 103°52'. Depth 500 feet.

Mar. 14, 1940	22.22	Oct. 16, 1949	12.71	Sept. 17, 1950	13.11
June 16	20.79	Jan. 11, 1950	12.45	Oct. 25	12.27
Oct. 9, 1948	13.70	Mar. 3	12.52	Nov. 21	12.11
June 29, 1949	12.39	June 19	14.46	Feb. 15, 1951	12.41
Aug. 5	12.76	July 16	13.67		
Sept. 1	13.06	Aug. 20	13.04		

## REEVES COUNTY

D-16. Lat. 31°30', long. 103°51'. Depth 255 feet.

Date	Water level	Date	Water level	Date	Water level
Mar. 14, 1940	241.3	Aug. 5, 1949	234.28	Mar. 3, 1950	233.89
Oct. 9, 1948	234.29	Sept. 1	229.28	Feb. 15, 1951	235.46
Feb. 3, 1949	233.52	Oct. 16	233.99		
June 29	236.40	Jan. 11, 1950	233.90		

D-26. Lat. 31°20', long. 103°46'. Depth 160 feet.

Date	Water level	Date	Water level	Date	Water level
Feb. 13, 1940	26.9	Aug. 5, 1949	20.16	July 16, 1950	19.93
June 1	20.26	Sept. 1	20.18	Aug. 20	19.94
Sept. 13	20.7	Oct. 16	20.15	Sept. 17	19.90
Oct. 8, 1948	21.19	Jan. 8, 1950	20.00	Oct. 25	19.70
Feb. 3, 1949	20.55	Mar. 4	19.92	Nov. 21	19.86
June 7	20.06	June 19	19.92	Feb. 15, 1951	19.52

D-30. Lat. 31°22', long. 103°46'. Depth 60 feet.

Date	Water level	Date	Water level	Date	Water level
Oct. 3, 1939	56.2	June 29, 1949	53.30	Aug. 20, 1950	53.59
Feb. 13, 1940	53.4	Aug. 5	53.30	Sept. 17	53.31
Mar. 13	54.5	Sept. 1	53.39	Oct. 25	53.00
June 16	54.65	Oct. 16	53.06	Nov. 21	53.86
Aug. 8	53.58	Jan. 8, 1950	52.99	Feb. 15, 1951	53.65
Sept. 13	53.68	Mar. 4	53.67	Feb. 6, 1953	53.16
Oct. 8, 1948	54.09	June 19	54.10	Jan. 22, 1954	53.26
Feb. 3, 1949	53.46	July 16	54.00		

D-31a. Lat. 31°23', long. 103°45'.

Date	Water level	Date	Water level	Date	Water level
Jan. 28, 1952	47.65	Feb. 6, 1953	45.44	Jan. 22, 1954	47.16

D-32. Lat. 31°22', long. 103°43'. Depth 190 feet.

Date	Water level	Date	Water level	Date	Water level
Aug. 8, 1940	168.33	Mar. 4, 1950	175.79	Sept. 17, 1950	177.17
Sept. 13	171.8	June 19	176.48	Oct. 25	178.99
Oct. 8, 1948	171.75	July 16	176.54	Nov. 21	177.31
Jan. 21, 1950	175.68	Aug. 20	176.87	Feb. 15, 1951	177.94



REEVES COUNTY

D-33. Lat. 31°33', long. 103°43'. Depth 185 feet.

Date	Water level	Date	Water level	Date	Water level
Feb. 13, 1940	167.5	Sept. 13, 1940	164.57	Mar. 4, 1950	168.45
June 16	164.13	Oct. 8, 1948	165.72	Feb. 15, 1951	169.54
Aug. 8	164.67	Jan. 21, 1950	168.41	Jan. 28, 1952	173.29

D-36. Lat. 31°21', long. 103°40'. Depth 137 feet.

Dec. 15, 1939	124.80	Aug. 8, 1940	122.59	Mar. 2, 1942	122.31
Feb. 13, 1940	122.59	Nov. 21	125.95	Dec. 30	122.56
Apr. 17	122.85	Feb. 14, 1941	123.94		
May 16	122.45	May 10	124.75		

D-54. Lat. 31°29', long. 103°43'. Depth 236 feet.

Oct. 6, 1948	224.45	Jan. 8, 1950	221.40	Oct. 25, 1950	221.53
Feb. 3, 1949	200.96	Mar. 3	221.91	Nov. 21	221.45
June 29	221.03	June 19	221.54	Feb. 15, 1951	223.02
Aug. 5	221.68	July 16	221.41	Jan. 28, 1952	222.94
Sept. 1	221.20	Aug. 20	221.52	Feb. 6, 1953	224.05
Oct. 16	221.07	Sept. 17	221.63	Jan. 22, 1954	224.54

D-75. Lat. 31°24', long. 103°40'.

Oct. 19, 1949	142.80	Sept. 28, 1950	158.0	Feb. 5, 1953	186.30
Feb. 28, 1950	137.91	Feb. 9, 1951	154.36	Jan. 22, 1954	203.35
Mar. 10	142.1	Jan. 29, 1952	169.80		

D-80. Lat. 31°24', long. 103°41'.

Feb. 5, 1949	155.39	Feb. 9, 1951	168.36	Jan. 22, 1954	194.03
Jan. 14, 1950	161.46	Jan. 29, 1952	177.90		
Feb. 28	160.93	Feb. 5, 1953	184.83		

D-91. Lat. 31°21', long. 103°40'.

Oct. 12, 1948	141.69	Feb. 28, 1950	152.68	Jan. 23, 1954	213.90
Feb. 5, 1949	143.16	Jan. 30, 1952	181.87		
Jan. 9, 1950	153.27	Feb. 5, 1953	200.07		

## REEVES COUNTY

E-1. Lat. 31°36', long. 103°38'. Depth 171 feet.

Date	Water level	Date	Water level	Date	Water level
May 16, 1940	173.51	Sept. 1, 1949	173.10	Feb. 16, 1951	173.01
Nov. 6	173.6	Oct. 16	172.98	Jan. 29, 1952	173.37
Feb. 10, 1949	173.10	Jan. 12, 1950	172.89	Feb. 4, 1953	173.82
June 28	172.98	Mar. 20	173.00	Jan. 20, 1954	175.80
Aug. 5	172.99	July 23	172.49		

E-3. Lat. 31°36', long. 103°33'. Depth 198 feet.

Jan. 5, 1940	24.10	May 14, 1941	24.37	Feb. 13, 1951	26.32
May 16	26.26	Mar. 4, 1942	23.41	Jan. 28, 1952	26.20
June 27	26.24	Feb. 10, 1949	24.81	Feb. 4, 1953	27.36
July 12	25.90	Jan. 12, 1950	25.55	Jan. 20, 1954	27.90
Feb. 11, 1941	24.72	Mar. 3	26.32		

E-6. Lat. 31°35', long. 103°36'. Depth 77 feet.

June 16, 1940	41.87	June 29, 1949	42.55	July 23, 1950	42.69
Aug. 7	41.76	Jan. 21, 1950	42.34	Feb. 16, 1951	42.77
June 11, 1941	41.97	Mar. 20	42.84		

E-10. Lat. 31°28', long. 103°36'. Depth 500 feet.

Feb. 18, 1949	66.73	Jan. 23, 1950	*73.62	Sept. 26, 1950	*85.26
June 24	*78.73	Feb. 28	*74.00	Oct. 30	*81.57
July 6	*78.83	Mar. 2	*73.85	Nov. 20	*81.33
Aug. 10	*82.16	Apr. 3	*80.87	Dec. 3	81.75
Sept. 29	*78.75	May 29	*82.33	Feb. 15, 1951	77.88
Oct. 26	76.13	June 1	*82.97	Jan. 29, 1952	90.95
Nov. 1	75.96	July 31	*89.30	Feb. 5, 1953	103.09
Dec. 31	*74.39	Aug. 14	*87.4	Jan. 22, 1954	109.38

E-12. Lat. 31°30', long. 103°32'. Depth 51 feet.

Jan. 4, 1940	18.75	Nov. 16, 1940	19.47	Mar. 3, 1950	22.17
Feb. 12	18.81	Feb. 11, 1941	20.04	Feb. 13, 1951	21.64
Mar. 26	18.92	May 14	20.00	Feb. 4, 1953	23.33
May 15	19.33	Mar. 10, 1948	21.10	Jan. 20, 1954	22.56
June 27	19.17	Feb. 5, 1949	21.45		
Sept. 10	19.57	Jan. 12, 1950	22.04		

\* Monthly highest water level from recorder graph.

-9-  
REEVES COUNTY

E-16. Lat. 31°30', long. 103°31'. Depth 145 feet, casing slotted below 56 feet.

Date	Water level	Date	Water level	Date	Water level
Nov. 4, 1946	15.39	Feb. 4, 1949	15.12	Feb. 13, 1951	16.48
Dec. 4	15.38	Mar. 7	15.56	Jan. 29, 1952	18.57
Jan. 29, 1947	15.32	Jan. 12, 1950	17.37	Feb. 4, 1953	18.37
Mar. 9, 1948	16.83	Mar. 3	17.48	Jan. 20, 1954	21.90

E-37. Lat. 31°25', long. 103°30'. Depth 136 feet.

Nov. 21, 1939	+3.9	Aug. 20, 1941	+0.1	Feb. 27, 1950	12.93
Jan. 16, 1940	+5.4	Oct. 22	+8.1	Feb. 16, 1951	17.95
Mar. 1	+4.3	Dec. 16	+6.5	Jan. 31, 1952	26.92
May 3	+0.5	Feb. 28, 1942	+6.1	Feb. 4, 1953	31.52
Oct. 18	+3.0	Apr. 29, 1947	0.54	Jan. 21, 1954	35.53
Feb. 6, 1941	+5.4	Mar. 9, 1948	+3.3		

E-38. Lat. 31°25', long. 103°30'.

Nov. 21, 1939	+5.9	Feb. 6, 1941	+6.9	Apr. 28, 1947	+1.2
Jan. 16, 1940	+7.0	Aug. 20	+2.3	Mar. 9, 1948	+5.6
Mar. 1	+6.4	Oct. 22	+7.4	Feb. 27, 1950	7.85
May 3	+2.4	Dec. 16	+8.2	Jan. 30, 1952	31.88
June 26	+2.3	Feb. 28, 1942	+7.5		
Oct. 18	+5.1	Aug. 20	+1.7		

E-39. Lat. 31°25', long. 103°30'. Depth 320 feet.

Nov. 24, 1939	+3.9	Aug. 8, 1941	.04	Feb. 8, 1949	3.67
Jan. 15, 1940	+4.2	Oct. 22	+6.9	Jan. 12, 1950	13.46
Mar. 1	+4.0	Dec. 16	+6.2	Feb. 27	14.56
May 4	+ .9	Feb. 28, 1942	+6.5	Feb. 16, 1951	18.87
June 26	+1.0	Apr. 29, 1947	1.9		
Feb. 6, 1941	+5.2	Mar. 9, 1948	+2.8		

REEVES COUNTY

E-40. Lat. 31°25', long. 103°30'. Depth 285 feet.

Date	Water level	Date	Water level	Date	Water level
Apr. 16, 1940	0.94	Feb. 7, 1942	+3.3	Dec. 30, 1942	+1.4
May 24	0.9	Mar. 14	+2.3	Apr. 29, 1947	3.24
June 25	1.69	Apr. 26	+0.5	Mar. 9, 1948	0.00
July 29	2.30	May 7	0.31	Feb. 8, 1949	4.02
Aug. 16	1.48	June 12	1.58	Jan. 12, 1950	11.98
Feb. 6, 1941	+2.7	July 23	3.32	Feb. 27	12.01
Oct. 22	+1.9	July 30	4.50	Feb. 15, 1951	16.77
Nov. 22	+3.0	Aug. 29	1.43	Jan. 30, 1952	33.97
Dec. 10	+2.8	Sept. 24	+0.3	Feb. 4, 1953	51.89
16	+3.0	Oct. 16	+0.9	Jan. 21, 1954	67.78
Jan. 31, 1942	+3.3	Nov. 2	+0.4		

E-41. Lat. 31°25', long. 103°29'. Depth 210 feet.

Dec. 2, 1939	+4.3	Oct. 19	+3.3	Feb. 8, 1949	4.20
Jan. 15, 1940	+4.1	Feb. 5, 1941	5.4	Jan. 12, 1950	8.08
Mar. 1	+4.0	Oct. 22	+1.4	Feb. 27	7.92
May 3	+1.7	Dec. 16	+5.9	Feb. 16, 1951	10.97
June 25	+1.7	Feb. 28, 1942	+6.0		

E-42. Lat. 31°25', long. 103°29'. Depth 285 feet.

Nov. 22, 1939	+12.5	Oct. 22, 1941	+14.8	Feb. 27, 1950	+3.5
Jan. 15, 1940	+13.7	Dec. 16	+15.1	Feb. 16, 1951	+0.5
Mar. 1	+14.5	Feb. 28, 1942	+15.3	Jan. 13, 1952	5.95
May 3	+13.0	Dec. 30	+12.6	Feb. 4, 1953	14.52
June 20	+12.0	Apr. 29, 1947	+10.7	Jan. 21, 1954	23.57
Oct. 18	+13.5	Mar. 9, 1948	+ 8.6		
Feb. 5, 1941	+12.8	Feb. 8, 1949	+8.2		
Aug. 20	+14.0	Jan. 12, 1950	+2.5		

E-43. Lat. 31°26', long. 103°29'.

Dec. 5, 1939	+17.8	Feb. 28, 1942	+19.9	Mar. 12, 1950	0.57
Jan. 15, 1940	+17.4	Aug. 20	+12.5	May 29	18.45
Mar. 1	+17.5	Dec. 30	+16.8	June 10	22.53
May 2	+11.8	Apr. 29, 1947	+10.0	July 10	29.93
June 20	+12.0	Aug. 19, 1949	29.71	Aug. 5	25.98
Oct. 18	+15.0	Sept. 23	17.45	Sept. 10	28.49
Feb. 5, 1941	+18.1	Jan. 12, 1950	+0.17	Oct. 25	16.00
Aug. 20	+14.6	18	0.05	Nov. 20	12.46
Dec. 16	+19.6	Feb. 21	+0.83		

REEVES COUNTY

E-44. Lat. 31°26', long. 103°29'. Depth 190 feet.

Date	Water level	Date	Water level	Date	Water level
Nov. 20, 1939	+12.3	Dec. 28, 1942	+14.5	June 26, 1950	33.81
Jan. 15, 1940	+12.5	Apr. 29, 1947	+6.5	Aug. 30	43.39
Mar. 1	+13.6	Mar. 9, 1948	+8.2	Sept. 10	34.12
May 1	+8.0	Feb. 8, 1949	+3.8	Oct. 25	20.79
June 20	+5.0	Aug. 19	36.65	Nov. 20	17.19
Dec. 18	+9.4	Sept. 23	22.44	Feb. 13, 1951	9.63
Feb. 15, 1941	+13.6	Jan. 12, 1950	3.77	Jan. 31, 1952	31.25
Aug. 20	+6.9	Feb. 22	3.01	Feb. 4, 1953	50.18
Oct. 22	+14.5	Mar. 4	3.38	Jan. 21, 1954	72.44
Dec. 16	+14.4	May 29	23.94		

E-46. Lat. 31°26', long. 103°30'. Depth 210 feet, casing slotted below 141 feet.

Apr. 26, 1947	+7.7	Jan. 25, 1950	2.88	Jan. 31, 1952	30.99
Mar. 9, 1948	+7.9	Feb. 22	3.68	Feb. 4, 1953	49.70
Feb. 8, 1949	+2.4	Feb. 13, 1951	9.66		

E-52. Lat. 31°27', long. 103°29'. Depth 308 feet.

Dec. 5, 1939	+7.5	Feb. 5, 1941	+6.8	Aug. 20	+6.3
Jan. 15, 1940	+7.1	Aug. 20	+6.2	Dec. 30	+8.8
Mar. 1	+6.5	Oct. 22	+9.1	Feb. 8, 1949	+4.1
May 2	+6.3	Dec. 16	+9.3		
Oct. 18	+6.8	Feb. 28, 1942	+7.7		

E-53. Lat. 32°25', long. 102°28'. Depth 440 feet.

Jan. 2, 1940	13.38	Sept. 10, 1940	11.52	Sept. 1, 1949	13.75
Feb. 8	12.40	Nov. 15	8.92	Mar. 12, 1950	14.04
Mar. 2	12.47	Feb. 12, 1941	9.43	Nov. 11	14.01
Apr. 1	11.79	May 14	8.55	Feb. 15, 1951	13.50
May 7	11.41	June 13, 1949	10.94		
July 20	11.14	Aug. 19	13.42		

REEVES COUNTY

E-56. Lat. 32°25', long. 103°25'. Depth 66 feet.

Date	Water level	Date	Water level	Date	Water level
Oct. 9, 1939	8.00	July 20, 1940	7.88	June 17, 1949	10.80
Feb. 8, 1940	8.23	Sept. 10	8.21	Jan. 12, 1950	10.71
Mar. 2	8.57	Nov. 15	7.28	Feb. 15, 1951	9.72
Apr. 1	8.05	Feb. 12, 1941	8.12		
May 7	7.5	May 14	7.42		

E-63. Lat. 31°22', long. 103°32'. Depth 360 feet.

Mar. 3, 1948	22.80	Feb. 28, 1950	43.02	Jan. 23, 1954	98.3
Feb. 5, 1949	30.35	Feb. 13, 1951	53.38		
Jan. 24, 1950	42.72	Jan. 30, 1952	83.77		

E-64. Lat. 31°22', long. 103°32'. Depth 380 feet.

Apr. 6, 1931	25.75	Nov. 16, 1939	26.57	Aug. 20, 1942	28.42
May 6	25.25	Feb. 5, 1940	25.41	Dec. 30	25.48
Oct. 26	25.10	Mar. 11	27.23	Nov. 4, 1946	27.96
Dec. 31	23.77	Sept. 12	30.02	Dec. 14	26.87
Feb. 2, 1932	23.67	Feb. 12, 1941	25.73	Jan. 27, 1947	26.94
Mar. 1	23.61	May 14	27.14	Mar. 3, 1948	25.87
Apr. 1	23.67	Oct. 22	25.70	Feb. 5, 1949	31.34
May 22	23.87	Feb. 23, 1942	24.10	Feb. 28, 1950	39.72
June 1	23.65	Mar. 12	25.06	Feb. 13, 1951	51.46

E-70. Lat. 32°24', long. 103°33'. Depth 185 feet, casing slotted below 165 feet.

Aug. 8, 1940	39.30	Feb. 13, 1941	32.92	Jan. 28, 1947	33.68
Sept. 16	37.85	June 19	27.32	Mar. 3, 1948	38.64
Nov. 14	33.38	Dec. 2, 1946	34.14	Feb. 5, 1949	46.42

E-72. Lat. 31°23', long. 103°33'. Depth 212 feet.

Nov. 16, 1939	32.2	Nov. 14, 1940	32.78	Dec. 2, 1946	36.08
Feb. 3, 1940	31.83	Feb. 14, 1941	31.91	Jan. 28, 1947	34.35
Apr. 17	38.1	May 10	39.29		

REEVES COUNTY

E-73. Lat. 31°24', long. 103°33'. Depth 220 feet.

Date	Water level	Date	Water level	Date	Water level
Apr. 16, 1947	48.22	Feb. 27, 1950	61.72	Jan. 19, 1952	105.43
Feb. 16, 1949	46.71	Mar. 14	73.70		
Jan. 13, 1950	62.20	Feb. 12, 1951	69.86		

E-75. Lat. 31°24', long. 103°24'. Depth 225 feet, casing slotted below 109 feet.

Apr. 11, 1947	38.55	Mar. 13, 1950	78.30	Feb. 5, 1953	146.21
Feb. 17, 1949	59.43	Oct. 3	107.30	Jan. 22, 1954	167.14
Jan. 13, 1950	74.61	Feb. 8, 1951	87.29		
Feb. 27	68.32	Jan. 29, 1952	119.68		

E-78. Lat. 31°25', long. 103°35'. Depth 215 feet.

Apr. 11, 1947	44.90	Jan. 13, 1950	80.69	Feb. 8, 1951	87.01
Mar. 3, 1948	53.99	Feb. 27	78.85	Jan. 28, 1952	127.25
Feb. 5, 1949	65.95	Mar. 13	80.75	Feb. 5, 1953	155.57
Oct. 17	90.0	Oct. 3	96.8		

E-80. Lat. 31°25', long. 103°34'. Depth 217 feet, screen below 197 feet.

Sept. 15, 1930	34.58	Feb. 2, 1932	31.20	Feb. 3, 1941	37.18
Dec. 18	34.66	Mar. 1	31.19	Nov. 5, 1946	39.26
Mar. 4, 1931	34.97	Apr. 1	32.35	Dec. 2	39.82
Apr. 6	35.68	May 2	32.27	Jan. 28, 1947	39.03
May 6	38.44	June 1	32.25	Mar. 3, 1948	40.97
June 2	37.24	Nov. 16, 1939	37.66	Feb. 5, 1949	21.90
Aug. 5	31.35	Feb. 3, 1940	36.90		
Oct. 1	25.71	Sept. 16	41.60		
Dec. 5	29.41	Nov. 14	38.17		

E-81. Lat. 31°25', long. 103°34'. Depth 217 feet.

Nov. 5, 1945	39.93	Oct. 24, 1949	79.05	Feb. 27, 1950	66.38
Feb. 17, 1949	53.28	Jan. 13, 1950	66.64	Feb. 8, 1951	87.56

## REEVES COUNTY

E-83. Lat. 31°25', long. 103°33'. Depth 332 feet.

Date	Water level	Date	Water level	Date	Water level
Nov. 15, 1939	23.29	May 10, 1941	26.6	Jan. 13, 1950	53.33
Feb. 3, 1940	23.1	Nov. 5, 1946	31.07	Feb. 27	54.64
Aug. 8	24.45	Dec. 2	29.80	Feb. 8, 1951	64.92
Sept. 16	24.13	Jan. 28, 1947	29.69	Jan. 29, 1952	92.40
Nov. 14	22.44	Mar. 3, 1948	33.02	Feb. 5, 1953	116.15
Feb. 13, 1941	23.34	Feb. 5, 1949	40.58		

E-87. Lat. 31°27', long. 103°34'. Depth 162 feet.

Dec. 18, 1930	33.40	Mar. 1, 1932	33.55	Mar. 2, 1942	32.01
Mar. 4, 1931	33.26	Apr. 1	33.75	Dec. 30	33.61
Apr. 6	33.42	May 2	33.95	Nov. 5, 1946	34.21
May 6	33.17	Nov. 16, 1939	35.95	Dec. 2	35.04
June 2	33.91	Feb. 3, 1940	35.41	Jan. 28, 1947	34.98
July 2	33.70	Apr. 16	35.92	Mar. 3, 1948	35.27
Aug. 5	33.60	Aug. 8	37.38	Feb. 5, 1949	33.97
Sept. 3	33.99	Nov. 14	36.33	Feb. 21, 1950	34.94
Oct. 27	33.72	Feb. 13, 1941	36.39	Feb. 15, 1951	36.15
Dec. 5	33.20	Oct. 22	32.95		
Feb. 2, 1932	33.64	Dec. 16	31.73		

E-93. Lat. 31°27', long. 103°36'. Depth 320 feet.

Feb. 12, 1941	71.0	Jan. 28, 1947	71.67	Feb. 5, 1953	140.20
May 10	70.0	Mar. 3, 1948	73.55	Jan. 22, 1954	147.74
Nov. 6, 1946	75.58	Feb. 5, 1949	84.34		
Dec. 2	72.55	Feb. 8, 1951	101.59		

E-96. Lat. 31°25', long. 103°38'. Depth 285 feet, casing slotted below 136 feet.

Apr. 30, 1947	109.44	Jan. 14, 1950	135.52	Jan. 29, 1952	165.08
Mar. 8, 1948	118.02	Feb. 27	131.56	Feb. 5, 1953	182.16
Feb. 9, 1949	127.01	Feb. 7, 1951	147.15	Jan. 22, 1954	174.26



REEVES COUNTY

E-97. Lat. 31°22', long. 103°37'. Depth 153 feet.

Date	Water level	Date	Water level	Date	Water level
Nov. 16, 1939	93.95	Sept. 12, 1940	96.46	Feb. 23, 1942	92.71
Feb. 26, 1940	93.48	Nov. 21	94.60	Mar. 2	93.88
Apr. 17	94.10	Feb. 14, 1941	93.12	Aug. 20	95.32
May 16	94.33	May 10	94.65	Dec. 30	94.24
Aug. 8	95.06	Dec. 16	93.97		

E-99. Lat. 31°20', long. 103°37'. Depth 208 feet.

Dec. 14, 1946	122.25	Feb. 5, 1949	129.93	Mar. 10, 1950	141.65
Feb. 3, 1947	117.83	Nov. 3	166.00	Feb. 9, 1951	153.15
Mar. 8, 1948	118.61	Jan. 16, 1950	143.07		

E-100. Lat. 31°20', long. 103°37'. Depth 190 feet, casing slotted.

Apr. 28, 1947	119.18	July 21, 1949	137.11	Mar. 10, 1950	139.40
Feb. 21, 1949	137.11	Nov. 3	144.40	Feb. 5, 1953	185.07

E-102. Lat. 31°23', long. 103°36'.

Dec. 21, 1939	71.48	Jan. 16, 1950	108.54	Feb. 12, 1951	120.66
Feb. 5, 1949	90.34	Feb. 28	105.18	Jan. 30, 1952	152.4

E-103. Lat. 31°23', long. 103°34'. Depth 226 feet.

Oct. 2, 1939	*52.93	Jan. 31, 1941	*50.49	Mar. 9, 1942	*50.27
Nov. 16	*50.75	Feb. 12	*50.30	Apr. 9	*51.35
Jan. 31, 1940	*49.85	Mar. 2	*50.55	May 27	*51.73
Feb. 5	*50.06	Apr. 29	*51.50	June 8	*52.01
Mar. 1	*51.45	May 31	*50.82	July 6	*52.55
Apr. 6	*51.37	June 1	*50.75	Aug. 20	52.97
May 11	*52.20	July 31	*52.48	Sept. 26	52.21
June 30	*53.25	Aug. 3	*52.35	Oct. 23	51.84
July 1	*53.35	Sept. 30	*50.98	Dec. 30	50.58
Aug. 8	*53.34	Oct. 30	*50.50	Feb. 5, 1949	59.36
Sept. 30	*53.45	Nov. 22	*50.36	Jan. 16, 1950	64.75
Oct. 20	*51.63	Dec. 24	*50.12	Feb. 28	63.87
Nov. 26	*51.07	Jan. 25, 1942	*49.90		
Dec. 31	*50.74	Feb. 28	*50.15		

\*Monthly highest water level from recorder graph.

REEVES COUNTY

E-104. Lat. 31°20', Long. 103°31'. Depth 96 feet, dug well.

Date	Water level	Date	Water level	Date	Water level
Jan. 13, 1940	19.99	Sept. 14, 1940	21.5	Mar. 2, 1949	28.75
Apr. 15	20.25	Nov. 15	20.58	Jan. 13, 1950	40.54
May 20	20.72	Feb. 12, 1941	20.10	Jan. 22	39.95
June 27	21.38	May 14	19.97	Mar. 5	39.08
Aug. 19	21.59	Jan. 4, 1949	32.15		

E-113. Lat. 31°23', long. 103°28'. Depth 220 feet.

Jan. 12, 1940	5.20	Mar. 16, 1941	5.23	July 10, 1949	7.76
Feb. 19	5.84	May 13	4.75	Sept. 4	8.33
Mar. 5	6.75	Oct. 22	4.52	Oct. 17	8.75
Apr. 10	5.49	Mar. 3, 1942	3.98	Jan. 22, 1950	9.16
May 7	6.33	May 22	3.94	Mar. 20	9.20
July 20	5.89	June 4	3.86	Sept. 23	9.93
Sept. 10	5.70	Aug. 20	4.04	Feb. 18, 1951	10.27
Oct. 5	5.70	Dec. 30	4.64	Jan. 29, 1952	12.58
Nov. 22	5.30	Feb. 25, 1949	7.70	Feb. 7, 1953	13.71
Feb. 15, 1941	5.28	June 6	7.58	Jan. 21, 1954	16.90

E-116. Lat. 31°23', long. 103°23'. Depth 39 feet, dug well.

Oct. 10, 1939	34.4	Feb. 16, 1941	35.84	Mar. 20, 1950	36.44
Dec. 7	35.7	June 13, 1949	36.20	Mar. 27, 1951	36.87
Apr. 19, 1940	35.34	Jan. 22, 1950	36.91		

E-120. Lat. 31°20', long. 103°20'. Depth 125 feet.

Mar. 5, 1940	75.90	Jan. 12, 1950	75.34	Jan. 28, 1952	75.95
Feb. 10, 1949	75.11	Mar. 20	75.32	Feb. 7, 1953	77.85
June 16	75.30	Mar. 24, 1951	75.89	Jan. 21, 1954	80.63

E-144. Lat. 31°23', long. 103°37'. Depth 620 feet.

Feb. 18, 1949	64.51	Feb. 21, 1950	73.54	Feb. 5, 1953	97.50
Oct. 17	76.45	Oct. 5	78.80	Jan. 22, 1954	101.40
Jan. 13, 1950	76.45	Feb. 8, 1951	73.41		

## REEVES COUNTY

E-163. Lat. 31°24', long. 103°37'. Depth 400 feet.

Date	Water level	Date	Water level	Date	Water level
Feb. 17, 1949	120.63	Mar. 13, 1950	137.8	Feb. 5, 1953	192.03
Oct. 19	137.4	Sept. 28	160.1	Jan. 22, 1954	193.09
Jan. 14, 1950	128.39	Feb. 7, 1951	145.76		
Feb. 27	133.92	Jan. 29, 1952	169.28		

E-173. Lat. 31°24', long. 103°36'. Depth 258 feet, casing slotted below 59 feet.

Date	Water level	Date	Water level	Date	Water level
Feb. 17, 1949	93.07	Mar. 13, 1950	110.47	Feb. 5, 1953	179.33
Oct. 19	119.27	Oct. 3	142.72		
Feb. 27, 1950	106.17	Feb. 9, 1951	121.09		

E-206. Lat. 31°23', long. 103°30'.

Date	Water level	Date	Water level	Date	Water level
Jan. 13, 1949	9.61	Feb. 17, 1951	29.65	Jan. 22, 1954	105.83
Jan. 19, 1950	22.19	Jan. 30, 1952	56.39		
Feb. 28	20.53	Feb. 4, 1953	74.12		

E-214. Lat. 31°23', long. 103°32'. Depth 393 feet.

Date	Water level	Date	Water level	Date	Water level
Feb. 18, 1949	33.87	Mar. 9, 1950	49.20	Jan. 23, 1954	138.51
Oct. 21	61.65	Feb. 12, 1951	56.23		
Feb. 28, 1950	45.62	Feb. 4, 1953	111.14		

E-227. Lat. 31°21', long. 103°34'. Depth 330 feet.

Date	Water level	Date	Water level	Date	Water level
Feb. 21, 1949	65.05	Feb. 28, 1950	72.52	Feb. 5, 1953	70.00
Nov. 2	77.45	Feb. 12, 1951	77.44	Jan. 23, 1954	56.61
Jan. 16, 1950	74.36	Jan. 30, 1952	76.55		

E-235. Lat. 31°23', long. 103°25'. Depth 340 feet.

Date	Water level	Date	Water level	Date	Water level
Feb. 16, 1949	90.04	Jan. 30, 1952	159.99	Jan. 23, 1954	216.68

REEVES COUNTY

E-244. Lat. 31°22', long. 103°38'. Depth 330 feet, casing slotted below 80 feet.

Date	Water level	Date	Water level	Date	Water level
Feb. 21, 1949	121.80	Feb. 15, 1951	143.97	Feb. 5, 1953	190.94
Feb. 28, 1950	129.86	Jan. 30, 1952	170.56	Jan. 23, 1954	214.53

E-249. Lat. 31°20', long. 103°38'. Depth 263 feet, casing slotted below 150 feet.

Feb. 21, 1949	142.86	Feb. 9, 1951	148.08	Feb. 5, 1953	197.71
Feb. 28, 1950	138.41	Jan. 30, 1952	173.07	Jan. 23, 1954	224.58

E-250. Lat. 31°20', long. 103°38'. Depth 1,210<sup>+</sup> feet, casing slotted below 970 feet.

Feb. 5, 1949	119.97	Mar. 10, 1950	117.7	Feb. 9, 1951	127.20
Nov. 3	118.8	June 14	137.71	Feb. 30, 1952	175.66
Jan. 16, 1950	118.43	Aug. 24	135.66		

E-266. Lat. 31°21', long. 103°35'. Depth 351 feet.

Feb. 21, 1949	91.75	Feb. 28, 1950	94.10	Feb. 5, 1953	167.66
Jan. 16, 1950	97.44	Jan. 30, 1952	139.89	Jan. 23, 1954	203.21

E-280. Lat. 31°21', long. 103°34'.

Feb. 5, 1949	56.40	Feb. 22, 1950	68.38	Feb. 5, 1953	137.98
Jan. 16, 1950	71.65	Jan. 30, 1952	109.93	Jan. 23, 1954	167.70

E-303. Lat. 31°20', long. 103°35'. Depth 330 feet, casing slotted below 30 feet.

Feb. 23, 1949	86.05	Feb. 10, 1951	106.74	Jan. 30, 1952	142.55
Feb. 28, 1950	96.48				

-19-  
REEVES COUNTY

H-16. Lat. 31°18', long. 103°47'. Depth 813 feet.

Date	Water level	Date	Water level	Date	Water level
Feb. 13, 1940	+51.7	Apr. 28, 1947	+44.5	Mar. 4, 1950	+84.3
May 16	+57.8	Mar. 9, 1948	+41.5	July 16	+51.3
Oct. 21	+93.5	Feb. 4, 1949	+74.1	Aug. 20	+40.0
Oct. 22, 1941	+83.5	Mar. 5	+81.3		

H-20. Lat. 31°19', long. 103°41'.

Oct. 12, 1948	123.09	Oct. 16, 1949	131.30	Sept. 17, 1950	140.29
May 26, 1949	126.00	Jan. 9, 1950	132.43	Oct. 25	141.05
June 30	126.87	Feb. 28	132.95	Nov. 21	141.48
Aug. 6	128.33	Mar. 16	133.14	Feb. 16, 1951	142.40
Sept. 1	129.60	Aug. 20	139.16		

H-35. Lat. 31°08', long. 103°45'. Depth 43 feet.

July 31, 1940	21.8	Aug. 6, 1949	21.28	July 25, 1950	22.46
Sept. 25	17.9	Sept. 2	19.43	Aug. 20	23.15
Oct. 10, 1948	21.25	Jan. 9, 1950	21.89	Oct. 25	20.59
Feb. 4, 1949	21.85	Mar. 16	20.94	Nov. 21	22.97
July 1	21.43	June 19	21.05		

H-36. Lat. 31°07', long. 103°42'.

Oct. 11, 1948	146.60	Mar. 16, 1950	150.47	Jan. 28, 1952	159.94
Jan. 20, 1950	149.93	Feb. 15, 1951	153.16	Feb. 6, 1953	177.17

H-37. Lat. 31°05', long. 103°41'. Depth 158 feet.

July 30, 1940	140.53	Aug. 5, 1949	137.16	Aug. 20, 1950	140.84
Sept. 25	138.0	Sept. 2	137.52	Oct. 25	141.30
Oct. 10, 1948	134.99	Jan. 9, 1950	138.41	Nov. 21	141.48
Feb. 4, 1949	135.70	June 19	139.95	Feb. 15, 1951	141.64
July 1	136.70	July 16	140.38		

-20-  
REEVES COUNTY

H-46. Lat. 31°18', long. 103°46'. Depth 37 feet.

Date	Water level	Date	Water level	Date	Water level
Oct. 12, 1948	16.99	Jan. 9, 1950	17.84	Oct. 25, 1950	11.29
May 26, 1949	20.37	Mar. 3	17.05	Nov. 21	11.10
July 1	19.95	June 19	12.35	Feb. 15, 1951	10.61
Aug. 6	19.33	July 17	12.11	Jan. 28, 1952	10.21
Sept. 2	19.31	Aug. 20	11.78	Feb. 6, 1953	9.56
Oct. 16	18.60	Sept. 17	11.49	Jan. 22, 1954	17.77

H-54. Lat. 31°12', long. 103°43'.

Oct. 12, 1948	174.78	Mar. 16, 1950	180.28	Nov. 21, 1950	182.72
Feb. 4, 1949	175.57	June 19	180.17	Feb. 15, 1951	183.94
July 1	176.45	July 16	180.68	Jan. 28, 1952	202.21
Aug. 6	175.90	Aug. 20	181.30	Feb. 6, 1953	225.09
Jan. 9, 1950	178.35	Oct. 25	182.48		

H-61. Lat. 31°07', long. 103°40'.

Aug. 25, 1948	194.84	Mar. 16, 1950	197.98	Feb. 6, 1953	232.44
Jan. 20, 1950	197.41	Feb. 15, 1951	201.23	Jan. 22, 1954	260.23

H-62. Lat. 31°02', long. 103°42'. Depth 226 feet.

Aug. 25, 1948	105.90	Aug. 6, 1949	101.48	Mar. 16, 1950	109.87
Feb. 4, 1949	106.27	Sept. 2	101.36	Feb. 15, 1951	103.75
July 1	102.72	Jan. 9, 1950	102.54		

H-68. Lat. 31°02', long. 103°40'. Depth 223 feet.

Dec. 15, 1948	103.71	Mar. 16, 1950	112.09	Feb. 18, 1951	109.87
Feb. 4, 1949	103.66	June 19	109.01	Jan. 28, 1952	115.52
July 1	105.10	July 16	109.80	Feb. 6, 1953	132.10
Aug. 6	105.93	Aug. 20	110.18	Jan. 22, 1954	159.54
Sept. 2	106.44	Oct. 25	109.96		
Jan. 9, 1950	106.61	Nov. 20	110.18		

-21-  
REEVES COUNTY

I-2. Lat. 31°18', long. 103°38'.

Date	Water level	Date	Water level	Date	Water level
Nov. 7, 1946	98.28	Jan. 16, 1950	123.76	Jan. 23, 1954	212.22
Mar. 8, 1948	98.79	Feb. 28	121.32		
Feb. 5, 1949	110.50	Feb. 5, 1953	179.20		

I-4. Lat. 31°18', long. 103°34'. Depth 84 feet.

Feb. 26, 1940	42.55	Mar. 8, 1948	45.05	Jan. 22, 1950	71.60
Sept. 12	42.93	Feb. 5, 1949	56.24		

I-10. Lat. 31°16', long. 103°25'. Depth 180 feet.

Sept. 19, 1940	31.4	Mar. 21, 1950	32.78	Jan. 21, 1954	50.85
Jan. 24, 1947	30.75	Jan. 29, 1952	38.77		
Feb. 9, 1949	32.30	Feb. 7, 1953	42.72		

I-12. Lat. 31°15', long. 103°27'. Depth 1,200± feet.

May 20, 1940	10.2	Dec. 9, 1948	11.15	Mar. 28, 1951	14.3
Nov. 22	8.4	Jan. 13, 1950	13.11		

I-14. Lat. 31°18', long. 103°28'. Depth 103 feet.

Mar. 1, 1940	25.95	Apr. 2, 1941	26.25	Feb. 7, 1949	30.81		
May 20	25.97	May 13	25.98			Jan. 13, 1950	35.07
June 27	26.20	Dec. 16	24.57			Mar. 5	33.57
Aug. 21	26.20	Mar. 3, 1942	25.87			Feb. 18, 1951	37.06
Sept. 4	26.27	May 14	26.01			Jan. 29, 1952	48.34
Nov. 22	24.89	Sept. 16	26.68			Jan. 21, 1954	69.34
Feb. 14, 1941	26.69	Dec. 30	26.88				
Mar. 1	26.52	Jan. 4, 1949	31.77				

I-15. Lat. 31°17', long. 103°29'. Depth 212 feet.

Jan. 13, 1940	15.31	Aug. 21, 1940	20.03	Apr. 2, 1941	15.05		
Mar. 1	17.65	Nov. 22	15.4			Dec. 7, 1948	22.89
May 20	19.64	Feb. 14, 1941	13.39			Jan. 13, 1950	28.20

REEVES COUNTY

I-18. Lat. 31°16', long. 103°31'. Depth 125 feet.

Date	Water level	Date	Water level	Date	Water level
Aug. 7, 1933	13.00	Aug. 29, 1942	11.72	Mar. 5, 1950	13.81
Jan. 13, 1940	13.47	Dec. 30	8.79	Feb. 18, 1951	16.95
Nov. 22	10.72	Mar. 9, 1948	10.29	Jan. 29, 1952	21.46
Feb. 14, 1941	9.42	Dec. 7	13.40	Feb. 7, 1953	26.71
May 16	9.18	Feb. 7, 1949	12.16	Jan. 22, 1954	34.62
Mar. 3, 1942	7.11	Jan. 13, 1950	14.55		

I-21. Lat. 31°15', long. 103°33'. Depth 195 feet.

Dec. 8, 1930	14.72	Mar. 3, 1948	14.25	Feb. 27, 1950	19.65
Mar. 11, 1941	13.92	Dec. 10	17.44	Feb. 13, 1951	21.95
Nov. 8, 1946	14.40	Feb. 7, 1949	16.32	Jan. 20, 1952	27.26
Dec. 3	15.61	Mar. 2	16.87	Jan. 22, 1954	38.74
Jan. 27, 1947	13.88	Jan. 13, 1950	19.25		

I-22. Lat. 31°15', long. 103°32'. Depth 150 feet, casing slotted below 73 feet.

Apr. 25, 1947	20.92	Jan. 22, 1950	18.92	Feb. 5, 1953	46.95
Dec. 15, 1948	17.40	Feb. 27	22.10	Jan. 23, 1954	46.60
Mar. 1, 1949	16.38	Feb. 13, 1951	21.51		

I-25. Lat. 31°14', long. 103°33'. Depth 152 feet.

Dec. 18, 1930	17.7	Apr. 15, 1940	17.0	Jan. 13, 1950	22.69
Mar. 4, 1931	17.3	Aug. 19	18.6	Feb. 27	23.20
May 6	16.7	Nov. 15	16.6	Feb. 13, 1951	24.93
Aug. 5	19.9	Nov. 12, 1946	18.2	Jan. 30, 1952	33.79
Oct. 27	18.7	Dec. 3	20.1	Feb. 5, 1953	44.92
Dec. 31	17.7	Jan. 27, 1947	17.3	Jan. 22, 1954	49.47
Feb. 2, 1932	17.6	Mar. 8, 1948	19.4		
Mar. 1	18.3	Dec. 15	18.45		
Mar. 11, 1940	16.9	Feb. 7, 1949	20.41		



I-27. Lat. 31°14', long. 103°34'. Depth 137 feet, casing slotted below 59 feet.

Date	Water level	Date	Water level	Date	Water level
Sept. 12, 1940	23.36	Feb. 7, 1949	23.42	Jan. 30, 1952	35.56
Feb. 12, 1941	17.25	Jan. 17, 1950	26.49	Feb. 6, 1953	44.22
Nov. 8, 1946	19.52	Feb. 27	25.75	Jan. 23, 1954	52.55
Mar. 3, 1948	19.11	Feb. 13, 1951	28.11		

I-31. Lat. 31°14', long. 103°35'. Depth 142 feet.

Nov. 12, 1946	29.37	Mar. 3, 1948	29.74	Mar. 1, 1950	38.41
Dec. 3	29.17	Feb. 7, 1949	35.27		
Jan. 27, 1947	28.57	Jan. 17, 1950	40.91		

I-33. Lat. 31°16', long. 103°39'.

Oct. 3, 1939	65.92	Mar. 8, 1948	66.70	Jan. 30, 1952	133.63
Apr. 16, 1940	65.5	Feb. 7, 1949	73.04	Feb. 6, 1953	151.44
May 31	65.49	Jan. 17, 1950	83.88	Jan. 23, 1954	181.65
Nov. 22	66.02	Mar. 1	84.06		
May 14, 1941	66.64	Feb. 10, 1951	100.09		

I-39. Lat. 31°08', long. 103°38'. Depth 214 feet.

Mar. 10, 1948	42.84	Mar. 5, 1950	50.21	Feb. 18, 1951	47.56
Mar. 2, 1949	44.80				

I-40. Lat. 31°01', long. 103°19'.

Aug. 19, 1940	137.57	Mar. 21, 1950	138.83	Feb. 6, 1953	158.26
Nov. 12, 1948	136.21	Mar. 27, 1951	138.83	Jan. 21, 1954	183.63
Jan. 10, 1950	138.65	Jan. 28, 1952	145.98		

I-42. Lat. 31°08', long. 103°38'. Depth 187 feet.

July 30, 1940	60.14	Feb. 7, 1949	60.99	Mar. 5, 1950	62.97
Oct. 12	60.99	Mar. 2	60.83	Feb. 18, 1951	63.34
Mar. 10, 1948	59.82	Jan. 17, 1950	63.34	Jan. 28, 1952	66.85

-24-  
REEVES COUNTY

I-43. Lat. 31°07', long. 103°36'. Depth 220 feet.

Date	Water level	Date	Water level	Date	Water level
Nov. 5, 1930	26.34	Oct. 26, 1931	25.77	Dec. 5, 1941	21.31
Dec. 18	26.19	Dec. 31	25.54	Mar. 2, 1942	19.11
Mar. 4, 1931	26.09	Feb. 2, 1932	25.62	Aug. 24	19.64
Apr. 6	26.15	Mar. 1	25.43	Dec. 30	19.30
May 6	26.20	Apr. 1	25.88	Feb. 7, 1949	36.31
June 8	26.04	May 2	25.83	Mar. 2	40.89
July 2	25.87	June 1	25.85	Jan. 17, 1950	39.73
Aug. 5	26.00	Mar. 2, 1941	24.79		
Sept. 3	25.93	May 15	20.98		

I-46. Lat. 31°11', long. 103°34'. Depth 210 feet.

Apr. 15, 1940	33.14	Jan. 27, 1947	19.91	Feb. 17, 1951	26.12
Nov. 15	19.17	Mar. 3, 1948	22.13	Jan. 28, 1952	34.32
Feb. 12, 1941	17.93	Feb. 7, 1949	22.89	Feb. 7, 1953	47.27
Nov. 12, 1946	22.51	Mar. 2	23.63	Jan. 21, 1954	66.07
Dec. 3	22.26	Feb. 22, 1950	24.36		

I-50. Lat. 31°13', long. 103°32'. Depth 400 feet.

Feb. 19, 1940	8.59	Nov. 12, 1946	9.18	Jan. 13, 1950	17.42
Nov. 22	8.27	Dec. 9, 1948	15.15	Mar. 5	16.47
Feb. 12, 1941	7.42	Mar. 2, 1949	12.87	Feb. 13, 1951	19.09

I-51. Lat. 31°12', long. 101°31'. Depth 60 feet.

Aug. 7, 1933	15.5	Mar. 9, 1948	17.83	Mar. 5, 1950	21.22
Feb. 19, 1940	17.73	Dec. 9	20.55	Jan. 28, 1952	32.92
Sept. 25	18.79	Feb. 7, 1949	19.87		
May 15, 1941	17.05	Jan. 13, 1950	21.83		

I-52. Lat. 31°10', long. 103°31'. Depth 319 feet.

Nov. 13, 1946	16.90	Feb. 22, 1950	27.14	Feb. 7, 1953	54.53
Dec. 9, 1948	28.60	Feb. 17, 1951	28.58	Jan. 21, 1954	71.97
Feb. 7, 1949	26.75	Jan. 28, 1952	41.12		

I-54. Lat. 31°13', Long: 103°22'. Depth 83 feet.

Date	Water level	Date	Water level	Date	Water level
Jan. 17, 1940	59.47	Oct. 31, 1941	58.52	Jan. 29, 1952	59.32
May 31	59.57	Mar. 28, 1942	59.11	Feb. 7, 1953	59.64
Sept. 4	59.56	Feb. 7, 1949	59.30	Jan. 21, 1954	59.44
Mar. 1, 1941	59.19	Jan. 11, 1950	59.20		
May 13	59.35	Mar. 21	59.34		

I-73. Lat. 31°05', long. 103°28'.

Aug. 20, 1940	60.78	Jan. 11, 1950	58.22	Jan. 28, 1952	61.94
Dec. 9, 1948	57.48	Feb. 26	58.13	Feb. 7, 1953	66.09
Feb. 7, 1949	58.55	Feb. 17, 1951	58.86	Jan. 21, 1954	83.41

I-81. Lat. 31°03', long. 103°37'. Depth 200 feet.

Mar. 11, 1940	77.85	Feb. 7, 1949	76.94	Oct. 25, 1950	81.01
Apr. 15	78.10	July 1	77.95	Nov. 21	81.63
July 31	78.75	Aug. 5	78.23	Feb. 18, 1951	81.28
Sept. 7	78.79	Sept. 2	78.41	Jan. 28, 1952	85.36
Mar. 1, 1941	76.99	Jan. 9, 1950	78.21	Feb. 6, 1953	95.40
May 15	76.25	Mar. 21	79.57	Jan. 21, 1954	105.61
Dec. 5	75.82	July 16	80.84		
Nov. 9, 1948	76.40	Aug. 16	81.02		

I-83. Lat. 31°02', long. 103°38'. Depth 142 feet.

Apr. 18, 1940	125.48	Mar. 2, 1941	121.49	Jan. 9, 1950	127.54
May 27	126.12	May 15	121.87	Feb. 15, 1951	130.57
July 30	126.44	Nov. 12, 1948	124.03		
Aug. 19	126.27	Feb. 7, 1949	125.07		

I-86. Lat. 31°00', long. 103°37'. Depth 200 feet, casing slotted below 119 feet.

Jan. 27, 1947	106.83	Jan. 9, 1950	116.72	Jan. 28, 1952	124.80
Nov. 10, 1948	114.27	Mar. 21	117.05	Feb. 6, 1953	136.26
Feb. 9, 1949	113.99	Mar. 26, 1951	118.11	Jan. 21, 1954	151.80

-26-  
REEVES COUNTY

I-87. Lat. 31°02', long. 103°33'. Depth 119 feet.

Date	Water level	Date	Water level	Date	Water level
July 30, 1940	74.58	Nov. 9, 1948	72.50	Jan. 10, 1950	74.80
May 17, 1941	71.64	May 19, 1949	73.34		

I-96. Lat. 31°18', long. 103°38'. Depth 293 feet, casing slotted below 150 feet.

Jan. 30, 1952	157.61	Feb. 5, 1953	180.04	Jan. 23, 1954	220.70
---------------	--------	--------------	--------	---------------	--------

I-98. Lat. 31°19', long. 103°38'. Depth 323 feet, casing slotted below 122 feet.

Feb. 23, 1949	103.86	Feb. 10, 1951	130.22	Jan. 23, 1954	199.25
Jan. 20, 1950	118.70	Jan. 30, 1952	145.10		
Feb. 28	116.63	Feb. 5, 1953	167.19		

I-100. Lat. 31°18', long. 103°37'. Depth 307 feet, slotted below 150 feet.

Feb. 23, 1949	91.54	Feb. 28, 1950	103.83	Feb. 10, 1951	116.12
Jan. 20, 1950	104.56				

I-120. Lat. 31°19', long. 103°32'. Depth 500 feet.

Jan. 4, 1949	35.38	Jan. 16, 1950	52.80	Feb. 5, 1953	121.29
Feb. 5	38.77	Feb. 13, 1951	63.63	Jan. 23, 1954	148.07
Feb. 21	34.29	Jan. 30, 1952	92.09		

I-190a. Lat. 31°14', long. 103°36'. Depth 1,100<sup>±</sup> feet.

Jan. 30, 1952	54.20	Feb. 6, 1953	59.56	Jan. 23, 1954	62.22
---------------	-------	--------------	-------	---------------	-------

-27-  
REEVES COUNTY

I-202. Lat. 31°15', long. 103°35'. Depth 217 feet, cased to 151 feet, all slotted.

Date	Water level	Date	Water level	Date	Water level
Feb. 24, 1949	38.02	June 21, 1950	71.59	Feb. 6, 1953	49.52
Jan. 17, 1950	42.59	Feb. 13, 1951	42.30		
Feb. 24	41.04	Jun. 30, 1952	44.26		

I-235. Lat. 31°08', long. 103°37'. Depth 57 feet.

Date	Water level	Date	Water level	Date	Water level
Dec. 9, 1948	29.86	Jan. 13, 1950	30.77	Feb. 18, 1951	32.87
May 17, 1949	29.80	Mar. 5	31.67		

I-258. Lat. 31°18', long. 103°36'. Depth 1,015 feet, casing slotted below 200 feet.

Date	Water level	Date	Water level	Date	Water level
Feb. 10, 1951	63.22	Feb. 6, 1953	109.68	Jan. 23, 1954	147.24
Jan. 30, 1952	83.97				

I-260. Lat. 31°13', long. 103°37'. Depth 438 feet, casing slotted below 100 feet.

Date	Water level	Date	Water level	Date	Water level
Feb. 7, 1949	32.77	Feb. 10, 1951	63.66	Jan. 23, 1954	145.80
Jan. 17, 1950	46.90	Jan. 30, 1952	82.86		
Mar. 1	51.23	Feb. 6, 1953	108.72		

I-266. Lat. 31°12', long. 103°37'. Depth 357 feet, casing slotted below 165 feet.

Date	Water level	Date	Water level	Date	Water level
Mar. 1, 1949	32.58	Feb. 10, 1951	58.62	Jan. 23, 1954	128.83
Jan. 17, 1950	46.87	Jan. 30, 1952	75.36		
Mar. 1	45.92	Feb. 6, 1953	100.08		

I-283. Lat. 31°12', long. 103°39'. Depth 285 feet, casing slotted below 140 feet.

Date	Water level	Date	Water level	Date	Water level
Mar. 1, 1949	66.59	Mar. 1, 1950	87.67	Jan. 30, 1952	110.25
Jan. 17, 1950	80.12	Feb. 12, 1951	91.37	Jan. 23, 1954	164.78

-28-  
REEVES COUNTY

I-328. Lat. 31°00', Long. 103°30'. Depth 299 feet.

Date	Water level	Date	Water level	Date	Water level
Dec. 10, 1948	168.92	Feb. 26, 1950	170.47	Feb. 6, 1953	177.23
Feb. 7, 1949	168.92	Mar. 27, 1951	171.99	Jan. 21, 1954	185.77
Jan. 9, 1950	171.25	Jan. 28, 1952	174.15		

J-16. Lat. 31°09', long. 103°16'. Depth 81 feet.

Jan. 10, 1940	75.08	Oct. 31, 1941	73.20	Jan. 22, 1950	67.59
Sept. 5	73.07	Mar. 28, 1942	71.08	Jan. 28, 1952	68.34
Mar. 1, 1941	74.34	Aug. 29	71.06	Feb. 7, 1953	70.50
Apr. 2	74.60	Feb. 10, 1949	69.02	Jan. 21, 1954	69.54

K-16. Lat. 30°59', long. 103°41'. Depth 95 feet.

Nov. 4, 1948	66.83	Mar. 21, 1950	69.53	Feb. 6, 1953	66.03
Feb. 4, 1949	67.04	Mar. 26, 1951	66.56	Jan. 21, 1954	69.23
Jan. 9, 1950	67.55	Jan. 28, 1952	66.95		

K-73. Lat. 30°59', long. 103°40'. Depth 197 feet.

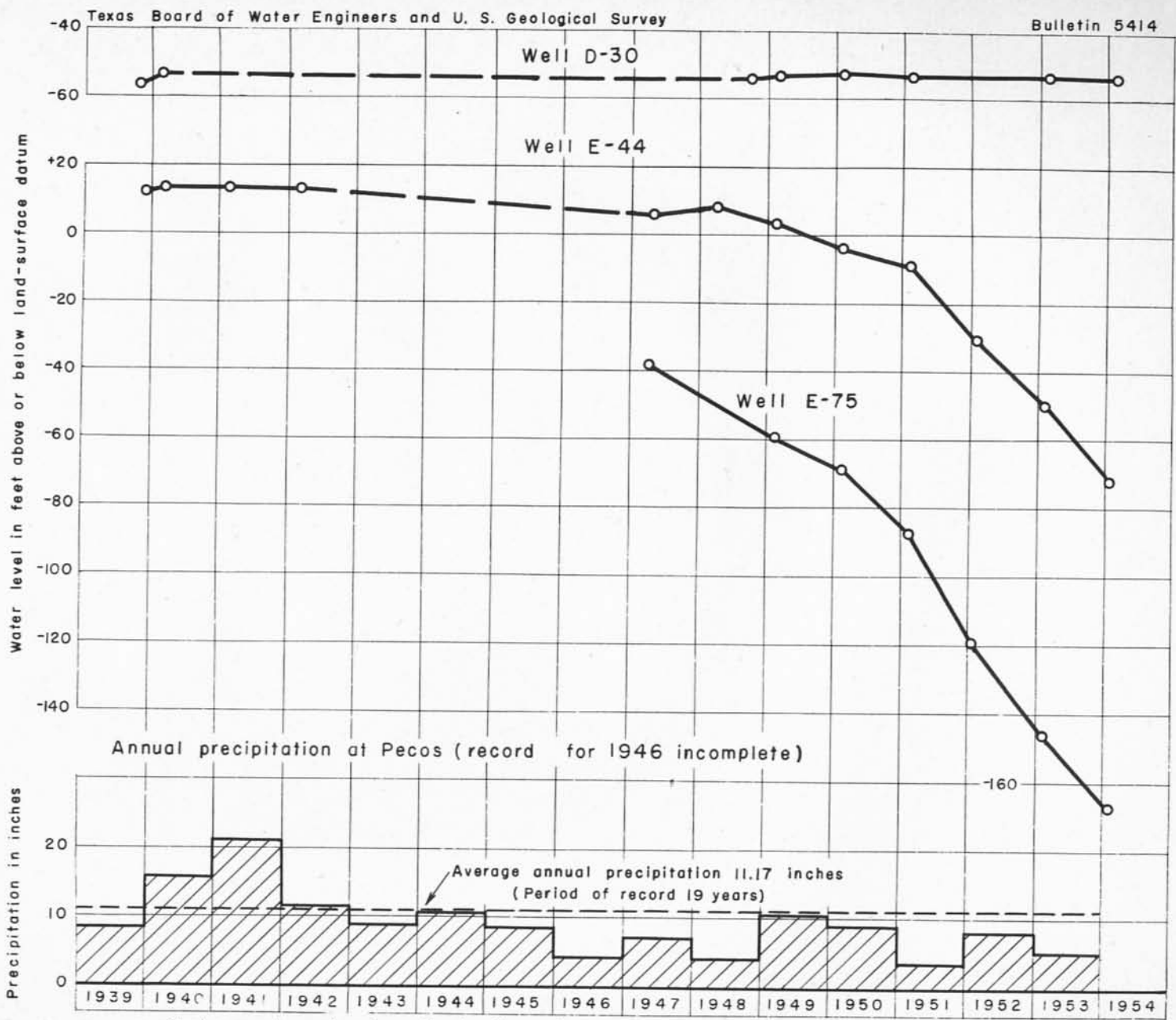
Nov. 4, 1948	174.38	Mar. 21, 1950	172.83	Feb. 6, 1953	172.90
Feb. 4, 1949	172.63	Mar. 26, 1951	172.49	Jan. 21, 1954	171.58
Jan. 9, 1950	172.53	Jan. 28, 1952	172.68		

L-8. Lat. 30°53', long. 103°32'. Depth 199 feet.

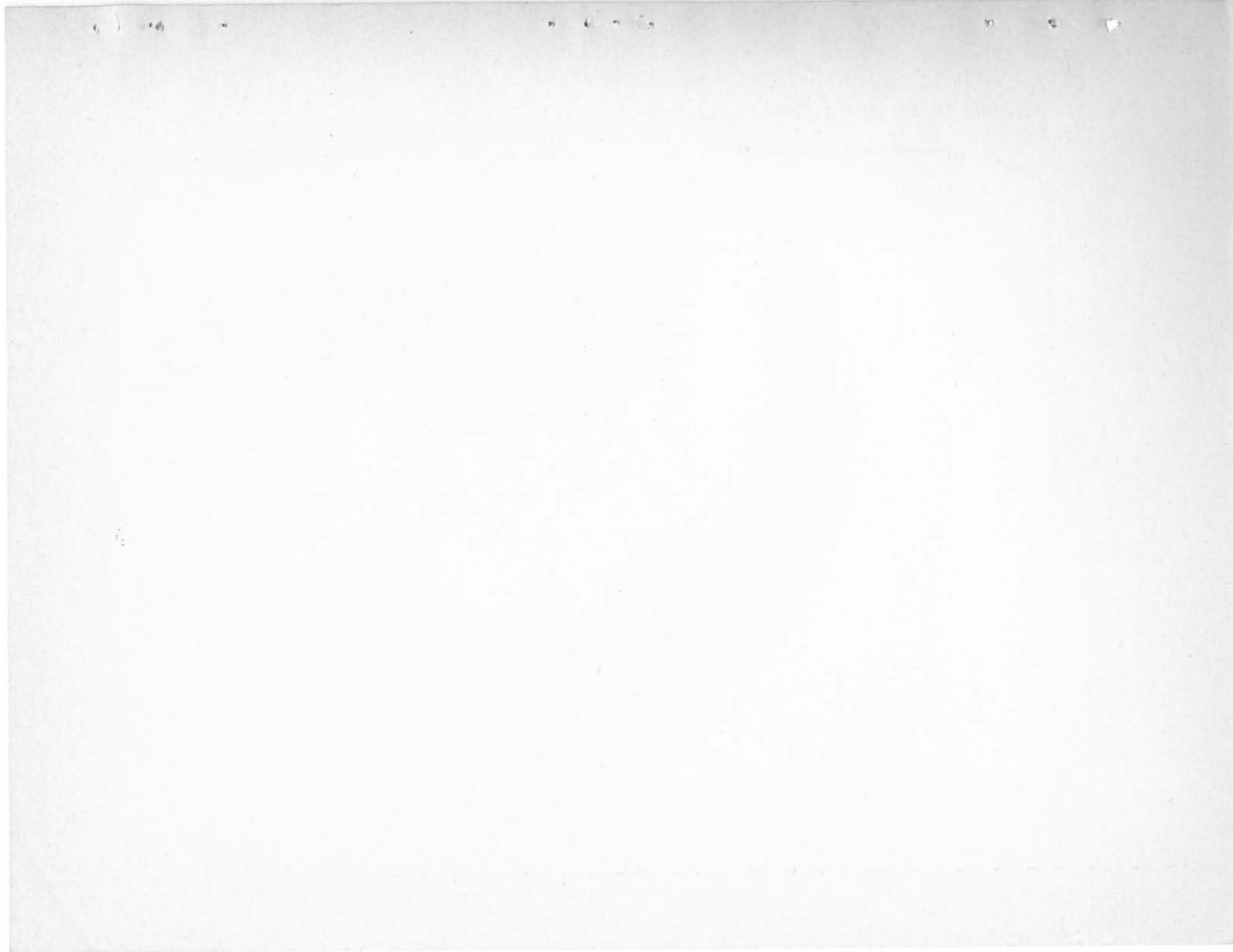
Nov. 4, 1948	167.22	Jan. 9, 1950	172.65	Mar. 26, 1951	175.89
May 20, 1949	169.66				

L-12. Lat. 30°58', long. 103°32'. Depth 99 feet.

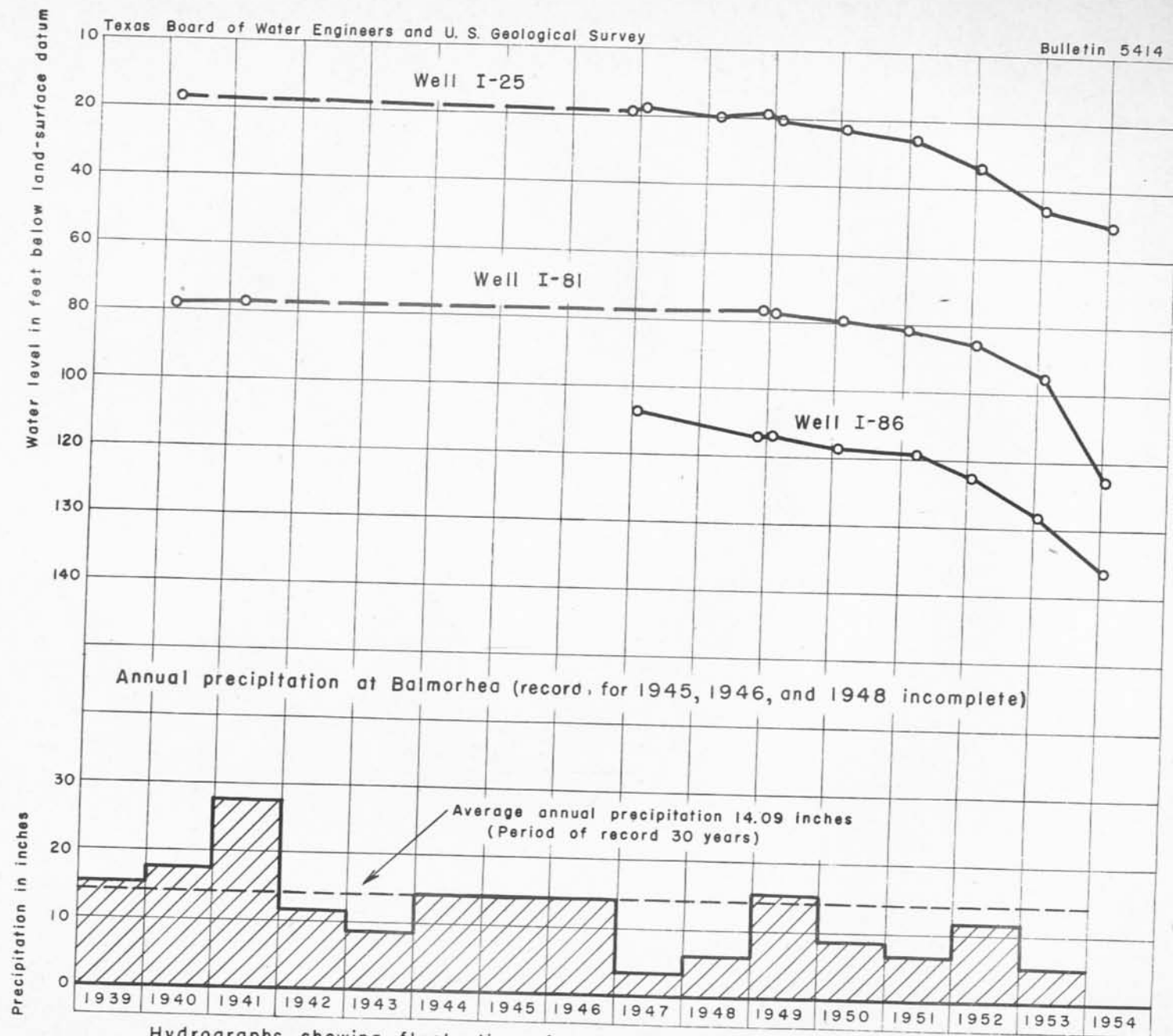
Nov. 6, 1948	89.02	Jan. 10, 1950	88.25	Jan. 21, 1954	90.83
Feb. 11, 1949	90.01	Feb. 6, 1953	79.14		



Hydrographs showing fluctuation of water levels in Reeves County wells and the annual precipitation at Pecos, Texas.







Hydrographs showing fluctuation of water levels in Reeves County wells and the annual precipitation at Balmorhea, Texas.