

TEXAS BOARD OF WATER ENGINEERS

Durwood Manford, Chairman
R. M. Dixon, Member
O. F. Dent, Member

BULLETIN 5806

RECORDS OF WATER-LEVEL MEASUREMENTS IN COLLINGSWORTH,
HEMPHILL, ROBERTS, AND WHEELER COUNTIES, TEXAS
1937 THROUGH JULY 1958

Compiled by
Frank A. Rayner, Geological Engineer
Texas Board of Water Engineers

Prepared in cooperation with the Geological Survey,
United States Department of the Interior

December 1958

C O N T E N T S

	Page
Introduction-----	1
Water-level measurements in Collingsworth County-----	4
Water-level measurements in Hemphill County-----	10
Water-level measurements in Roberts County-----	14
Water-level measurements in Wheeler County-----	18

ILLUSTRATIONS

Map showing location of observation wells in Collingsworth County, Texas-----	3
Hydrographs of water levels in wells, Collingsworth County, and annual precipitation at Wellington, Texas-----	7
Map showing location of observation wells in Hemphill County, Texas-----	9
Map showing location of observation wells in Roberts County, Texas-----	13
Hydrographs of water levels in wells, Roberts County, and annual precipitation at Miami, Texas-----	15
Map showing location of observation wells in Wheeler County, Texas-----	17
Hydrographs of water levels in wells, Wheeler County, and annual precipitation at Shamrock, Texas-----	23

RECORDS OF WATER-LEVEL MEASUREMENTS IN COLLINGSWORTH,
HEMPHILL, ROBERTS, AND WHEELER COUNTIES, TEXAS
1937 THROUGH JULY 1958

Compiled by
Frank A. Rayner, Geological Engineer
Texas Board of Water Engineers

December 1958

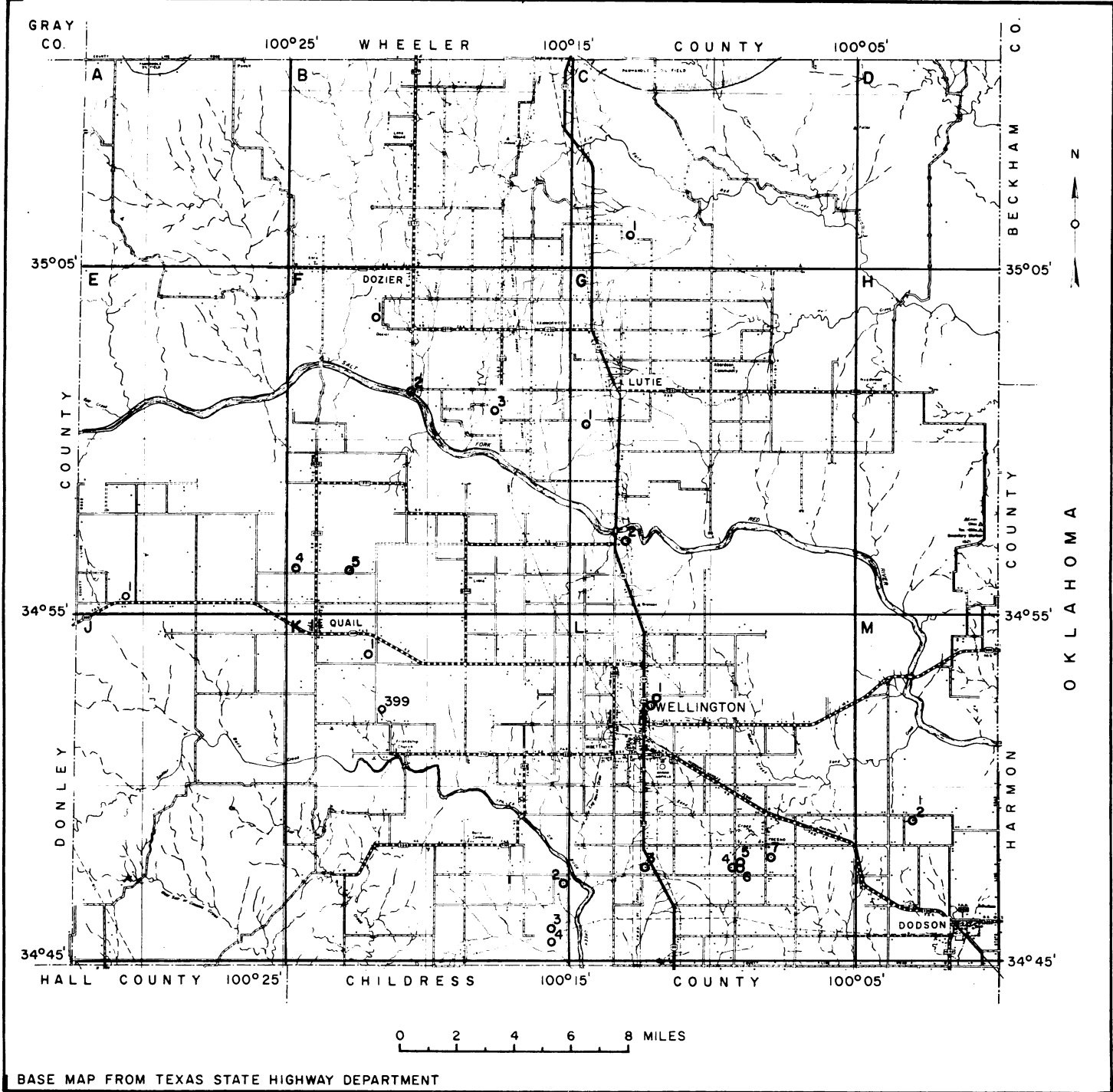
INTRODUCTION

The Texas Board of Water Engineers is charged with making, independently or in cooperation with other state and federal agencies, scientific investigations of the source, amount, and quality of ground-water supplies. To evaluate effects of ground-water development in relation to available supply, periodic measurements of water levels are made in principal reservoirs of the state through an observation well program conducted cooperatively by the Texas Board of Water Engineers and the United States Geological Survey.

This bulletin contains measurements of the depth to water in feet below land-surface datum in 23 wells in Collingsworth County, 12 wells in Hemphill County, 7 wells in Roberts County, and 36 wells in Wheeler County. The period of record covers measurements made in observation wells from 1937 through July 1958.

An observation well location map precedes each county's table of water-level measurements. Hydrographs illustrating the fluctuation of water levels in selected wells in Collingsworth, Roberts, and Wheeler Counties follow the associated table of water-level measurements. Annual precipitation charts for Wellington, Miami, and Shamrock are combined with their respective hydrographs.

COLLINGSWORTH COUNTY



OBSERVATION WELLS IN COLLINGSWORTH COUNTY, TEXAS
DECEMBER 1958

WATER-LEVEL MEASUREMENTS IN COLLINGSWORTH COUNTY, TEXAS

399. Lat. $34^{\circ}52'$, long. $100^{\circ}22'$. Diameter 5 inches, depth 56 feet.

Date	Water level	Date	Water level	Date	Water level
Aug. 26, 1938	27.10	Jan. 7, 1958	22.52		

C-1. Lat. $35^{\circ}05'$, long. $100^{\circ}12'$. Diameter 8 inches, depth 80 feet, cased to 60 feet.

Jan. 13, 1956 b	68.71	Jan. 21, 1957 a	72.08	Jan. 7, 1958	60.24
-----------------	-------	-----------------	-------	--------------	-------

E-1. Lat. $34^{\circ}55'$, long. $100^{\circ}30'$. Diameter 16 inches, depth 360 feet, casing slotted from 190 to 210 and 320 to 360 feet.

Jan. 13, 1956	122.71	Jan. 21, 1957	123.06	Jan. 7, 1958	121.70
---------------	--------	---------------	--------	--------------	--------

F-1. Lat. $35^{\circ}03'$, long. $100^{\circ}22'$.

Jan. 21, 1957	60.46	Jan. 7, 1958	60.01		
---------------	-------	--------------	-------	--	--

F-2. Lat. $35^{\circ}01'$, long. $100^{\circ}20'$. Diameter 14 inches, depth 53 feet.

Jan. 13, 1956	26.86	Jan. 21, 1957	27.46	Jan. 7, 1958	26.77
---------------	-------	---------------	-------	--------------	-------

F-3. Lat. $35^{\circ}00'$, long. $100^{\circ}17'$. Diameter 8 inches, depth 198 feet, cased to 60 feet.

Jan. 13, 1956	91.80	Jan. 21, 1957	92.23	Jan. 7, 1958	92.63
---------------	-------	---------------	-------	--------------	-------

F-4. Lat. $34^{\circ}56'$, long. $100^{\circ}24'$. Diameter 13 inches, depth 123 feet, casing slotted from 86 to 123 feet.

Jan. 13, 1956	48.06	Jan. 21, 1957	47.02	Jan. 7, 1958	46.72
---------------	-------	---------------	-------	--------------	-------

F-5. Lat. $34^{\circ}55'$, long. $100^{\circ}22'$. Diameter 12 inches, depth 196 feet, casing slotted from 136 to 196 feet.

Jan. 13, 1956	81.62	Jan. 21, 1957	80.63	Jan. 7, 1958	80.34
---------------	-------	---------------	-------	--------------	-------

WATER-LEVEL MEASUREMENTS IN COLLINGSWORTH COUNTY -- CONTINUED

G-1. Lat. $35^{\circ}00'$, long. $100^{\circ}14'$. Diameter 16 inches, depth 185 feet, cased to 15 feet.

Date	Water level	Date	Water level	Date	Water level
Jan. 13, 1956	36.47	Jan. 21, 1957	53.31	Jan. 7, 1958	50.80

G-2. Lat. $34^{\circ}57'$, long. $100^{\circ}03'$. Diameter 16 inches, depth 60 feet, casing slotted from 41 to 60 feet.

Jan. 13, 1956	25.28	Jan. 21, 1957	30.76	Jan. 7, 1958	24.00
---------------	-------	---------------	-------	--------------	-------

K-1. Lat. $34^{\circ}53'$, long. $100^{\circ}22'$.

Jan. 13, 1956	61.97	Jan. 21, 1957	60.35	Jan. 7, 1958	59.94
---------------	-------	---------------	-------	--------------	-------

K-2. Lat. $34^{\circ}47'$, long. $100^{\circ}15'$. Diameter 16 inches, depth 123 feet, casing slotted from 85 to 123 feet.

Jan. 12, 1955	53.80	Jan. 22, 1957	54.89	Jan. 7, 1958	53.98
Jan. 13, 1956	52.59				

K-3. Lat. $34^{\circ}45'$, long. $100^{\circ}15'$.

Sept. 26, 1938	68.70	Jan. 7, 1958	71.17		
----------------	-------	--------------	-------	--	--

K-4. Lat. $34^{\circ}45'$, long. $100^{\circ}15'$. Depth 174 feet.

Jan. 13, 1956	99.87	Jan. 22, 1957	103.35	Jan. 7, 1958	101.30
---------------	-------	---------------	--------	--------------	--------

L-1. Lat. $34^{\circ}52'$, long. $100^{\circ}12'$. Diameter 8 inches, depth 108 feet, casing slotted from 28 to 108 feet.

Jan. 13, 1956	26.72	Jan. 21, 1957	27.64	Jan. 7, 1958	25.86
---------------	-------	---------------	-------	--------------	-------

L-2. Lat. $34^{\circ}52'$, long. $100^{\circ}12'$. Diameter 12 inches, depth 128 feet, casing slotted from 98 to 128 feet.

Jan. 13, 1956	29.92	Jan. 21, 1957	31.63		
---------------	-------	---------------	-------	--	--

WATER-LEVEL MEASUREMENTS IN COLLINGSWORTH COUNTY -- CONTINUED

L-3. Lat. $34^{\circ}47'$, long. $100^{\circ}12'$. Diameter 16 inches, depth 238 feet, casing slotted from 188 to 238 feet.

Date	Water level	Date	Water level	Date	Water level
Jan. 11, 1954	81.40	Jan. 13, 1956	81.19	Jan. 7, 1958	81.61
Jan. 12, 1955	81.81	Jan. 22, 1957	83.24		

L-4. Lat. $34^{\circ}48'$, long. $100^{\circ}09'$. Depth 200 feet.

Jan. 13, 1956	71.46	Jan. 22, 1957	73.03	Jan. 7, 1958	72.26
---------------	-------	---------------	-------	--------------	-------

L-5. Lat. $34^{\circ}47'$, long. $100^{\circ}09'$. Diameter 14 inches, depth 127 feet, casing slotted from 97 to 127 feet.

Jan. 12, 1955	64.12	Jan. 22, 1957	71.31	Jan. 7, 1958	70.67
Jan. 13, 1956	70.04				

L-6. Lat. $34^{\circ}47'$, long. $100^{\circ}09'$. Diameter 14 inches, depth 135 feet, casing slotted from 75 to 135 feet.

Jan. 12, 1955	64.75	Jan. 22, 1957	72.32	Jan. 7, 1958	71.62
Jan. 13, 1956	70.89				

L-7. Lat. $34^{\circ}47'$, long. $100^{\circ}07'$. Diameter 14 inches, depth 210 feet, casing slotted from 140 to 210 feet.

Jan. 12, 1955	61.63	Jan. 22, 1957	70.85	Jan. 7, 1958	74.02
Jan. 13, 1956	63.80				

M-1. Lat. $34^{\circ}49'$, long. $100^{\circ}03'$. Diameter 12 inches, depth 93 feet, casing slotted from 56 to 93 feet.

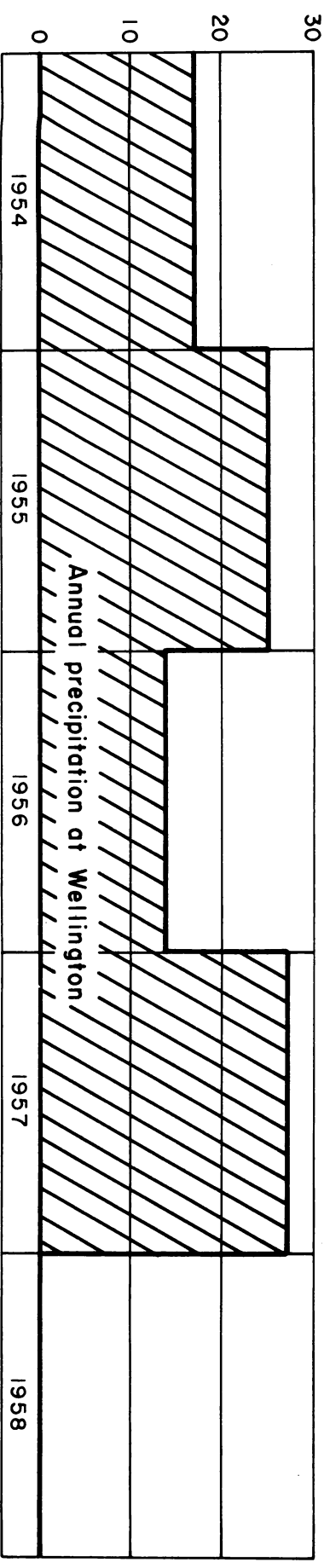
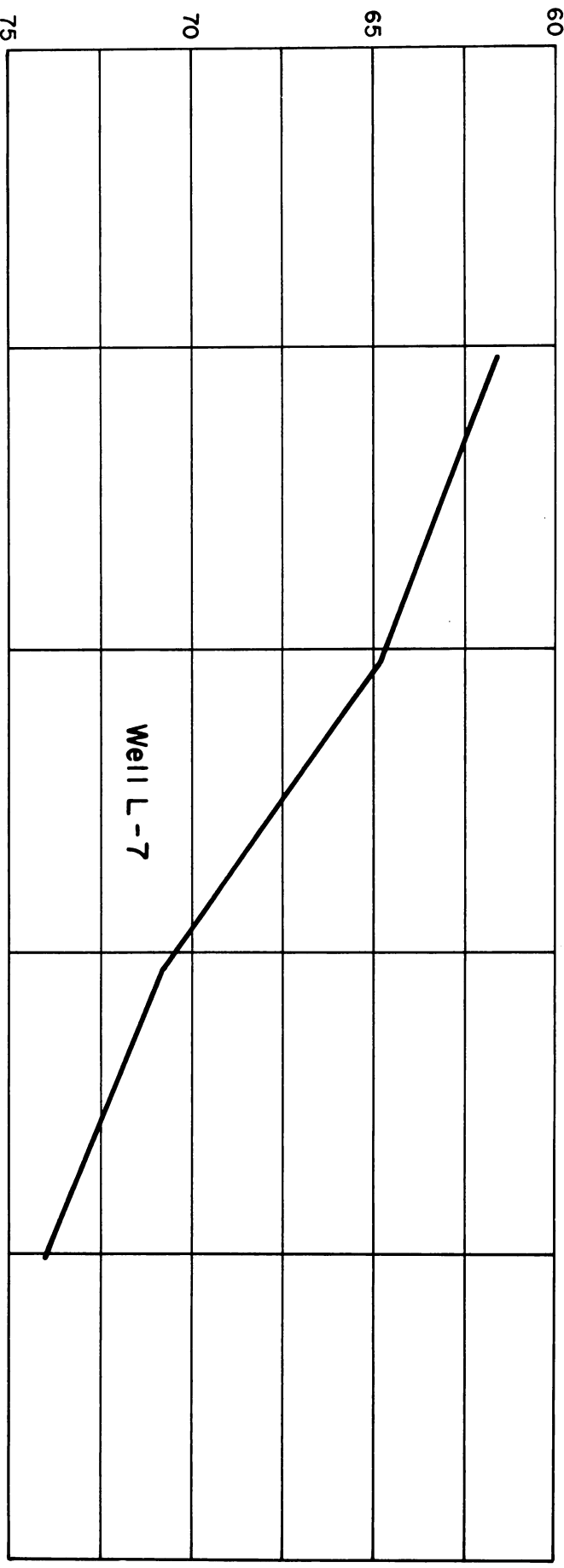
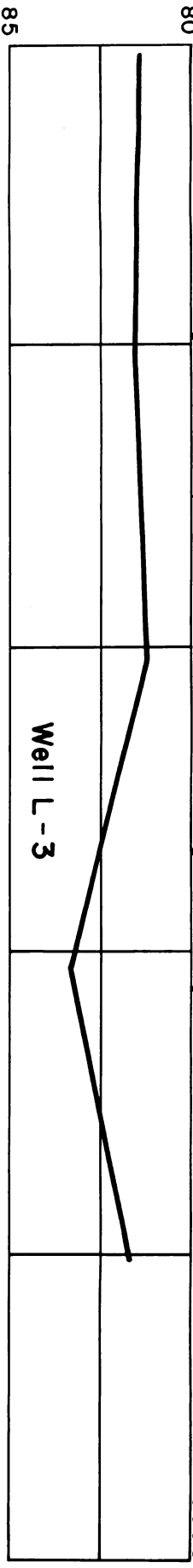
Jan. 11, 1956	53.20	Jan. 22, 1957	56.12	Jan. 7, 1958	56.25
---------------	-------	---------------	-------	--------------	-------

M-2. Lat. $34^{\circ}49'$, long. $100^{\circ}03'$. Depth 106 feet.

Jan. 11, 1956	54.58	Jan. 22, 1957	57.83	Jan. 7, 1958	57.87
---------------	-------	---------------	-------	--------------	-------

a Pumping

b Pumped recently

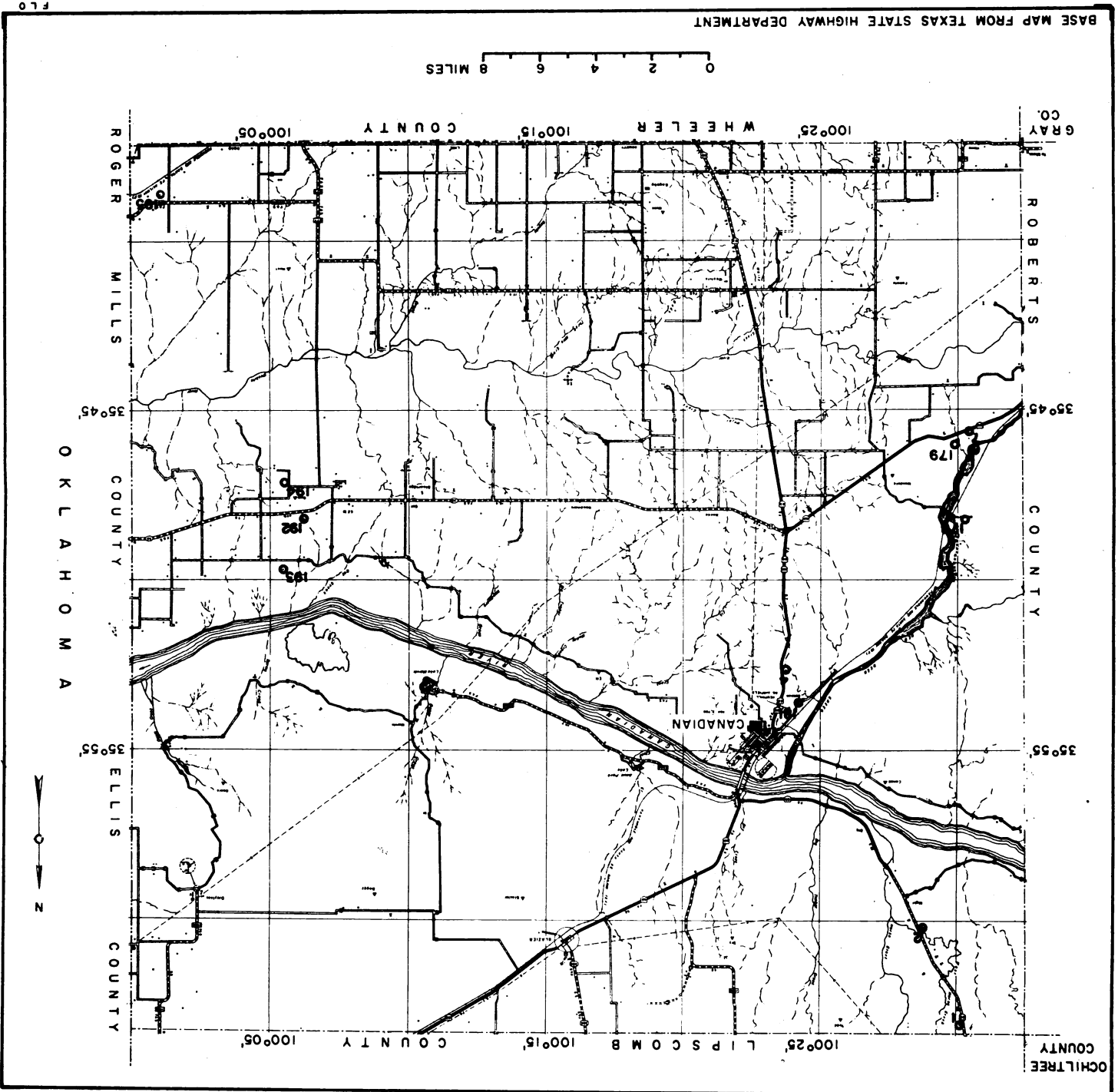


HYDROGRAPHS OF WATER LEVELS IN WELLS, COLLINGSWORTH COUNTY, AND ANNUAL PRECIPITATION AT WELLINGTON, TEXAS

FLO

H E M P H I L L C O U N T Y

OBSERVATION WELLS IN HEMPHILL COUNTY, TEXAS DECEMBER 1958



Bulletin 5806

Texas Board of Water Engineers in cooperation with the U. S. Geological Survey

WATER-LEVEL MEASUREMENTS IN HEMPHILL COUNTY, TEXAS

1. Lat. $36^{\circ}03'$, long. $100^{\circ}30'$. Diameter 4 inches, depth 142 feet.

Date	Water level	Date	Water level	Date	Water level
July 8, 1937	136.92	July 1, 1939	136.56	Dec. 4, 1940	136.76
Jan. 15, 1938	136.30	Dec. 22	136.66	Dec. 5, 1941	137.46
May 13	135.48	Apr. 9, 1940	136.65		
Mar. 11, 1939	136.17	Aug. 6	136.08		

2. Lat. $36^{\circ}00'$, long. $100^{\circ}28'$. Diameter 6 inches, depth 46 feet.

July 8, 1937	42.04	Jan. 15, 1938	41.85	Aug. 6, 1940	41.98
--------------	-------	---------------	-------	--------------	-------

4. Lat. $35^{\circ}52'$, long. $100^{\circ}24'$. Diameter 6 inches, depth 79 feet.

July 8, 1937	49.44	July 1, 1939	49.29	Apr. 9, 1940	49.85
Jan. 15, 1938	49.45	Dec. 22	49.84		

6. Lat. $35^{\circ}45'$, long. $100^{\circ}30'$. Diameter 4 inches, depth 18 feet.

July 8, 1937	12.70	Mar. 11, 1939	12.63	Apr. 9, 1940	12.71
May 13, 1938	11.54	July 1	12.21	Aug. 6	14.15

7. Lat. $35^{\circ}45'$, long. $100^{\circ}30'$. Diameter 6 inches, depth 20 feet.

May 13, 1938	8.69	Dec. 22, 1939	8.97	Dec. 4, 1940	10.64
Mar. 11, 1939	9.89	Apr. 9, 1940	9.87		
July 1	9.51	Aug. 6	11.40		

178. Lat. $35^{\circ}48'$, long. $100^{\circ}30'$. Diameter 16 inches, depth 393 feet, cased to 120 feet, slotted from 30 to 120 feet.

Jan. 19, 1957	15.52				
---------------	-------	--	--	--	--

179. Lat. $35^{\circ}46'$, long. $100^{\circ}29'$. Depth 90 feet.

July 15, 1958	33.94				
---------------	-------	--	--	--	--

181. Lat. $35^{\circ}53'$, long. $100^{\circ}24'$. Diameter 12 inches, depth 114 feet, casing slotted from 54 to 114 feet.

Jan. 14, 1956	19.22	Jan. 19, 1957	19.88	July 15, 1958	19.02
---------------	-------	---------------	-------	---------------	-------

WATER-LEVEL MEASUREMENTS IN HEMPHILL COUNTY -- CONTINUED

192. Lat. $35^{\circ}48'$, long. $100^{\circ}06'$. Diameter 12 inches, depth 156 feet, casing slotted from 81 to 156 feet.

Date	Water level	Date	Water level	Date	Water level
Jan. 20, 1957	84.53	July 14, 1958	82.58		

193. Lat. $35^{\circ}49'$, long. $100^{\circ}05'$. Diameter 14 inches, depth 193 feet, casing slotted from 103 to 193 feet.

Jan. 14, 1956	94.54	Jan. 20, 1957	96.23	July 14, 1958	93.96
---------------	-------	---------------	-------	---------------	-------

194. Lat. $35^{\circ}47'$, long. $100^{\circ}05'$. Diameter 12 inches, depth 256 feet.

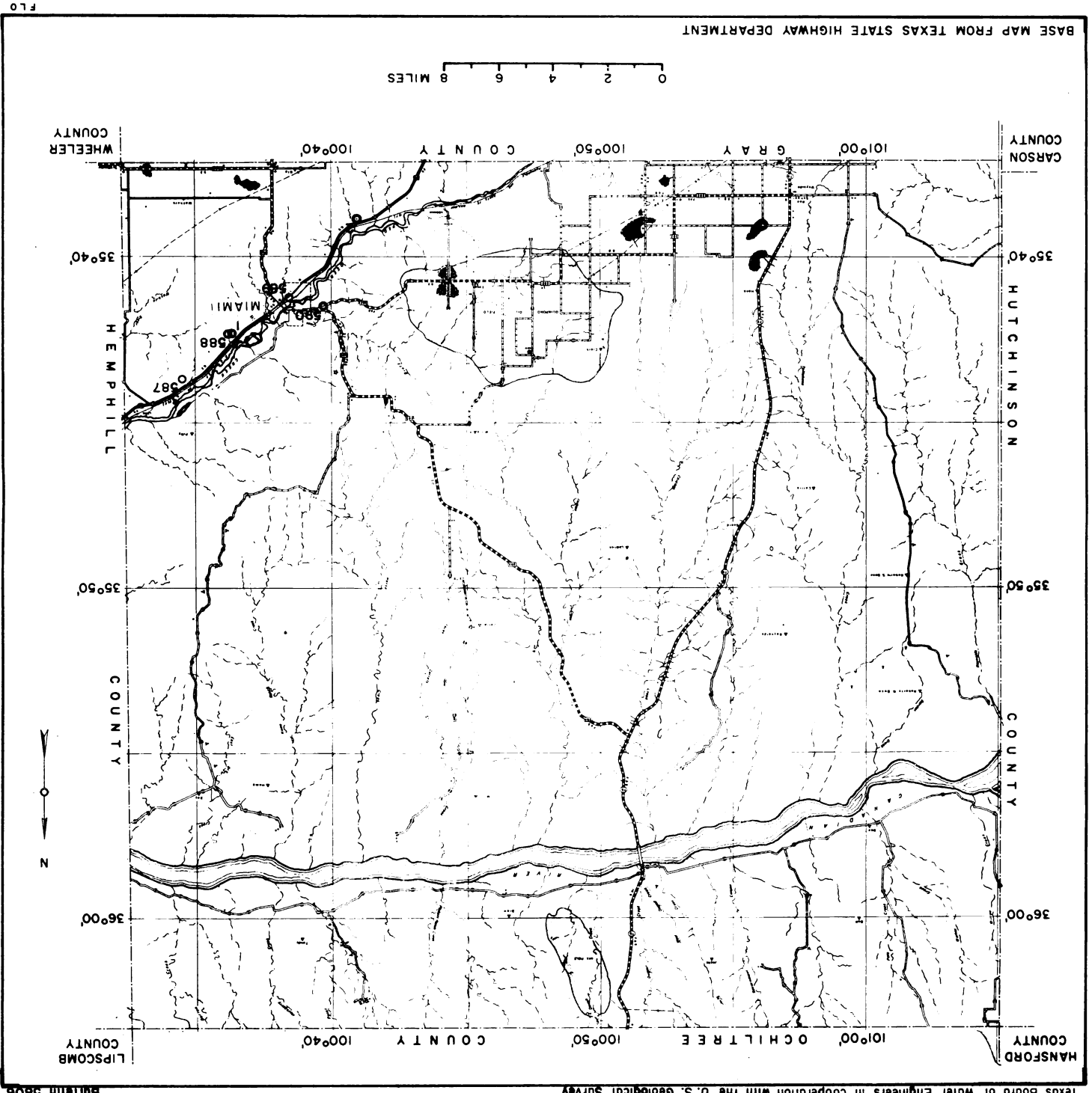
Jan. 14, 1956	199.43	Jan. 20, 1957	199.92	July 14, 1958	199.80
---------------	--------	---------------	--------	---------------	--------

195. Lat. $35^{\circ}38'$, long. $100^{\circ}02'$. Diameter 12 inches, depth 216 feet, casing slotted from 166 to 216 feet.

Jan. 20, 1957	148.60	July 14, 1958	144.94		
---------------	--------	---------------	--------	--	--

ROBERTS COUNTY

OBSERVATION WELLS IN ROBERTS COUNTY, TEXAS DECEMBER 1958



Texas Board of Water Engineers in cooperation with the U. S. Geological Survey
Bulletin 5806

WATER-LEVEL MEASUREMENTS IN ROBERTS COUNTY, TEXAS

1. Lat. 35°42', long. 100°36'. Diameter 4 inches, depth 25 feet.

Date	Water level	Date	Water level	Date	Water level
July 8, 1937	5.66	Dec. 25, 1939	6.13	Apr. 9, 1940	6.01
Jan. 15, 1938	5.60	Jan. 11, 1940	6.16	16	5.97
May 13	5.06	30	6.17	Aug. 6	6.40
Mar. 11, 1939	5.55	Feb. 24	6.10	Dec. 4	4.60
July 1	2.44	Mar. 25	5.96	Dec. 6, 1941	1.45

2. Lat. 35°38', long. 100°41'. Diameter 6 inches, depth 86 feet.

July 9, 1937	71.80	Jan. 29, 1940	70.66	Aug. 6, 1940	71.19
Mar. 11, 1939	70.68	Mar. 7	70.65	Dec. 4	71.34

3. Lat. 35°43', long. 100°34'. Depth 62 feet.

May 13, 1938	40.39	Mar. 14, 1940	40.88	Jan. 14, 1956	41.16
Mar. 11, 1939	40.81	Dec. 6, 1941	39.07	Jan. 19, 1957	43.00
Jan. 13, 1940	40.89	Jan. 11, 1955	41.38		

587. Lat. 35°44', long. 100°33'.

Jan. 11, 1953	42.14	Jan. 11, 1955	42.40	Jan. 19, 1957	42.50
Jan. 12, 1954	42.10	Jan. 14, 1956	42.81	Feb. 14, 1958	42.06

588. Lat. 35°42', long. 100°36'.

Feb. 22, 1951	68.26	Jan. 11, 1953	69.33	Jan. 18, 1957	71.70
Feb. 8, 1952	68.53				

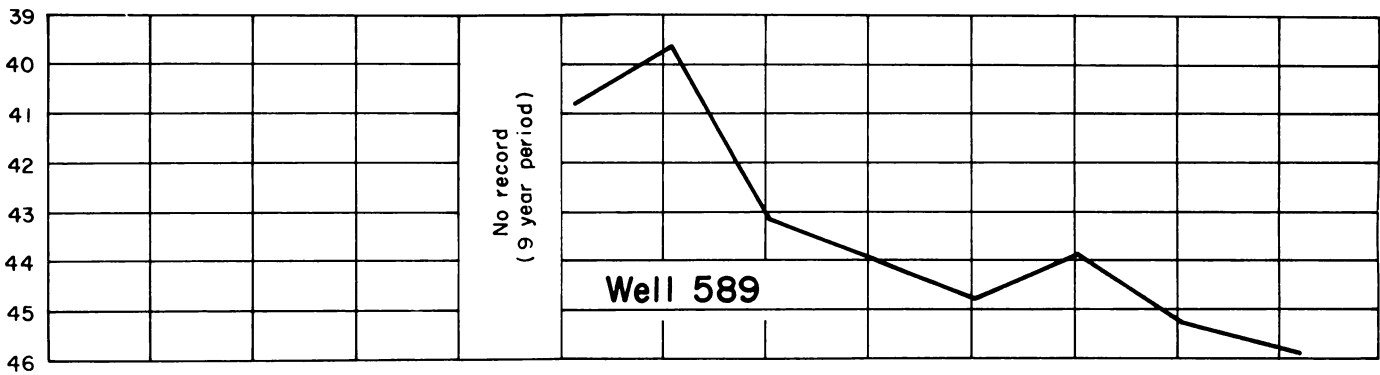
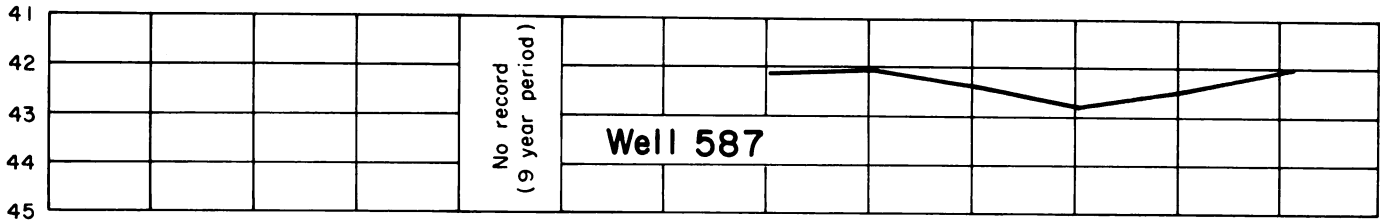
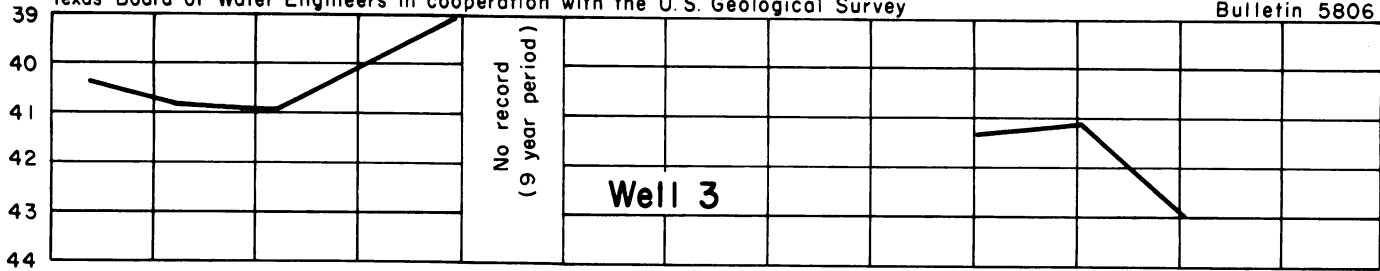
589. Lat. 35°41', long. 100°38'. Diameter 12 inches, depth 75 feet.

Feb. 21, 1951	40.80	Jan. 12, 1954	43.97	Jan. 19, 1957	45.30
Feb. 8, 1952	39.63	Jan. 11, 1955	44.77	Feb. 14, 1958	45.89
Jan. 11, 1953	43.16	Jan. 14, 1956	43.84		

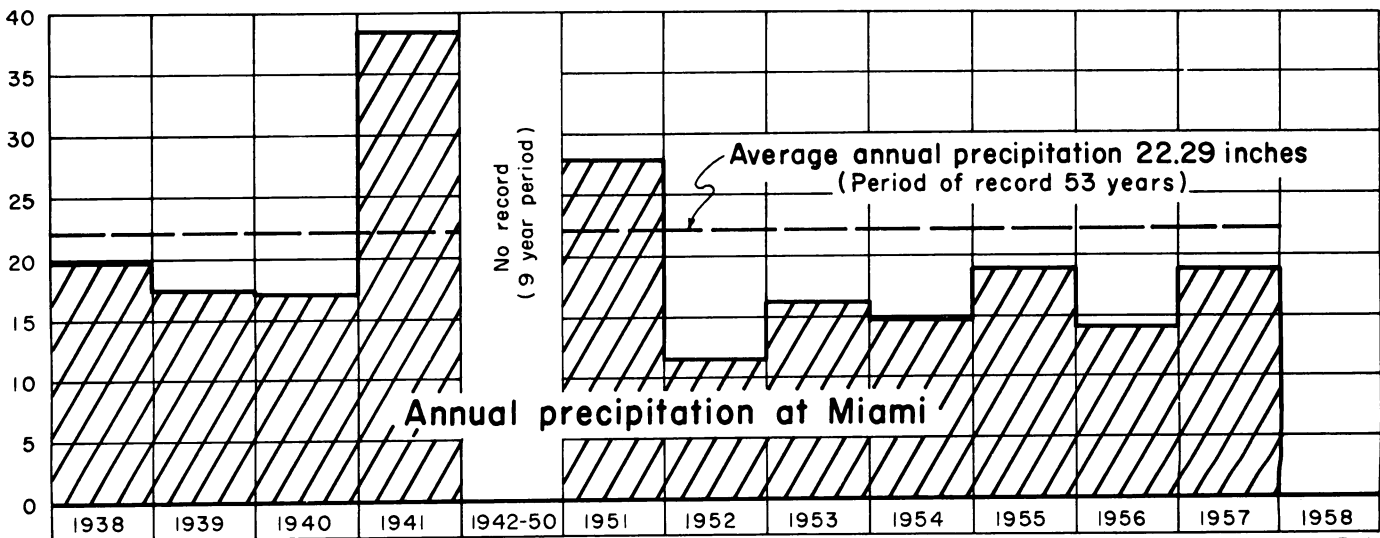
590. Lat. 35°41', long. 100°39'. Diameter 6 inches.

Feb. 21, 1951	110.36	Jan. 11, 1953	110.40	Dec. 17, 1954	111.70
Feb. 8, 1952	109.10	Jan. 12, 1954	111.00	Jan. 11, 1955	111.62

Water level in feet below land-surface datum

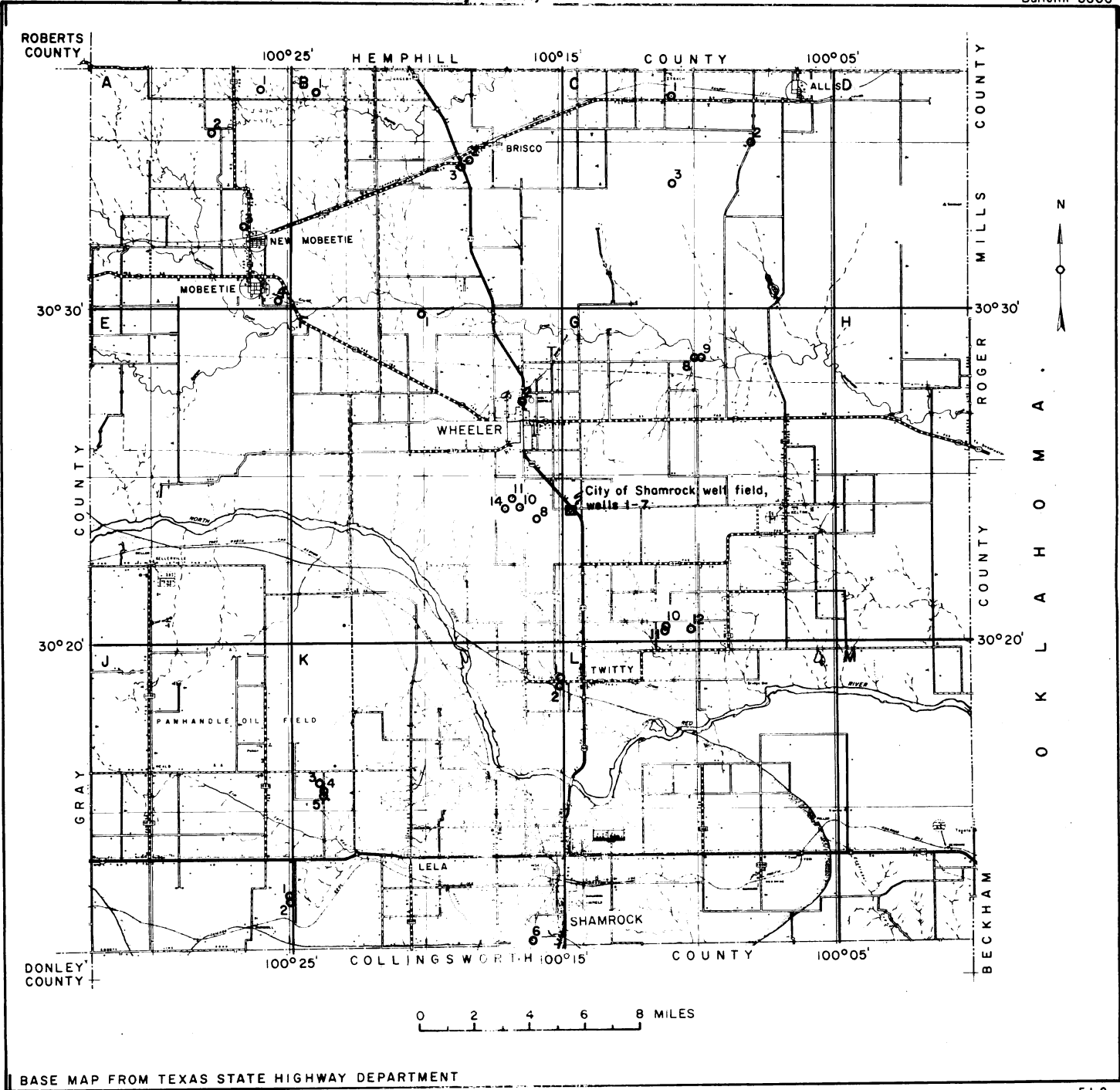


Precipitation in inches



HYDROGRAPHS OF WATER LEVELS IN WELLS, ROBERTS COUNTY, AND ANNUAL PRECIPITATION AT MIAMI, TEXAS

WHEELER COUNTY



OBSERVATION WELLS IN WHEELER COUNTY, TEXAS
DECEMBER 1958

WATER-LEVEL MEASUREMENTS IN WHEELER COUNTY, TEXAS

A-1. Lat. 35°36', long. 100°26'. Diameter 16 inches, depth 280 feet, casing slotted from 110 to 150 feet.

Date	Water level	Date	Water level	Date	Water level
Jan. 15, 1956	140.22	Jan. 20, 1957	139.61	Apr. 16, 1958	139.38

A-2. Lat. 35°35', long. 100°38'. Diameter 16 inches, depth 350 feet, casing slotted from 170 to 310 feet.

Jan. 15, 1956	162.73	Jan. 20, 1957	163.24	Apr. 16, 1958	163.10
---------------	--------	---------------	--------	---------------	--------

A-3. Lat. 35°32', long. 100°26'. Diameter 16 inches, depth 458 feet, cased to 323, slotted from 262 to 316 feet.

July 15, 1955	107.08	Jan. 20, 1957	104.72	Apr. 16, 1958	104.03
Jan. 15, 1956	107.88				

A-4. Lat. 35°30', long. 100°25'. Diameter 10 inches, depth 83 feet, casing slotted from 33 to 83 feet.

Jan. 15, 1956	17.05	Apr. 16, 1958	17.41		
---------------	-------	---------------	-------	--	--

B-1. Lat. 35°36', long. 100°24'. Diameter 16 inches, depth 335 feet, casing slotted from 235 to 335 feet.

Jan. 15, 1956	120.30	Jan. 20, 1957	122.13	Apr. 16, 1958	121.81
---------------	--------	---------------	--------	---------------	--------

B-2. Lat. 35°34', long. 100°18'. Diameter 6 inches, depth 91 feet.

Jan. 11, 1953	70.63	Jan. 11, 1955	72.14	Jan. 20, 1957	76.88
Jan. 12, 1954	71.51	Jan. 14, 1956	71.68		

B-3. Lat. 35°34', long. 100°18'. Diameter 6 inches, depth 109 feet.

Jan. 11, 1953	97.59	Jan. 14, 1956	99.59	July 15, 1958	101.82
Jan. 12, 1954	98.32	Jan. 20, 1957	100.41		
Jan. 11, 1955	98.86	Apr. 15, 1958	101.48		

C-1. Lat. 35°36', long. 100°10'. Diameter 5 inches, depth 157 feet.

Jan. 11, 1953	111.86	Jan. 11, 1955	111.66	Jan. 20, 1957	112.11
Jan. 12, 1954	111.97	Jan. 14, 1956	111.78	July 15, 1958	115.95

WATER-LEVEL MEASUREMENTS IN WHEELER COUNTY -- CONTINUED

C-2. Lat. $35^{\circ}35'$, long. $100^{\circ}08'$. Diameter 16 inches, depth 220 feet, casing slotted below 60 feet.

Date	Water level	Date	Water level	Date	Water level
Feb. 8, 1952	63.15	Jan. 12, 1954	62.44	Jan. 14, 1956	61.52
Jan. 11, 1953	62.49	Jan. 11, 1955	61.60		

C-3. Lat. $35^{\circ}33'$, long. $100^{\circ}10'$. Diameter 16 inches.

Feb. 8, 1952	36.88	Jan. 12, 1954	37.76	Jan. 14, 1956	37.26
Jan. 11, 1953	37.85	Jan. 11, 1955	37.69	July 15, 1958	38.48

F-1. Lat. $35^{\circ}29'$, long. $100^{\circ}20'$. Diameter 12 inches, depth 140 feet, casing slotted from 30 to 140 feet.

Jan. 15, 1956	1.91	Jan. 20, 1957	2.35	July 15, 1958	2.14
---------------	------	---------------	------	---------------	------

F-2. Lat. $35^{\circ}27'$, long. $100^{\circ}16'$. Diameter 16 inches, depth 95 feet, casing slotted from 55 to 95 feet.

July 12, 1955	11.46	Jan. 20, 1957	18.77	July 15, 1958	12.13
Jan. 15, 1956	32.82				

F-8. Lat. $35^{\circ}23'$, long. $100^{\circ}15'$. Depth 64 feet.

Jan. 12, 1955	20.65	Jan. 19, 1957	33.70		
---------------	-------	---------------	-------	--	--

F-10. Lat. $35^{\circ}23'$, long. $100^{\circ}16'$.

Jan. 14, 1956	118.20	Jan. 19, 1957	120.75	July 16, 1958	123.18
---------------	--------	---------------	--------	---------------	--------

F-11. Lat. $35^{\circ}24'$, long. $100^{\circ}16'$.

Jan. 14, 1956	86.90	Jan. 19, 1957	96.71		
---------------	-------	---------------	-------	--	--

F-14. Lat. $35^{\circ}24'$, long. $100^{\circ}17'$.

Jan. 11, 1955	73.54	Jan. 19, 1957	80.98		
---------------	-------	---------------	-------	--	--

WATER-LEVEL MEASUREMENTS IN WHEELER COUNTY -- CONTINUED

G-1. Lat. 35°23', long. 100°14'. Diameter 18 inches, depth 50 feet.

Date	Water level	Date	Water level	Date	Water level
Dec. 13, 1946	26.5	Jan. 11, 1953	28.82	Jan. 19, 1957	28.57
Feb. 22, 1951	24.25	Jan. 10, 1955	32.59	July 16, 1958	29.47
Feb. 8, 1952	28.64	Jan. 14, 1956	28.81		

G-2. Lat. 35°23', long. 100°14'. Diameter 18 inches, depth 36 feet.

Dec. 13, 1946	22.8	Jan. 11, 1953	24.19	Jan. 19, 1957	22.33
14	21.28	Jan. 10, 1955	27.47		
Feb. 22, 1951	18.60	Jan. 14, 1956	22.47		

G-3. Lat. 35°23', long. 100°14'. Diameter 18 inches, depth 45 feet.

Dec. 13, 1946	32.1	Jan. 11, 1953	35.29	Jan. 19, 1957	31.23
Feb. 22, 1951	27.75	Jan. 10, 1955	36.03		
Feb. 8, 1952	32.20	Jan. 10, 1956	31.59		

G-4. Lat. 35°23', long. 100°14'. Diameter 18 inches, depth 66 feet.

Dec. 14, 1946	34.88	Jan. 10, 1955	41.72	Jan. 19, 1957	42.55
Feb. 22, 1951	33.36				

G-5. Lat. 35°23', long. 100°14'. Diameter 18 inches, depth 73 feet.

Dec. 14, 1946	42.8	Jan. 11, 1953	52.17	Jan. 19, 1957	51.10
Feb. 22, 1951	40.70				

G-6. Lat. 35°23', long. 100°14'. Diameter 16 inches, depth 121 feet.

Feb. 8, 1952	66.79	Jan. 10, 1955	72.57	Jan. 19, 1957	66.90
Jan. 11, 1953	70.16	Jan. 14, 1956	67.01		

G-7. Lat. 35°23', long. 100°14'. Diameter 16 inches, depth 128 feet.

Feb. 22, 1951	85.71	Jan. 12, 1954	92.90	Jan. 19, 1957	86.27
Feb. 8, 1952	84.48	Jan. 10, 1955	92.45		
Jan. 11, 1953	88.27	Jan. 14, 1956	86.58		

G-8. Lat. 35°28', long. 100°10'. Diameter 12 inches, depth 44 feet, casing slotted from 29 to 44 feet.

Jan. 15, 1956	8.90	Jan. 20, 1957	9.02	July 15, 1958	6.46
---------------	------	---------------	------	---------------	------

WATER-LEVEL MEASUREMENTS IN WHEELER COUNTY--CONTINUED

G-9. Lat. 35°28', long. 100°09'. Diameter 6 inches, depth 44 feet, casing slotted from 24 to 44 feet.

Date	Water level	Date	Water level	Date	Water level
July 21, 1955	9.78	Jan. 20, 1957	8.43	July 15, 1958	5.54
Jan. 15, 1956	10.20				

G-10. Lat. 35°20', long. 100°11'. Diameter 12 inches, depth 82 feet, cased to 68 feet, slotted from 28 to 68 feet.

Jan. 14, 1956	11.15	Jan. 20, 1957	12.52	July 15, 1958	10.89
---------------	-------	---------------	-------	---------------	-------

G-11. Lat. 35°20', long. 100°11'.

Jan. 14, 1956	5.40	Jan. 21, 1957	7.58	July 15, 1958	5.74
---------------	------	---------------	------	---------------	------

G-12. Lat. 35°20', long. 100°10'. Diameter 12 inches, depth 202 feet, casing slotted from 42 to 202 feet.

Jan. 14, 1956	25.11	Jan. 20, 1957	23.93	July 15, 1958	21.68
---------------	-------	---------------	-------	---------------	-------

J-1. Lat. 35°12', long. 100°25'. Diameter 12 inches, depth 160 feet.

Jan. 21, 1957	28.65	July 16, 1958	28.20		
---------------	-------	---------------	-------	--	--

J-2. Lat. 35°12', long. 100°25'. Depth 37 feet.

Jan. 15, 1956	16.40	Jan. 21, 1957	17.62	July 16, 1958	16.54
---------------	-------	---------------	-------	---------------	-------

K-1. Lat. 35°18', long. 100°15'. Diameter 13 inches, depth 132 feet, casing slotted from 70 to 125 feet.

Jan. 15, 1956	34.84	Jan. 20, 1957	37.26	July 15, 1958	34.71
---------------	-------	---------------	-------	---------------	-------

K-2. Lat. 35°18', long. 100°15'. Diameter 13 inches, depth 120 feet, casing slotted from 60 to 120 feet.

July 12, 1955	28.08	Jan. 20, 1957	32.28	July 15, 1958	29.26
Jan. 15, 1956	29.77				

K-3. Lat. 35°15', long. 100°24'. Diameter 16 inches, depth 60 feet.

July 16, 1955	8.70	Jan. 20, 1957	8.65	July 16, 1958	7.92
Jan. 15, 1956	8.00				

WATER-LEVEL MEASUREMENTS IN WHEELER COUNTY -- CONTINUED

K-4. Lat. $35^{\circ}15'$, long. $100^{\circ}24'$. Diameter 16 inches.

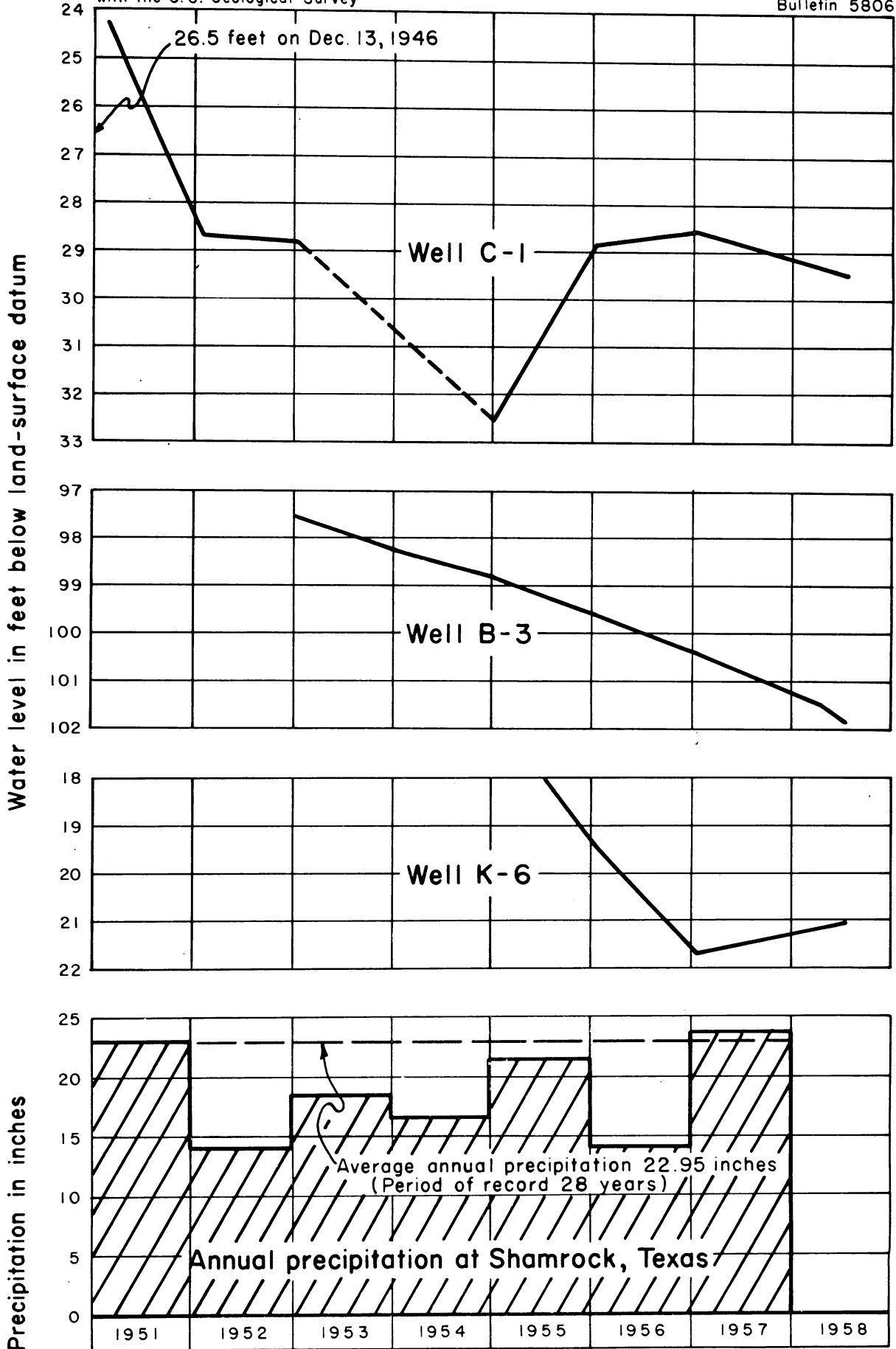
Date	Water level	Date	Water level	Date	Water level
Jan. 15, 1956	6.30	Jan. 20, 1957	7.02	July 16, 1958	5.89

K-5. Lat. $35^{\circ}15'$, long. $100^{\circ}24'$.

Jan. 15, 1956	26.38	Jan. 20, 1957	27.54	July 16, 1958	25.99
---------------	-------	---------------	-------	---------------	-------

K-6. Lat. $35^{\circ}11'$, long. $100^{\circ}16'$. Diameter 18 inches, depth 74 feet, casing slotted from 34 to 74 feet.

July 16, 1955	18.08	Jan. 21, 1957	21.67	July 16, 1958	21.08
Jan. 15, 1956	19.39				



HYDROGRAPHS OF WATER LEVELS IN WELLS, WHEELER COUNTY, AND ANNUAL PRECIPITATION AT SHAMROCK, TEXAS