

BLANCO COUNTY, TEXAS

Records of wells and springs, drillers' logs, water analyses,
and map showing locations of wells and springs

TEXAS STATE BOARD OF WATER ENGINEERS

C. S. Clark, Chairman

A. H. Dunlap, Member

J. W. Pritchett, Member

Prepared in cooperation with the United States
Department of the Interior, Geological Survey

January 1942

BLANCO COUNTY, TEXAS

By

B. A. Barnes and J. C. Cumley

This report contains records of 436 wells, drillers' logs of 8 wells, and the results of chemical analyses of water from 369 wells and springs in Blanco County, Texas. The records were obtained in 1938 and 1941 in connection with the state-wide program of ground-water investigations in Texas by the State Board of Water Engineers in cooperation with the United States Department of the Interior, Geological Survey. The analyses were made in part by E. W. Lohr and W. W. Hastings, Chemists, Quality of Water Division, Federal Geological Survey and in part by chemists employed by the Work Projects Administration under the direction of Dr. E. P. Schoch, Director, Texas Bureau of Industrial Chemistry, and Mr. Lohr and Mr. Hastings.

The inventory was started in the summer of 1938 and completed in the summer and fall of 1941.

These records serve as a guide to land owners, well drillers, and others who need information regarding wells, the depth to ground water in different parts of the county, and the quality and chemical character of water yielded by the wells. They afford a basis for the more intensive investigation that is now being carried on by the State Board of Water Engineers in cooperation with the Federal Geological Survey.

A limited number of copies of this release are available for free distribution. They may be obtained by addressing a request to Mr. C. S. Clark, Chairman, Texas State Board of Water Engineers, 302 West 15th Street, Austin, Texas.

This release was mimeographed by employees of the Work Projects Administration Project No. 17276.

Records of wells and springs in Blanco County, Texas
All wells are drilled unless otherwise stated under remarks

Well No.	Distance from Round Mountain	Owner	Driller	Date completed	Depth of well (ft.)	Diameter of well (in.)	Height of measuring point above ground (ft.)
1	13½ miles northwest	Mrs. W. L. Hardin	--	Old	40	48	2
2	12½ miles northwest	Lon R. Hardin	--	--	Spring	--	--
3	15¼ miles west	Mrs. W. O. Davis, Sr.	--	--	Spring	--	--
4	14 miles west	Grote Estate	Karl Kuntz	1929	200	6	1.2
5	13-¾ miles southwest	A. R. Grote	-- Presslar	--	200	6	0.8
6	12-¾ miles southwest	Grote Estate	-- McDougall	1900	110	6	1
7	11½ miles west	do.	Lee Polvado	1906	73	6	1
8	11½ miles northwest	Dan Crowmover	--	Old	40	36	2
9	10½ miles northwest	do.	--	1925	180	5	1
10	9-¾ miles west	J. M. West	--	Old	150	--	--
11	9½ miles west	Mrs. Gus Sultemeier	Ernest and Gus Sultemeier	1921	225	6	1
12	10½ miles west	Mrs. Mary T. Smith	Paul Newman	1905	104	6	0.3
13	9-¾ miles southwest	C. W. Freer	--	--	Spring	--	--
14	9 miles southwest	H. N. Lunday	--	--	Spring	--	--
15	8-¾ miles southwest	do.	--	1930	156	6	0.3
16	8-¾ miles west	Julia Sultemeier	--	--	Spring	--	--
17	do.	do.	A. W. Sultemeier	1920	126	6	0.5
18	8½ miles west	Kurt Eckert	--	Old	80	6	0
19	8½ miles west	A. W. Sultemeier	A. W. Sultemeier	1921	212	6	0.5
20	8 miles northwest	Carl C. Smith	Willard Sitton	1939	184	6	1
21	8-¾ miles northwest	J. M. West	--	--	15	6	0.5
22	do.	T. C. Haynes	--	--	Spring	--	--
23	9-¾ miles northwest	Clifford Haynes	--	--	44	5	0.5

a/ Plus (+) indicates water level is above ground.

b/ H, hand pump or bucket and rope; W, windmill; T, turbine; S, suction; E, electric motor; G, gasoline engine; number indicates horsepower.

Chemical analyses of water from most of these wells are in the table of analyses.

Well No.	Water level		Method of lift	Use of water	Remarks
	Depth below measuring point (ft.)	Date of measurement			
1	33.54	July 30, 1940	W, G	D, S	Dug well. Cased to 6 feet.
2	+	do.	Flows	D, S	In bed of creek. Estimated flow 5-10 gallons a minute from gravel. Reported never to have failed.
3	+	do.	Flows	D, S	In bed of creek. Estimated flow 30 gallons a minute from gravel. Reported never to have failed.
4	13.89	July 31, 1941	W	S	Cased to bottom. Known as Comanche Spring. Supply reported rather small. Granite reported at about 190 feet.
5	29.18	do.	W	S	Cased to 6 feet.
6	71.30	do.	W	D, S	Cased to about 100 feet. Supply reported rather small. Granite reported at about 100 feet at ranch headquarters.
7	10.79	do.	W	D, S	Cased to 20 feet. Supplies hunting camp.
8	15.43	July 30, 1941	W, G	D, S	Dug well. Granite reported at 40 feet.
9	29.79	do.	W	D, S	Supply reported rather small. Reported that the only water-bearing bed is at 90-100 feet.
10	--	--	W	D, S	Known as Dorbant ranch.
11	177.66	July 31, 1941	W	D, S	Cased to bottom. Supply reported rather small.
12	30	do.	H	D, S	Cased to 45 feet. Supply reported rather small. Water has sweet taste.
13	+	Aug. 4, 1941	Flows	D, S	In bed of creek. Estimated flow 1 gallon a minute from limestone. Reported never to have failed.
14	+	Aug. 8, 1941	Flows	F	At foot of steep hill. Estimated flow 1 gallon a minute. Reported never to have failed.
15	120.32	do.	None	--	Cased to 40 feet.
16	+	July 31, 1941	Flows	D, S	In side of steep hill. Estimated flow 15 gallons a minute from limestone.
17	49.59	do.	W	S	Supply reported rather small.
18	21.92	do.	W	S	In bank of creek.
19	160.57	July 30, 1941	W	D, S	Cased to 160 feet. Water reported from red sandstone at 160-212 feet.
20	100.10	July 28, 1941	W	S	Cased to about 150 feet.
21	7.85	Aug. 18, 1941	W	D, S	
22	+	July 29, 1941	Flows	S	In bank of creek. Estimated flow 40 gallons a minute. Reported not to have failed in 23 years.
23	25.66	July 30, 1941	W	S	

c/ D, domestic; S, stock; I, irrigation; P, public supply; N, not used.

d/ Reported by driller or owner.

Records of wells and springs in Blanco County--Continued

Well No.	Distance from Round Mountain	Owner	Driller	Date completed	Depth of well (ft.)	Diameter of well (in.)	Height of measuring point above ground (ft.)
24	8-3/4 miles northwest	W. C. Haynes	Earl Johnson	1924	100	6	0
25	8 1/2 miles northwest	A. P. Haynes	Lee Polvado	1918	175	5	1
26	7 1/2 miles northwest	Carl C. Smith	--	--	Spring	--	--
27	do.	do.	Lee Palvado	1917	128	4	--
28	6 1/2 miles northwest	do.	do.	1918	220	6	0.5
29	do.	do.	Herman Bergerman	1913	150	6	0.5
30	7 miles northwest	do.	Willard Sitton	1939	180	6	--
31	6 1/2 miles west	do.	Earl Johnson	1933	116	6	1
32	do.	do.	--	Old	85	6	1
33	7 1/2 miles west	Fred Sultemeier	A. W. Sultemeier	1929	82	6	0.5
34	7 miles southwest	J. N. Crider	--	Old	105	48	1
35	6 miles southwest	do.	Willard Sitton	1935	165	8	1
36	5-3/4 miles southwest	Mrs. L. F. Stribling	--	Old	171	6	1
37	5 1/2 miles southwest	do.	Earl Johnson	1930	240	6	2.5
38	5 1/2 miles west	W. R. Crider	--	1931	263	4	0.5
39	5 miles northwest	do.	Earl Johnson	1939	222	5	0.5
40	do.	Carl C. Smith	--	--	Spring	--	--
41	5 1/2 miles northwest	do.	Willard Sitton	1939	66	5	--
42	6 miles northwest	Blanco County	--	--	Spring	--	--
43	5 1/2 miles northwest	Louis Ebeling	--	--	Spring	--	--
44	do.	do.	-- Pressiar	1920	47	6	1
45	do.	Max Ebeling	--	--	Spring	--	--
46	4-3/4 miles northwest	Louis Ebeling	Earl Johnson	1925	82	6	0
47	4 1/2 miles northwest	Leon M. Haynes	Davis and Lomach	1919	100	6	--
48	4 miles west	W. A. Woolsey	--	Old	300+	8	1
49	3 1/2 miles west	do.	--	--	174	6	0.5

Well No.	Water level Depth below measuring point (ft.)	Date of measurement Date	Method of lift a/ b/ c/	Use of water D, S N S	Remarks
24	22.78	July 29, 1941	W	D, S	Cased to 3 feet. Supply reported rather small.
25	103	July 28, 1941	W	D, S	Do.
26	+	do.	Flows	S	In bed of creek. Estimated flow 3 gallons a minute from limestone.
27	+	do.	Flows	N	On creek terrace. Estimated flow $\frac{1}{2}$ gallon a minute.
28	57.90	do.	W	D, S	Cased to 20 feet. North well at ranch headquarters.
29	58.48	do.	W	D, S	Cased to 20 feet. Yields 3 gallons a minute. South well at ranch headquarters.
30	70 d/	do.	T, E	S	Cased to about 100 feet. Known as Camp Messey well.
31	82.72	July 28, 1941	W	D, S	Cased to bottom; 2 bottom joints of casing perforated. Supply reported rather small. Known as
32	25.35	do.	W	S	Cased to bottom. Camp John well.
33	37.5	July 31, 1941	W	D, S	Do.
34	66.50	July 24, 1941	None	N	Dug well. Supply reported rather small.
35	112.22	do.	W	D, S	Cased to 100 feet.
36	144.19	do.	W	D, S	Supply reported small during droughts.
37	237.30	do.	None	N	Cased to bottom.
38	177.70	do.	W	D, S	Do.
39	150.62	do.	W	S	Do.
40	+	July 28, 1941	Flows G	D, S	In bed of creek. Estimated flow 5 gallons a minute from limestone. Yields 10 gallons a minute.
41	20 d/	do.	T, E	S	Supply reported rather small. Reported never to have failed.
42	+	July 29, 1941	Flows	N	At side of road on long steep slope. Estimated flow 15 gallons a minute from gravel.
43	+	July 25, 1941	Flows	S	In bed of creek. Estimated flow 20 gallons a minute from limestone. Reported never to have
44	28.16	do.	W	D, S	Cased to 20 feet. failed.
45	+	Aug. 18, 1941	Flows	S	In bank of creek. Estimated flow 3 gallons a minute from limestone. Reported never to have
46	25.50	July 25, 1941	W	S	Cased to about 15 feet. failed.
47	25 d/	do.	W, H	D, S	Cased to 28 feet. Has yielded 15 gallons a minute with gasoline engine.
48	86 d/	July 23, 1941	W	D, S	Has been pumped with gasoline engine without failure.
49	133.47	do.	W	S	

Records of wells and springs in Blanco County--Continued

Well No.	Distance from Round Mountain	Owner	Driller	Date completed	Depth of well (ft.)	Diameter of well (in.)	Height of measuring point above ground (ft.)
50	4 miles southwest	J. H. Rosa and Sons	--	--	Spring	--	--
51	3 miles southwest	Mrs. L. F. Stribling	--	--	150±	6	--
52	2-3/4 miles southwest	do.	--	--	154	6	1
53	2 1/2 miles northwest	S. T. Desmond Estate	Earl Johnson	1935	145	6	1
54	2-3/4 miles northwest	Louis Ebeling	Lee Polvado	1920	240	6	1
55	3 1/2 miles northwest	Charles P. Havnes	--	--	352	5	--
56	do.	Max Ebeling	Max Ebeling	1914	31	6	3
57	do.	do.	--	--	Spring	--	--
58	1-3/4 miles northwest	W. M. Zick	--	--	96	6	3
59	2 miles northwest	Christien Birck	--	--	101	6	2
60	2 miles west	Ernest Fischenger	--	1925	111	--	1
61	do.	Mrs. L. F. Stribling	--	1933	430±	6	0.5
62	2 1/2 miles southwest	do.	--	Old	69	6	1
63	2 1/4 miles southwest	John Grisham	--	Old	98	6	0.5
64	1-3/4 miles southwest	Frank Clarke	--	--	80	6	0.9
65	do.	do.	--	--	112	--	--
66	1 mile northwest	James Perry	--	--	Spring	--	--
67	do.	do.	--	--	37	48	2
68	2 1/2 miles northwest	Max Ebeling	Earl Johnson	1938	133	5	1
69	2 miles northeast	Carl Kast	--	--	119	--	1
70	3/4 mile northeast	Mrs. Bertha Schroeder	--	Old	21	6	0.4
71	1/2 mile east	J. J. Rivera	--	1918	65	6	1.1
72	3/4 miles south	H. H. Weinheimer	--	--	175	6	1.2
73	3 1/2 miles southeast	Mrs. L. Wiedebusch	-- Prosslar	1916	140	6	--
74	2 1/2 miles southeast	Oscar Robinson	--	--	Spring	--	--

Well No.	Water level		Method of lift	Use of water	Remarks
	Depth below measuring point (ft.)	Date of measurement a/			
50	+	July 22, 1941	Flows	S	Estimated flow 2 gallons a minute from limestone.
51	--	--	W	D,S	
52	106.60	July 23, 1941	W	S	
53	102.72	July 25, 1941	W	D,S	Cased to 20 feet.
54	66	do.	W	S	Cased to about 100 feet. Known as Sage Hill well.
55	--	--	G	D,S	Supply reported rather small.
56	13.87	Aug. 18, 1941	W	S,I	Cased to bottom; bottom joint of casing perforated. Has supplied 200 head of cattle. Irrigated garden.
57	+	do.	Flows	S	In bed of creek. Estimated yield 40 gallons a minute from limestone. Reported to fail during droughts.
58	64.40	July 25, 1941	W	S	
59	75.96	do.	W	D,S	
60	90.50	do.	W	D,S	
61	115	July 23, 1941	W	S	Supply reported rather small. Known as Clear Mountain well.
62	13.83	do.	H	D,S	
63	52.68	do.	H	D,S	
64	9.12	Aug. 10, 1938	W	S	Reported to flow during wet weather.
65	--	--	W	S	
66	+	July 25, 1941	Flows	D	In bed of creek. Estimated flow 5 gallons a minute from gravel. Reported never to have failed.
67	15.17	do.	H	D,S	Dug well. Low on creek terrace.
68	93.93	Aug. 18, 1941	W	S	Cased to 80 feet. Has supplied 50 head of cattle.
69	63.54	Aug. 11, 1938	W,G	--	
70	77.14	do.	W	D,S	
71	32.79	Aug. 10, 1938	H	--	Water reported in gray sandstone at 65 feet. Reported drawdown 6 feet after well was bailed at 5 gallons a minute for 3 hours.
72	131.62	Aug. 9, 1938	W	D,S	
73	--	do.	W	--	
74	+	Aug. 10, 1938	Flows	D,S	In bed of creek. Estimated flow about 7 gallons a minute. Reported to fail during droughts.

Records of wells and springs in Blanco County--Continued

Well No.	Distance from Round Mountain	Owner	Driller	Date completed	Depth of well (ft.)	Diameter of well (in.)	Height of measuring point above ground (ft.)
75	2½ miles southeast	Oscar Robinson	--	--	Spring	--	--
76	1-¾ miles southeast	do.	--	--	60	--	0.7
77	1-¾ miles east	do.	--	1898	115	6	0
78	do.	do.	--	1935	171	--	0.8
79	3¼ miles northeast	Peter Shelley	--	1880	78	70	--
80	do.	do.	--	1880	78	6	--
81	3 miles northeast	J. W. Smith	-- Harve	1935	159	7	0.4
82	2½ miles east	Otto Wiedebusch	--	1898	80	6	--
83	3-¾ miles southeast	-- Croft	--	--	140	6	1.0
84	4½ miles southeast	J. J. Fuchs	-- Sultemeier	1910	190	6	--
85	5½ miles southeast	Gas Lechow	--	--	Spring	--	--
86	4-¾ miles southeast	B. Croft	--	--	27	26	0.4
87	3½ miles east	Otto Wiedebusch	--	1929	135	6	1.3
88	3-¾ miles northeast	Mrs. Lec Burnam	--	--	Spring	--	--
89	5¼ miles east	C. A. Duncan	Earl Johnson	1933	225	6	--
90	5½ miles east	do.	--	--	90	6	--
91	5-¾ miles southeast	R. L. Youngblood	Earl Johnson	1937	97	6	--
92	6½ miles southeast	Victor Wenmohs	--	--	--	--	2.2
93	do.	J. B. Wenmoth	--	--	180	6	0.5
94	8 miles southeast	Armin Schrader	--	--	151	6	2.7
95	9-¾ miles southeast	A. L. Young	Earl Johnson	1930	126	5½	1.2
96	10-¾ miles east	Federal Joint Stock Land Bank	A. L. Young	1908	62	5½	1.9
97	11½ miles east	J. O. Hollingsworth	Alvey Haden	1918	124	5½	--
98	12 miles east	M. J. Stricklan	do.	1913	82±	6?	0.3

a/ Plus (+) indicates water level is above ground.

b/ H, hand pump or bucket and rope; W, windmill; T, turbine; S, suction; E, electric motor; G, gasoline engine; number indicates horsepower.

Well No.	Water level		Method of lift	Use of water	Remarks
	Depth below measuring point (ft.)	Date of measurement a/			
75	+	Aug. 10, 1938	Flows	--	In bed of creek. Estimated flow 30 gallons a minute. Reported never to have failed.
76	2.61	do.	H	D,S	Dug well. Reported to fail during droughts.
77	108.26	do.	None	N	Cased to 100 feet. Water reported too hard for domestic use.
78	127.22	do.	W	S	Cased to 135 feet. Water reported at 130-140 feet. Yields 7 gallons a minute.
79	--	--	None	N	Dug well. Cased to 8 feet.
80	63 d/	Aug. 11, 1941	W	--	Cased to 10 feet.
81	97.53	do.	W	D,S	Cased to 100 feet. Yields 18 gallons a minute.
82	--	--	W	S	Yields 3 gallons a minute.
83	99.14	Aug. 9, 1938	W,G	--	
84	140 d/	do.	W	D,S	Yields 2 gallons a minute. Cased to about 120 feet.
85	+	Aug. 5, 1938	Flows	D,S	In bottom of creek. Estimated flow about 5 gallons a minute from limestone. Reported never to
86	16.76	Aug. 10, 1938	W	D,S	Dug well. have failed. Temperature 66° F.
87	64.41	do.	W	D,S	Yields about 2 gallons a minute.
88	+	Aug. 11, 1938	Flows	S	In bed of creek. Estimated flow about 20 gallons a minute from limestone. Reported never to have
89	--	Aug. 10, 1938	W	D,S	Yields 1 gallon a minute. failed. Temperature 70° F.
90	--	--	W	S	Yields about 8 gallons a minute.
91	35 d/	Aug. 5, 1938	W	D,S	Cased to bottom. Yields 10 gallons a minute.
92	35.09	Aug. 4, 1938	W	S	Dug well. Supply reported rather small.
93	72.38	Aug. 5, 1938	W	D,S	
94	28.47	do.	W	D,S	
95	38.5	July 15, 1938	W	D,I	Cased to 126 feet; bottom joint of casing perforated. Yields 2½ gallons a minute.
96	52	do.	W	--	Cased to bottom. Yields 7 gallons a minute.
97	74 d/	do.	W	D,S	Cased to bottom. Yields 9 gallons a minute.
98	48	do.	W	N	No casing. Yield reported about 3 gallons a minute.

c/ D, domestic; S, stock; I, irrigation; P, public supply; N, not used.

d/ Reported by driller or owner.

Records of wells and springs in Blanco County--Continued

Well No.	Distance from Johnson City	Owner	Driller	Date completed	Depth of well (ft.)	Diameter of well (in.)	Height of measuring point above ground (ft.)
111	16 $\frac{1}{4}$ miles northeast	Coke Hollingsworth	King Heavington	1903	65	5	--
112	15 $\frac{1}{2}$ miles northeast	John Fasel	--	1896	105	6	0.7
113	15 miles northeast	Carl Kauss	P. Newman	1914	133	6	--
114	do.	Gus Stieler	Chas. Lyendecker	1935	142	6	1.2
115	13 $\frac{1}{4}$ miles northeast	Hugo Fuchs	-- Lomach	1918	85	6	--
116	11 $\frac{1}{2}$ miles east	H. M. Ulrich	Chas. Haden	1930	175	6?	--
117	12 miles east	Ed Auge	--	Old	81	6	0.7
118	11 $\frac{1}{2}$ miles southeast	Frank Gould	Earl Johnson	1926	170	6	1.4
119	11 miles southeast	C. L. Ragland	--	Old	40	6	3
120	11 $\frac{1}{4}$ miles southeast	M. E. Whitmer	--	--	Spring	--	--
121	do.	J. Q. Gaines	A. Clements	1923	160	6	--
122	10-3/4 miles southeast	do.	do.	1928	236	6	--
123	10 $\frac{1}{2}$ miles southeast	L. W. Prochnow	-- Houchins	1918	371	6	--
124	do.	do.	do.	--	130	8	0.3
125	9-3/4 miles southeast	Frank Gould	Earl Johnson	Old	65	6	--
126	9 miles east	M. M. Davis	do.	1932	211	6	--
127	9 miles northeast	Ralph Robinson	--	Old	98	5 $\frac{1}{2}$	1
128	10 $\frac{1}{2}$ miles northeast	C. A. Wheatley	Earl Johnson	1937	520	6?	--
129	11 miles northeast	do.	--	--	36	--	0.7
130	do.	D. Fuchs	George Lomach	1913	121	6	--
131	10 $\frac{1}{4}$ miles northeast	do.	do.	1925	73	3	--
132	12 $\frac{1}{2}$ miles northeast	H. T. Fuchs	--	--	125	6	--
133	11 $\frac{1}{4}$ miles northeast	J. J. Fuchs	P. Newman	1905	92	6	1.5
134	10 $\frac{1}{2}$ miles northeast	W. B. Fuchs	--	1913	185	6	--
135	10 $\frac{1}{4}$ miles northeast	G. P. Lester	--	--	253	6	0.3

Well No.	Water level		Method of lift	Use of water	Remarks
	Depth below measuring point (ft.)	Date of measurement a/			
111	55 d/	July 15, 1938	W	D,S	Cased to bottom. Yields 5 gallons a minute. Supply reported rather small.
112	70.8	do.	H	D	Cased to 35 feet. Near well.
113	108 d/	do.	W	D,S,I	Cased to 60 feet. Yields 4 gallons a minute.
114	121	do.	W	D,S	Yields 3 gallons a minute.
115	--	--	W	D,S	
116	--	--	W	D,S,I	Water reported unsuitable for washing clothes.
117	72.8	July 13, 1938	W	D,S	No casing. Yields 4 gallons a minute. Water reported unsuitable for washing clothes.
118	116.9	do.	W	D	No casing. Yields 5 to 8 gallons a minute. Water reported unsuitable for washing clothes.
119	20	do.	H	N	
120	+	do.	Flows	D	In bed of creek. Estimated flow $\frac{1}{2}$ gallon a minute from limestone. Reported to fail during droughts.
121	85 d/	June 15, 1938	W,G	D,S,I	Supply reported rather small during droughts.
122	--	--	W	S	Yields 5 to 7 gallons a minute.
123	291 d/	June 16, 1938	G	S	Cased to 18 feet. Water reported unsuitable for domestic use.
124	14.3	June 15, 1938	H	D	Cased to 4 feet. Reported to fail during droughts.
125	59 d/	July 13, 1938	W,G	D,S	Yields 10 to 12 gallons a minute.
126	140 d/	do.	W	D,S	Cased to 10 feet. Has pumped 12 gallons a minute for 35 minutes without failure. Water reported
127	54.2	July 14, 1938	H	D	Cased to bottom. Water reported unsuitable for washing clothes.
128	--	--	W	D,I	No casing. Yields 2 to 4 gallons a minute.
129	29.6	July 14, 1938	W	D,S,I	Dug well. Water reported unsuitable for washing clothes.
130	--	--	--	D,S	Cased to 45 feet. Cavities reported at 45-121 feet. Yields 10 gallons a minute.
131	54.62	Aug. 8, 1938	W	D,S	Cased to 45 feet. Yields $1\frac{1}{2}$ gallons a minute.
132	--	--	W	D,S	Water reported from sand.
133	34.74	Aug. 8, 1938	H	D	Yield reported 100 gallons a day. Water reported at 60-65 feet.
134	--	--	W	D,S	Cased to 30 feet. Water reported at 30 feet.
135	75.40	Aug. 4, 1938	W	D,S	Cased to 125 feet. Reported to fail during droughts.

Records of wells and springs in Blanco County--Continued

Well No.	Distance from Johnson City	Owner	Driller	Date completed	Depth of well (ft.)	Diameter of well (in.)	Height of measuring point above ground (ft.)
136	10 $\frac{1}{4}$ miles northeast	G. P. Lester	--	--	32	50	2.3
137	9 $\frac{1}{2}$ miles northeast	do.	--	--	98	6	--
138	8-3/4 miles northeast	Edwin Hoppe	--	1870	40	--	1.1
139	do.	G. P. Lester	--	1933	955	8	--
140	10 miles northeast	do.	Earl Johnson	--	30	--	0.7
141	8 miles northeast	do.	do.	1920	210	6	0.6
142	7 $\frac{1}{2}$ miles east	Mrs. Ida Hays	S. Page	1924	52	5 $\frac{1}{2}$	--
143	6-3/4 miles east	W. H. Krowl	Earl Johnson	1924	110	6	1.8
144	6 miles east	Vance Tyson	Chism and Johnson	1930	131	6	--
145	8-3/4 miles southeast	Robert Poenisch	Earl Johnson	1898-1937	169	8	--
146	8 miles southeast	Edwin Herwig	John Spaw	1900	118	6	--
147	7 miles southeast	Clarence Johnson	--	--	Spring	--	--
148	do.	do.	Earl Johnson	Old	40	6	2.7
149	6-3/4 miles southeast	E. W. Hills	--	Old	--	6	--
150	5-3/4 miles southeast	Lewis Dourley	--	--	Spring	--	--
151	6 miles southeast	John Felps	--	--	265	6	0.5
152	6 miles southeast	Louis Danz	--	--	123	6	0.5
153	3 $\frac{1}{2}$ miles southeast	Grace Heirs	--	1898	150+	6	--
154	4 $\frac{1}{4}$ miles east	Lonnie Hardin	--	--	140	6	2.1
155	7 miles northeast	H. Birck	Earl Johnson	1917	252	6	--
156	5 $\frac{1}{2}$ miles northeast	S. W. Hyatt	--	--	Spring	--	--
157	6 $\frac{1}{2}$ miles northeast	Gorden Hyatt	Earl Johnson	--	100	6	--
158	do.	Mrs. L. F. Stribling	--	--	Spring	--	--
159	5 $\frac{1}{2}$ miles northeast	do.	--	--	Spring	--	--
160	4 miles northeast	L. A. Wier	--	--	Spring	--	--
161	3 $\frac{1}{2}$ miles northeast	H. D. Crofts	--	--	Spring	--	--

Well No.	Water level		Method of lift	Use of water	Remarks
	Depth below measuring point (ft.)	Date of measurement			
136	10.18	Aug. 4, 1938	None	N	Dug well. Cased to 6 feet.
137	--	--	W, G	D, S	
138	19.69	Aug. 9, 1938	W, G	--	Dug well. Yields 10 gallons a minute.
139	265 d/	Aug. 8, 1938	None	N	Oil test. No production.
140	8.88	do.	W	D, S	Yields 12 gallons a minute.
141	65.25	do.	W	S	Water reported at 125-205 feet. Yields 10 gallons a minute.
142	22 d/	July 14, 1938	W	D, S	Cased to bottom. Reported to fail when windmill pumps $1\frac{1}{2}$ gallons a minute for 2 hours. Water
143	33.1	do.	H	N	Cased to bottom. Reported unsuitable for washing clothes. Supply reported rather small.
144	124 d/	do.	W	D, S	Cased to 90 feet.
145	143 d/	June 15, 1938	W	D, S, I	Cased to 6 feet. Water reported unsuitable for washing clothes.
146	78 d/	June 17, 1938	H	D, S	Cased to 8 feet. Water reported unsuitable for drinking and washing clothes. Small supply reported.
147	+	June 9, 1938	Flows	D, S	In bank of creek. Estimated flow 18 to 24 gallons a minute from limestone. Temperature 68° F.
148	23.1	do.	H	D, I	Water reported from gravel.
149	22.1	do.	H	--	Cased to 6 feet.
150	+	do.	Flows	D	In bank of creek. Reported flow 80 gallons a minute. Reported never to have failed.
151	138.77	Aug. 19, 1941	W, G	D, S	Supply reported adequate for 2,000 goats.
152	94.04	do.	W	D, S	
153	--	--	W	D, S	
154	106.3	Aug. 4, 1938	G	S	
155	60 d/	do.	W	D, S	
156	+	do.	Flows	D, S	Estimated flow 10 gallons a minute. Reported never to have failed.
157	--	--	W	L, S	Cased to 35 feet. Deepened in 1937 from 65 to 100 feet.
158	+	Aug. 18, 1941	Flows	S	In bed of creek. Measured flow 5 gallons a minute from limestone. Reported never to have failed.
159	+	Aug. 19, 1941	Flows	D, S	In bed of creek. Measured flow 6 gallons a minute from limestone.
160	+	Aug. 11, 1938	Flows	S	In bed of creek. Estimated flow 5 to 10 gallons a minute from limestone. Temperature 70° F.
161	+	Aug. 4, 1938	Flows	D, S	At head of ravine. Measured flow 60 gallons a minute. Reported to have failed in 1908.

Records of wells and springs in Blanco County--Continued

Well No.	Distance from Johnson City	Owner	Driller	Date completed	Depth of well (ft.)	Diameter of well (in.)	Height of measuring point above ground (ft.)
162	3 miles northeast	N. G. Norton	-- Lomach	1913	210	--	0.2
163	1-3/4 miles northeast	J. C. Leonard	Earl Johnson	1938	100	6	0.7
164	2 1/2 miles east	Tom J. Johnson	do.	1936	110	6	--
165	do.	do.	Will Mayfield	1905	65	6	0.6
166	1 1/2 miles east	J. C. Leonard	Earl Johnson	1937	250	6	--
167	2 1/2 miles southeast	J. R. Odorine	do.	--	87	6	1.9
168	1-3/4 miles southeast	Mrs. V. F. Smith	--	--	92	6	--
169	2-3/4 miles southeast	W. S. Crider	E. Lomach	Old	217	6	0.6
170	3 1/4 miles southeast	--	Earl Johnson	1936	460	8	0.5
171	3-3/4 miles southeast	O. R. Gunn	do.	1934	425	8	--
172	5-3/4 miles southeast	R. G. Vecker	--	1890	40	--	2.8
173	6 1/4 miles southeast	A. E. Felps	--	Old	40	--	3.4
174	do.	do.	--	1917	283	6	0.8
186	5 1/2 miles north	T. M. McNatt	George Lomach	1905	171	6	0.5
187	4 miles north	L. A. Wier	Earl Johnson	--	170	--	--
188	2-3/4 miles north	do.	Sidney Johnson	--	82	--	0.7
189	2 1/4 miles north	William Wolf	--	--	30 1/2	6	1
190	1-3/4 miles northeast	Mrs. J.W. Harper	--	--	114	6	1
191	In Johnson City	Mrs. Anna E. Grote	Earl Johnson	1928	92	6	--
192	1-3/4 miles south	G. C. Simmons	--	Old	180	6	0.7
193	3 miles south	W. E. Withers	--	--	180	5	--
194	4 1/2 miles south	John Felps	--	1910	370+	--	0.2
195	5 1/4 miles south	W. D. Glasscock	Earl Johnson	1928	132	8	0.5
196	do.	Anna Felps	--	Old	160	5	1.5
197	do.	do.	--	Old	45	6	0.5
198	4-3/4 miles south	Mrs. F. A. Iglohart	--	Old	165	5	1

Well No.	Water level		Method of lift	Use of water	Remarks
	Depth below measuring point (ft.)	Date of measurement			
162	71.14	Aug. 3, 1938	W	--	
163	79.95	do.	W	D,S	Cased to 30 feet.
164	--	--	W	D,S	Cased to bottom. Water reported from fine-grained white sand at 75 feet.
165	31.28	Aug. 3, 1938	None	N	Water reported from sand at 65 feet.
166	--	--	W	S	Supply reported rather small.
167	12.11	Aug. 4, 1938	W	D,S	
168	60.26	do.	W	D,S	
169	67.25	June 10, 1935	G	S	Supply reported rather small and unsuitable for domestic use.
170	222	do.	None	N	
171	375 d/	do.	W	I	Supply reported rather small and unsuitable for domestic use.
172	29.82	June 9, 1958	H, G	D,S,I	Dug well. Reported to yield 52 gallons a minute. Supplied neighboring farms during drought of 1925.
173	37	do.	H	D	Dug well. Reported to fail during droughts.
174	36	do.	W	S	Water reported unsuitable for domestic use.
186	10.67	July 21, 1941	W	D,S	Cased to 10 feet. Water reported at 32 feet, and in hard blue sandstone at 171 feet.
187	--	--	W, G	D,S	
188	70.30	July 21, 1941	W	S	
189	2.03	do.	H	D,S	Cased to bottom.
190	57.20	do.	H	D,S	Cased to about 60 feet.
191	15.34	Aug. 3, 1938	E	P	Cased to 86 feet. Screen set at 86-87 $\frac{1}{2}$ feet. Capacity of pump 12 gallons a minute.
192	70.60	July 26, 1941	W, G	D,S	Cased to bottom.
193	160 d/	do.	W	D,S	Reported to fail during droughts.
194	157.60	Aug. 7, 1941	W	S	Oil test. No oil production. Has supplied water for 1,500 to 2,000 goats.
195	23.08	July 29, 1941	H	D,S	Supply reported rather small.
196	27.93	do.	W	N	Do.
197	26.01	do.	H	D	Cased to bottom. Supply reported rather small.
198	62.38	Aug. 7, 1941	W	S	Cased to bottom. Supplies 94 head of cattle.

Records of wells and springs in Blanco County--Continued

Well No.	Distance from Johnson City	Owner	Driller	Date completed	Depth of well (ft.)	Diameter of well (in.)	Height of measuring point above ground (ft.)
199	3 $\frac{1}{2}$ miles southwest	W. R. Rawlings	--	Old	270	5	0.5
200	2-3/4 miles south	do.	--	--	60	6	0.2
201	2 $\frac{1}{2}$ miles southwest	D. O. Casparis	--	1905	135	6	0.2
202	2 $\frac{1}{2}$ miles southwest	E. E. Dollahite	--	--	80	5	0.7
203	2 miles southwest	Arthur Rose	G. Gibson	1918	112	6	0.2
204	3/4 mile southwest	Clara Waller	--	1933	1535	8	3
205	1-3/4 miles southwest	J. S. Stevenson	--	Old	123	6	--
206	1 $\frac{1}{2}$ miles west	Mrs. R. L. Green	--	Old	27	36	1.5
207	1 $\frac{1}{2}$ miles northwest	W. A. Hunnicutt	--	1918	94	--	0.5
208	4 miles northwest	J. H. Rosa and Sons	Earl Johnson	--	120	--	--
209	4 $\frac{1}{2}$ miles northwest	do.	--	--	Spring	--	--
210	5 miles north	do.	Willard Sitton	1941	293 $\frac{1}{2}$	5	--
211	5 $\frac{1}{2}$ miles northwest	do.	Earl Johnson	1939	256	6	1
212	6 $\frac{1}{2}$ miles north	do.	George Lomach	1918	100	3	--
213	6 $\frac{1}{4}$ miles northwest	do.	Sultemeier Brothers	Old	160	6	1
214	6 $\frac{1}{2}$ miles northwest	J. J. Stewart	--	Old	21 $\frac{1}{2}$	4	0.2
215	6 $\frac{1}{4}$ miles northwest	Garland Hunnicutt	--	--	30	40	2
216	do.	Alexander Redford	--	1901	76	6	0.5
217	5 $\frac{1}{2}$ miles northwest	Alfred Ahrens	Earl Johnson	Old	43	6	1
218	4 $\frac{1}{2}$ miles northwest	J. H. Rosa and Sons	--	1932	1210	12	1
219	do.	Alfred Ahrens	Earl Johnson	--	279	6	1
220	do.	O. A. Ahrens	do.	1930	120	6	1
221	2-3/4 miles northwest	Irvin Althaus	--	Old	100	6	--
222	3 miles west	E. M. Clett	--	1890	12?	6	--
223	2 $\frac{1}{2}$ miles west	J. Leonard	--	--	61	--	1
224	2 miles southwest	J. G. Stevenson	Earl Johnson	--	101	6	0

Well No.	Water level		Method of lift	Use of water	Remarks
	Depth below measuring point (ft.)	Date of measurement a/			
199	166.72	July 26, 1941	W	S	
200	34.05	do.	W	D,S	
201	155.86	Aug. 11, 1941	W	D,S	Supplies 125 head of stock.
202	29.52	July 26, 1941	W	D,S	
203	64.60	July 15, 1941	W	D,S	
204	18.77	Aug. 25, 1941	None	N	Johnson City Oil Co. No. 1 Well. Oil test. No oil production. Cased to 180 feet. Water from
205	60 d/	July 15, 1941	W	D,S	white sand at 125-145 and 400 feet.
206	10.31	do.	H	D,S	Dug well. Supply reported rather small.
207	32.58	do.	W	S	
208	40 d/	July 22, 1941	W	D,S	Supply reported rather small.
209	+	do.	Flows	S	In bed of creek. Flow reported to vary from 200 to 750 gallons a minute. Water from limestone.
210	--	--	None	N	Cased to 120 feet.
211	106.38	July 22, 1941	W	S	Cased to 6 feet. Supply reported rather small.
212	1 d/	do.	W	D,S	Cased to 5 feet. At headquarters of Rosa Ranch.
213	11.60	do.	W	S	At former headquarters of Rosa Ranch.
214	16.44	July 24, 1941	W	D,S	Supply reported rather small.
215	8.62	Aug. 2, 1941	W	D,I	Dug well. Irrigates 1/8 acre of garden.
216	47.91	July 18, 1941	W	D,S	Supply reported rather small. A tunnel connects this well with nearby dug well.
217	9	do.	W	D,S	
218	58.35	July 22, 1941	W	S	Oil test. No oil production. Water reported at 500 and 1,000 feet. Granite reported at 1,200
219	13	July 18, 1941	W	S	feet.
220	39.20	do.	W	D,S	Cased to 7 feet.
221	--	--	W	D,S	
222	50 d/	July 16, 1941	W	D,S	Cased to 50 feet. Supply reported rather small.
223	51.32	July 15, 1941	W	D,S	Dug to about 45 feet; remainder drilled.
224	88.75	do.	W	D,S	Water reported at 90-96 feet.

Records of wells and springs in Blanco County--Continued

Well No.	Distance from Johnson City	Owner	Driller	Date completed	Depth of well (ft.)	Diameter of well (in.)	Height of measuring point above ground (ft.)
225	3 miles southwest	R. Klappenback, Jr.	Alex. Evans	1916	175	6	0.2
226	3½ miles southwest	R. Klappenback	Earl Johnson	1923	170	6	0.5
227	4 miles southwest	R. Klappenback, Jr.	do.	1925	125	6	0.5
228	5¼ miles southwest	W. D. Glassecock	John Felps	1917	280	5	1
229	6 miles southwest	do.	do.	1917	180	5	0.5
230	7¼ miles southwest	Adolph Steiler	Tom Calhoun	1914	260	5	0.5
231	6 miles southwest	Emil Hartman	--	--	Spring	--	--
232	5-¾ miles southwest	do.	Earl Johnson	1925	284	6	--
233	½ miles southwest	R. A. Lewis	--	Old	50	-	1
234	4¼ miles southwest	C. C. Galloway	Page and Sanders	1907	178	6	0.3
235	3-¾ miles southwest	Herman Jonschke	--	--	30	6	0.5
236	4-¾ miles west	Louis Lindig	--	--	105	--	--
237	3-¾ miles southwest	do.	Earl Johnson	1928	170	6	--
238	3-¾ miles west	Scott Clett	--	--	135	6	--
239	5½ miles northwest	Edwin Sultemeier	Earl Johnson	1929	200+	6	0.5
240	7¼ miles northwest	Henry Crider	--	Old	40	40	--
241	7-¾ miles northwest	A. D. Sultemeier	--	--	Spring	--	--
242	3 miles northwest	do.	--	Old	20	30	0.5
243	8½ miles northwest	J. D. Kent	--	--	Spring	--	--
244	4-¾ miles west	Scott Clett	--	--	--	--	--
245	5½ miles west	C. A. Wiley	--	--	--	--	--
246	6 miles southwest	Louis Lindig	--	1908	99	6	1
247	5½ miles southwest	Ezell Key	--	Old	100	6	1

a/ Plus (+) indicates water level is above ground.

o/ H, hand pump or bucket and rope; W, windmill; T, turbine; S, suction; E, electric motor; G, gasoline engine; number indicates horsepower.

Well No.	Water Level Depth below measuring point (ft.)	Date of measure- ment a/	Method of lift b/	Use of water c/	Remarks
225	122.17	Aug. 11, 1941	None	N	Cased to bottom. Supply reported rather small. Water reported to have sweet taste.
226	37.12	do.	W	S,I	Cased to 125 feet. Supplies 200 head of cattle and 350 goats. Reported that water leaves taste
227	105.64	do.	W	S	Cased to bottom. Water reported from sand at 100-125 feet. Supplies 600 goats and 50 cows. Water has slight "sulphur" taste, is
228	115.14	Aug. 7, 1941	W	S	Cased to 200 feet. Reported unfit for drinking. Has supplied 1,300 goats. Water reported unfit
229	122.3	Aug. 6, 1941	W	S	Cased to 100 feet. Reported unfit for drinking. Known as Stalin well. Supplies 1,650 goats. Water reported
230	203	Aug. 13, 1941	W	D,S	Supply unfit for drinking. Known as Bates well. Reported rather small.
231	+	Aug. 11, 1941	Flows	D,S,I	Supplies 60 head of cattle and 600 goats. Irrigates $\frac{1}{2}$ acre of garden.
232	--	--	W	D,S,I	Cased to 18 feet. Water reported from blue rock at 170-184 feet. Well supplies 520 goats, 27 head of cattle and has supplied 1,000 goats.
233	39.96	Aug. 11, 1941	W	D,S	Supplies 79 head of cattle and 500 goats. Water reported suitable for irrigating tomatoes.
234	145.58	Aug. 12, 1941	W	D,S	Cased to 15 feet. Supplies 100 head of mixed stock. Supply reported rather small.
235	73.30	July 15, 1941	W	D,S	
236	40 d/	do.	W	D,S	
237	60 d/	do.	W,G	D,S	Cased to bottom.
238	60	July 17, 1941	W	S	Supply reported rather small.
239	49.95	July 18, 1941	W	D,S	
240	8 d/	Aug. 2, 1941	H	D	Dug well. Formerly irrigated $\frac{1}{4}$ acre of garden.
241	+	do.	Flows	S	In bank of creek. Estimated flow 7 gallons a minute. Reported never to have failed.
242	11.72	do.	W	I	Dug well. Irrigates 1 acre of garden.
243	+	Aug. 4, 1941	Flows	N	In bed of ravine. Estimated flow $\frac{1}{2}$ gallon a minute. Reported never to have failed.
244	--	--	W	D,S	
245	20 d/	July 16, 1941	W	D,S	
246	51	July 15, 1941	W	D,S	
247	83.69	Aug. 12, 1941	W	D,S,I	Cased to 20 feet. Yields 6 gallons a minute. Wells 247 and 248 supply 700 goats and 15 cows. Irrigates 1/10 acre of garden.

c/ D, domestic; S, stock; I, irrigation; P, public supply; N, not used.
d/ Reported by driller or owner.

Records of wells and springs in Blanco County--Continued

Well No.	Distance from Johnson City	Owner	Driller	Date completed	Depth of well (ft.)	Diameter of well (in.)	Height of measuring point above ground (ft.)
248	5-3/4 miles southwest	Ezell Key	--	Old	143	5	0.5
249	6 1/2 miles southwest	Otto Vecker	Bob Vecker	1913	200	6	1
250	7 miles southwest	Alfred Weirich	--	--	154	6	1
251	7 1/4 miles southwest	Mrs. August Weirich	--	1900	170	6	1
252	do.	Hugo Weirich	George Lemach	1919	128	--	--
253	do.	Adolph Steiler	Alex Evans	1920	400+	--	--
254	7 1/2 miles southwest	do.	Tom Calhoun	1920	225 1/2	5	1
255	9 miles southwest	Mrs. Wm. Sultemeier	--	Old	80	6	0.5
256	8 miles southwest	do.	--	Old	140	--	0.5
257	do.	Mrs. J. V. Gibson	--	1912	140	6	1
258	7 1/2 miles southwest	Victor Striegler	--	--	100	--	1
259	6 1/4 miles west	Annie Brodbeck	--	--	137	--	--
260	7-3/4 miles west	Alex McDougal	--	Old	97	6	1
261	7 1/2 miles west	Rudolph Rech	--	Old	86	6	1
262	7 miles west	Charles Troy	--	--	80	--	0
263	7 1/4 miles west	Otto Rech	--	--	140	6	--
264	7 1/2 miles west	Joe Novian	--	1912	110	--	--
265	7 1/4 miles west	L. J. Dixon	--	--	60	6	1
266	7 1/2 miles northwest	Mrs. Albert Moellendorf	--	--	61	6	1
267	8 miles northwest	Otto Scherer	--	1911	200+	6	--
268	7 1/4 miles northwest	B. W. Scharnhorst	G. Gibson	1914	36 1/2	6	--
269	8 1/4 miles northwest	Chas. H. Lehmann	--	--	Spring	--	--
270	9 1/4 miles northwest	Otto Sultemeier	--	1920	186	6	--
271	9 miles west	H. S. Brodbeck	Ezell Key	1904	120	6	0.5
272	8 1/2 miles west	Bernice Higgins	--	1938	105	6	--
273	9 1/4 miles west	Alfred L. Schmidt	Earl Johnson	1934	94	6	1

Well No.	Water level		Method of lift	Use of water	Remarks
	Depth below measuring point (ft.)	Date of measurement a/			
248	113	Aug. 12, 1941	W	S	Yields 15 gallons a minute. See well 247.
249	147.07	Aug. 6, 1941	W	S,I	Cased to 200 feet. Supplies 30 head of cattle, 13 horses, 600 goats, and irrigates $\frac{1}{4}$ acre of garden.
250	113.18	do.	W	S	Supplies 150 goats, 11 head of cattle and horses. Water reported to have ruined garden in one season.
251	124.67	Aug. 5, 1941	W	D,S,I	Irrigates 1/10 acre ; when used for irrigation of garden.
252	80 d/	do.	W	D,S,I	Cased to bottom. Irrigates $\frac{1}{4}$ acre of garden. Supplies 200 goats, and 25 head of cattle.
253	--	--	W	S	Supplies 1,000 goats.
254	143.32	Aug. 13, 1941	W	D,S	Has supplied over 1,000 goats. Water reported suitable for irrigation.
255	40	Aug. 5, 1941	W	D,S	Supplies 300 goats and 30 cows.
256	61.20	Aug. 6, 1941	W,H	D,S	
257	68.85	July 16, 1941	W,G	D,S	Water reported unfit for washing clothes.
258	41.50	July 15, 1941	W	D,S	
259	50 d/	do.	E	D,S	
260	9.72	July 17, 1941	H	N	Formerly supplied in.
261	36.32	July 18, 1941	H	S	Cased to 7 feet. Supply reported rather small.
262	20.70	do.	W	D,S	
263	50 d/	do.	H	D,S	Cased to 50 feet. Supply reported very plentiful during rainy seasons.
264	30 d/	do.	W	D,S	
265	26.18	July 17, 1941	W	D,S	Cased to bottom.
266	51.47	July 18, 1941	W	D,S	
267	--	--	W	S	
268	75.5d/	July 18, 1941	H	D,S	Cased to 2 feet. Has yielded 22 gallons a minute.
269	+	July 31, 1941	Flows	S	In bank of creek. Estimated flow 10 to 15 gallons a minute.
270	134 d/	July 17, 1941	W	D,S	
271	84	do.	W	D,S	Cased to bottom.
272	--	--	W	D,S	
273	46.55	July 17, 1941	W	S	Cased to 90 feet.

Records of wells and springs in Blanco County--Continued

Well No.	Distance from Johnson City	Owner	Driller	Date completed	Depth of well (ft.)	Diameter of well (in.)	Height of measuring point above ground (ft.)
274	8 miles west	Louis Haun	--	Old	108	--	--
275	8 miles southwest	Elbert Nowotny	George Lomach	1911	112	--	--
276	9 $\frac{1}{2}$ miles southwest	Fritz Deike	Tom Benson	1933	115	6	0.5
277	8 $\frac{1}{4}$ miles southwest	William Lindig	--	1900	110	6	--
278	10 miles southwest	Winchester Kelso	--	Old	250	5	--
279	9 $\frac{1}{4}$ miles southwest	Laurcnce Lange	-- Parker	1910	120	6	0.3
280	9-3/4 miles southwest	Ernest Lange	Herman Bergerman	1901	91	5	0.5
281	10-3/4 miles southwest	M. R. Seymour	Tom Benson	1904	220	5	0.2

Well No.	Distance from Blanco	Owner	Driller	Date completed	Depth of well (ft.)	Diameter of well (in.)	Height of measuring point above ground (ft.)
291	10-3/4 miles northwest	Walter Scherer	--	--	245	5	0.1
293	9-3/4 miles northwest	Henry Maenius	Brigham Barker	1926	200	6	0.5
294	8-3/4 miles northwest	Clarence Kilburn	--	--	260	6	0.5
295	9 $\frac{1}{2}$ miles northwest	Alvin Macnius	Ernest Wilkie	1902	332	5	--
296	9 $\frac{1}{4}$ miles northwest	Emil Stahl	-- Schu	1939	380	5	--
297	9 miles northwest	Louis Maenius	W. M. Neugebauer	1908	424	5	--
298	8 miles west	-- Franklin	--	--	423	5	0
299	7 $\frac{1}{2}$ miles west	Henry Blackburn	--	1900	145	5	1
300	7 miles west	Henry Sauer	S. Page	1920	150	6	0.2
301	6-3/4 miles southwest	Paul Essar	--	Old	100	--	0.3
302	6 miles northwest	T. M. Metcalf	--	--	200	5	--
303	7 miles northwest	-- Weymeier	--	1937	392	6	1

a/ Plus (+) indicates water level is above ground.

b/ H, hand pump or bucket and rope; W, windmill; T, turbine; S, suction; E, electric motor; G, gasoline engine; number indicates horsepower.

Well No.	Water level		Method of lift	Use of water	Remarks
	Depth below measuring point (ft.)	Date of measurement			
274	--	--	W	S	
275	100 d/	July 17, 1941	W	D,S	
276	83.48	Aug. 19, 1941	W	D,S,P	Cased to 80 feet. Supplies 15 to 20 head of cattle. Yields 7 gallons a minute.
277	25 d/	July 16, 1941	W	D,S	Cased to 105 feet. Water reported unsuitable for washing clothes.
278	200 d/	Aug. 8, 1941	W	S	
279	73.63	do.	H	N	Cased to bottom. Water reported unsuitable for irrigation.
280	80	do.	W	N	Cased to 20 feet. Has supplied 50 head of cattle. Water has unpleasant taste.
281	159.29	do.	W	S	Cased to 100 feet. Supplies 200 goats. Water reported unsuitable for irrigation and for washing clothes.

Well No.	Water level		Method of lift	Use of water	Remarks
	Depth below measuring point (ft.)	Date of measurement			
291	18.78	Aug. 8, 1941	W	S	Supplies 150 goats, 6 horses and 4 head of cattle. Water reported unsuitable for drinking, irrigation and for washing clothes.
293	147.97	Aug. 9, 1941	W	S,I	Cased to bottom. Supplies 600 to 700 goats. Irrigates 1/3 acre of garden.
294	51.38	do.	W	S	
295	160 d/	Aug. 8, 1941	W	S	Cased to about 300 feet. Supplies 20 horses, 850 goats and 152 head of cattle. Reported to have unpleasant taste.
296	200 d/	do.	W	S	Cased to 340 feet. Supplies 340 goats.
297	145 d/	do.	W	D,S,I	Cased to bottom. Water reported from cavity at 420-424 feet. Supplies 250 head of cattle.
298	174.24	do.	W	S	Supplies 1,400 goats.
299	77.41	Aug. 21, 1941	W	D,S	Water reported at 140-145 feet. Supplied 165 goats in 1940. Weak well.
300	33.79	do.	W,G	S,I	Yields 215 barrels a day. Supplies 31 head of cattle. Irrigates small garden. Water reported unsuitable for drinking and for washing clothes.
301	24.04	do.	W	D,S,I	Well deepened from 50 feet during drought of 1925.
302	--	--	W	S	Supplies 400 goats, 15 head of cattle and 8 horses.
303	109.46	Aug. 9, 1941	None	N	Cased to about 200 feet. Has supplied 1,000 goats and 30 head of cattle.

c/ D, domestic; S, stock; I, irrigation; P, public supply; N, not used.

d/ Reported by driller or owner.

Records of wells and springs in Blanco County--Continued

Well No.	Distance from Blanco	Owner	Driller	Date completed	Depth of well (ft.)	Diameter of well (in.)	Height of measuring point above ground (ft.)
304	8 $\frac{1}{4}$ miles northwest	-- Zinke	--	--	290	--	--
305	8 $\frac{1}{2}$ miles northwest	Chas. Hollenburger	Tom Benson	1937	280	6	0.7
306	8-3/4 miles northwest	-- Walker	--	--	135	6	0.5
307	7-3/4 miles northwest	Adolph Steiler	--	1910	200±	5	--
308	5 $\frac{1}{2}$ miles northwest	C. A. Delzell	--	1939	280	6	1
309	5 miles northwest	do.	-- Bvars	--	200	--	0.5
310	5 $\frac{1}{2}$ miles west	Peter Smith	-- Kennedy	1921	260	5	1
311	5 miles west	Gus Flugrath	--	--	35 $\frac{1}{2}$	5	1
312	4-3/4 miles west	Tom Byrom	--	--	Spring	--	--
313	4 $\frac{1}{4}$ miles northwest	D. F. Russell	--	--	280	--	--
314	4 $\frac{1}{2}$ miles northwest	do.	-- Kennedy	1939	180	6	--
315	5 $\frac{1}{4}$ miles northwest	Adolph Steiler	--	Old	199	6	1
316	5-3/4 miles northwest	do.	--	--	Spring	--	--
317	5 $\frac{1}{2}$ miles northwest	W. D. Glasscock	-- Kennedy	1939	200±	--	--
318	4-3/4 miles northwest	John C. Neal	--	--	316	5	0
319	3-3/4 miles northwest	Rudolph Leeder	--	--	295	--	--
320	3 $\frac{1}{2}$ miles northwest	do.	Hardy Sitten	--	1400±	5	--
321	3 miles west	Goldwin Smith	Goldwin Smith	1941	29 $\frac{1}{2}$	48	0.2
322	3 miles southwest	John A. Adams	Elbert Williamson	1940	142	5	--
323	3 $\frac{1}{2}$ miles southwest	August Wuest	John Binsky	--	200	5	1
324	4 $\frac{1}{4}$ miles southwest	Leary and Wright	--	1925	196	6	0.5
325	do.	Hugh Martin	--	Old	210	6?	--
326	6 miles southwest	P. W. Gourley	--	Old	100	6	1.2
327	6 $\frac{1}{4}$ miles southwest	W. W. Krueger	--	Old	250	6	--
328	do.	Al. Buchanan	S. Edge	1910	118	7	1.4
329	6 miles southwest	do.	W. M. Neugebauer	Old	60±	6	--

Well No.	Water level		Method of lift	Use of water	Remarks
	Depth below measuring point (ft.)	Date of measurement			
304	200 d/	July 16, 1941	W	S	
305	141.80	do.	W	S	
306	61.88	do.	W	S	
307	150 d/	Aug. 14, 1941	W	S	Has supplied 2,000 goats.
308	182.60	Aug. 19, 1941	W	S	Cased to 234 feet. Has supplied 15 head of cattle and 600 goats. Now supplies 150 head of cattle.
309	106.03	do.	W	S	Supply weak during droughts.
310	52.79	Aug. 5, 1941	W	D,S,I	Cased to 160 feet. Irrigated 1/6 acre of garden.
311	8.08	do.	H	D	
312	+	Aug. 20, 1941	Flows	D	In bank of Blanco River. Measured flow 84 gallons a minute. Reported to fail during droughts.
313	200 d/	Aug. 19, 1941	W	D,S	Supplies 600 goats. Formerly irrigated small garden.
314	160 d/	do.	W	S	Cased to bottom.
315	184.44	do.	W	S	Supply reported rather small.
316	+	Aug. 13, 1941	Flows	S	In bed of creek. Estimated flow 2 gallons a minute. Has supplied 2,000 goats. Reported never
317	--	--	W	S	Supplies 1,550 goats and 41 head of cattle. Known as Red Tail well. to have failed.
318	188.83	Aug. 14, 1941	None	N	Weak well.
319	175 d/	Aug. 19, 1941	W	S	Well has been deepened from original depth of 100 feet. Has supplied 500 goats.
320	--	--	None	N	Oil test. No production. Plugged.
321	27.7	Aug. 21, 1941	H	D	Dug well. Supply reported adequate for one family.
322	75 d/	Aug. 4, 1941	W	D,S	Cased to 14 feet. Water reported at 90-119 feet. Supplies 200 goats and 25 horses. Yields 6 gal-
323	137.76	Aug. 12, 1941	W	S,I	Supplies 600 goats. Irrigates 1/2 acre of garden. Yields 6 gallons a minute.
324	113.20	do.	W	S,I	Irrigates 1/4 acre of garden. Has supplied 1,000 goats. Water reported unfit for drinking.
325	--	--	W	D,S	Yields 5 gallons a minute.
326	21.52	July 11, 1938	V,H	D,S	
327	200 d/	July 8, 1938	G	S	Cased to 20 feet. Water reported unsuitable for washing clothes.
328	39.1	do.	W	D	
329	15 d/	do.	W	D	Cased to 10 feet.

Records of wells and springs in Blanco County--Continued

Well No.	Distance from Blanco	Owner	Driller	Date completed	Depth of well (ft.)	Diameter of well (in.)	Height of measuring point above ground (ft.)
330	4 miles southwest	J. E. Walker	--	Old	360	8	--
331	2½ miles south	Roy Carter	-- Kennedy	Old	446±	6	--
332	1 mile southwest	do.	--	--	Spring	--	--
333	¾ mile southwest	City of Blanco	--	1941	13	--	1
334	¾ mile west	R. P. Thompson	--	--	Spring	--	--
335	½ mile northwest	A. J. Fries	--	Old	105½	4	1
336	¾ mile northwest	Lloyd Jones	-- Johnson	1939	283	--	--
337	1-¾ miles west	J. M. Pickel	--	--	Spring	--	--
338	1½ miles northwest	Kurt Liesmann	--	Old	145	5	0.2
339	1¼ miles northwest	F. B. Jackson	--	Old	22	40	0.5
340	1 mile northwest	R. W. Bindseil	--	Old	98	8	0
341	1½ miles northwest	Alvin Wegner	--	Old	122	6	1.5
342	2 miles northwest	Vernon Spencer	--	Old	110½	4	0
343	1½ miles northwest	E. M. Wallace	--	Old	52½	36	3
344	2 miles northwest	Vernon Spencer	--	1930	86½	8	0.5
345	2½ miles northwest	Alma Brockman	--	--	260±	4	--
346	2-¾ miles north	Wm. Haas	-- Calhoun	1913	253	5½	2
347	3 miles northwest	R. T. Fudge	--	--	Spring	--	--
348	3½ miles northwest	do.	--	1910	205	5	1
349	4 miles north	W. D. Glasscock	-- Kennedy	1939	178	5	0.7
350	5 miles north	do.	Earl Johnson	1925	52	6	0.5
351	5½ miles north	do.	--	Old	47	--	1.5
352	5 miles north	do.	--	1938	1005	12	1
353	4¼ miles north	do.	--	1928	960	12	1
354	2¼ miles northeast	do.	-- Kennedy	1937	162	5- 3/16	--

Well No.	Water level		Method of lift	Use of water	Remarks
	Depth below measuring point (ft.)	Date of measurement a/			
330	--	--	W	D,S	
331	246 d/	June 23, 1938	W	S	Cased to 50 feet. Reported yield 15 to 20 gallons a minute. Water has slight "sulphur" taste.
332	+	June 22, 1938	Flows	S	Measured flow 30 gallons a minute. Reported never to have failed. Temperature 68° F.
333	4.23	July 14, 1941	T, E, 75	P	Dug well, 5 by 8 feet to depth of 5 feet; 6 by 40 feet to 13 feet. Yields 72,000 gallons a day.
334	+	Aug. 20, 1941	Flows	N	In bank of creek. Measured flow 84 gallons a minute.
335	65.52	July 14, 1941	W	D,S	Supply reported rather small.
336	100 d/	Aug. 4, 1941	E	D,S	Cased to 100 feet. Water reported at 68-210 feet.
337	+	do.	Flows	D,S	In bed of creek. Measured flow 126 gallons a minute.
338	23.48	do.	W	D,S	Cased to bottom. Irrigates $\frac{1}{2}$ acre of garden. Supplies 15 head of stock.
339	14.12	do.	G	D,S	Dug well.
340	68	July 14, 1941	W	D,S	
341	75.58	do.	W	D,S	
342	80.10	do.	W	S	
343	24.31	do.	W	D,S	Dug well.
344	60.33	do.	W, G	S	Supply reported rather small. Well was drilled to about 1,000 feet as oil test. Plugged back.
345	--	--	W	S	No casing. Supply reported rather small. No oil production.
346	146	July 14, 1941	G	S	Cased to 150 feet. Supply reported rather small.
347	+	Aug. 13, 1941	Flows	D	In bed of ravine. Reported yield 20 gallons a minute. Reported never to have failed.
348	143.50	do.	W	N	Cased to about 10 feet. Twenty-nine rapid withdrawals with 20-gallon bucket reported to have
349	105.7	Aug. 6, 1941	W	S	Supplies 650 goats; lowered water level 1 foot. Reported able to supply many more. Known as
350	33.32	do.	W	S	Cased to bottom. Supplies 60 head of cattle and horses. Known as Crisswell well.
351	34.50	Aug. 5, 1941	W, G	S	Supplies 440 goats and 20 horses. Known as Jackson well.
352	75.77	Aug. 6, 1941	W	S	D. W. Johnson No. 1 Glasscock. Oil test. No oil production. Cased to 100 feet. Supplies water for 900 to 1,000 goats and 25 horses. See log.
353	54.83	do.	G	N	Robert A. Rodson No. 1 Glasscock. Oil test. No oil production. No casing. Has supplied water for 900 to 1,000 goats. See log.
354	--	--	W	D,S	Reported yield 15 to 20 gallons a minute.

Records of wells and springs in Blanco County--Continued

Well No.	Distance from Blanco	Owner	Driller	Date completed	Depth of well (ft.)	Diameter of well (in.)	Height of measuring point above ground (ft.)
355	3/4 mile north	C. M. Johnson	Earl Johnson	1928	288	--	--
356	1/2 mile north	Blanco Independent School District	--	1934	295	6	0.5
357	In Blanco	G. E. Trainer	Earl Johnson	1937	246	8	2.1
358	do.	C. E. Crist	--	1885	32	--	1
359	1/4 mile southeast	Blanco State Park	--	--	Spring	--	--
360	In Blanco	A. W. Koch	--	1908	27	48	--
361	do.	Fred Bremer	Fred Bremer	1936	27	48	0.5
362	do.	C. Koch, Sr.	--	1913	190	6	--
363	do.	J. H. Seiler	S. Page	1923	300	8	--
364	do.	O. E. West	-- Kennedy	1926	65+	6	--
365	1/2 mile south	Blanco State Park	--	--	Spring	--	--
366	3/4 mile southeast	Alex Nowotny	--	1880	30	36	2.9
367	do.	J. M. Marcolf	--	1880	30	40	2.5
368	do.	A. Ethridge	--	--	Spring	--	--
369	1 1/2 miles southeast	A. F. Saunders	Page and Kennedy	1887	358	7	0.2
370	2-3/4 miles southeast	M. G. Ross	S. Page	1903	160	6	0
371	3 1/4 miles south	Wm. Jonas	do.	1909	296	6	--
372	4 miles south	do.	Hans and Page	1898	180	6	--
373	do.	P. G. Vezey	--	1880	300	8	--
374	4-3/4 miles south	Oscar Jonas	Emil Wegner	1903	209	6	1.8
375	do.	do.	S. Page	1916	220	6	--
376	5 1/2 miles southeast	A. Bruemmer	--	--	87	6	--
377	6 1/4 miles southeast	Henry Bruemmer	--	1913	171	8	--
378	6 1/2 miles south	A. Bruemmer	--	Old	140	8	1.5
379	do.	Frank Wunderlich	John West	1902	72	6	--
380	do.	do.	-- Kennedy	1931	60	6	--

Well No.	Water level		Method of lift	Use of water	Remarks
	Depth below measuring point (ft.)	Date of measurement			
355	120 d/	June 7, 1938	W	D,S,I	Reported yield 10 to 14 gallons a minute.
356	127	June 1, 1938	W	P	Drawdown 10.2 feet after pumping 11 gallons a minute for 35 minutes.
357	58.3	June 3, 1938	H	D	Cased to 34 feet. Reported yield 6 to 10 gallons a minute.
358	26 d/	June 7, 1938	S,E	D	Dug well. No casing. Yields 10 to 15 gallons a minute.
359	+	Aug. 20, 1941	Flows	D	In bed of creek. Measured flow 15½ gallons a minute. Reported never to have failed.
360	25 d/	June 6, 1938	S,E	D,P	Dug well. Cased to bottom. Water reported from gravel.
361	20	June 7, 1938	E	I	Dug well. Reported to have failed in 1957.
362	--	--	W	S,I	Cased to 15 feet. Water reported in gravel. Water reported unfit for washing clothes.
363	?	--	G	I	Cased to 14 feet. Yield reported 20 gallons a minute from sandstone at 280-300 feet.
364	--	--	H	D,S	Cased to 15 feet. Yield reported 2 to 4 gallons a minute.
365	+	Aug. 20, 1941	Flows	D	In bank of river. Measured flow 4 gallons a minute. Reported never to have failed.
366	15.2	June 17, 1938	W,H	D,S,I	Dug well. Cased to bottom.
367	26.7	do.	W,H	D,S,I	Dug well.
368	+	June 7, 1938	Flows	D,S,I	In bank of river. Flow reported 14 to 16 gallons a minute. Reported never to have failed. Temperature 68½° F.
369	210	June 22, 1938	W	S,I	Cased to 8 feet. Deepened from 158 feet.
370	31.4	do.	W	D,S,I	Cased to 10 feet. Supplied community during drought of 1925.
371	160 d/	do.	W	D,S,I	Cased to 10 feet. Yield reported 3 gallons a minute.
372	110 d/	do.	W	D,S	Deepened in 1906 from 126 to 130 feet. Yield reported 3 to 4 gallons a minute.
373	--	--	W	D,S	Cased to 7 feet. Yield reported 6 to 10 gallons a minute.
374	38.5	July 8, 1938	W	S	Deepened in 1916 from 118 to 209 feet. Yield reported 3 gallons a minute.
375	--	--	W	D,S,I	Yield reported 2 gallons a minute.
376	37 d/	July 7, 1938	W	D,S,I	Cased to 8 feet. Yield reported 3 to 5 gallons a minute.
377	150 d/	do.	W	D,S	Cased to 15 feet. Supply reported rather small.
378	60.4	July 8, 1938	W	D,S,I	Supply reported rather small.
379	19 d/	do.	W	D,S,I	Cased to 19 feet. Yield reported 2 gallons a minute. Water has slight "sulphur" taste.
380	25 d/	do.	H	D	Cased to 20 feet. Water has unpleasant taste at times.

Records of wells and springs in Blanco County--Continued

Well No.	Distance from Blanco	Owner	Driller	Date completed	Depth of well (ft.)	Diameter of well (in.)	Height of measuring point above ground (ft.)
381	6 miles south	Hugo Beckman	Wm. Neugebauer	1907	114	8	--
382	6½ miles south	H. F. Cass	do.	Old	60	6	0.8
383	6-¾ miles south	E. Liesmann	-- Kennedy	1924	85	6½	0.3
384	6-¾ miles southeast	W. W. Krueger	John West	Old	160	6¼	--
385	7 miles south	Edward Koch	Otto Vogel	1888	134	8	--
386	7¼ miles south	A. K. Knowl	--	1885	123	6	--
387	8½ miles south	Edward Koch	John West	1902	306	8	--
388	9¼ miles south	J. S. Phillips	--	--	89	8	1.1
389	9½ miles south	Joe Neugebauer	W. M. Fisher	Old	210	6	--
390	9-¾ miles south	do.	--	Old	190	6	1
391	11 miles south	Berthold Specht	--	1931	1430	12½	0
401	6 miles northeast	W. D. Glasscock	James Johnson	1927	300+	6	0.5
402	4½ miles northeast	H. A. Beckman	John Page	1893	59	6	--
403	4¼ miles northeast	W. D. Glasscock	Earl Johnson	1925	400	5- 3/16	--
404	3 miles northeast	E. W. Walker	--	1931	1078	--	--
405	2 miles southeast	Henry Triesch	Alex Evans	1917	201	6	0.8
406	do.	-- Freideleson	do.	--	126	6	0.5
407	do.	G. A. Price, Jr.	--	Old	110	6	0.7
408	2½ miles southeast	E. F. Bagby	Brigham Barker	1925	237	6	--
409	2-¾ miles southeast	Polk Morrissey	-- Campbell	1895	48	4	0.8
410	2½ miles southeast	do.	--	1935	354	--	--
411	2½ miles southeast	do.	S. Page	Old	255	6	0.8
412	2 miles southeast	Charles Lindeman	-- Kennedy	Old	227	6	0
413	2¼ miles southeast	A. C. Lindeman	do.	Old	190	6	0
414	3 miles southeast	W. O. Watson	--	--	99	6	--

Well No.	Water level		Method of lift	Use of water	Remarks
	Depth below measuring point (ft.)	Date of measurement			
381	54 d/	July 8, 1938	W	D,S,I	Cased to 20 feet.
382	29.01	do.	W	D,S	
383	32.5	July 6, 1938	W	D,I	Cased to 16 feet.
384	40 d/	July 7, 1938	W,G	D,S,I	Yield reported 5 to 6 gallons a minute. Formerly supplied cotton gin. Deepened in 1890 from 96 to
385	54 d/	July 6, 1938	W	D,S,I	Cased to 8 feet. Deepened from 125 to 130 feet. to 134 feet.
386	20 d/	do.	W	S,I	Cased to 20 feet. Deepened from 80 to 123 feet.
387	256 d/	do.	G	D,S	Cased to 7 feet.
388	72.78	July 7, 1938	W	D,S,I	Yield reported 5 gallons a minute.
389	190 d/	do.	W	S	
390	157	do.	W	D,S	Cased to 6 feet. Yield reported 6 to 7 gallons a minute.
391	215.15	Aug. 27, 1941	None	N	Theodore Hicks No. 1 Specht oil test. No production.
401	140.3	Aug. 7, 1941	W	S	Supplies 380 goats, 63 head of cattle and 7 horses. Known as Marv Edwards place.
402	34 d/	June 9, 1938	W,G	S,I	Cased to 6 feet. Supplied 100 head of cattle during drought. Water reported unsuitable for
403	--	--	W,G	S	Cased to bottom. Supplies 200 head of stock. Water reported unsuitable for
404	--	--	--	--	Meeks & Smith No. 1 Walker oil test. domestic use. No production. See log.
405	23.32	June 2, 1938	W	D,S	Water reported from sand at about 195 feet. Deepened from 60 to 201 feet.
406	42.83	do.	W	S	Yield reported 2 gallons a minute.
407	30 d/	June 3, 1938	G	D,I	Cased to 50 feet. Yield reported 3 gallons a minute.
408	132 d/	June 23, 1938	H	S	Cased to 5 feet.
409	37.2	June 22, 1938	H	D,S	Dug well.
410	--	--	None	N	Foe & Nixon No. 1 Morrissey oil test. No production. See log.
411	129.5	June 22, 1938	W	S,I	Cased to 60 feet. Deepened in 1913 from 130 to 255 feet. Water reported unsuitable for domestic use.
412	129.28	June 1, 1938	W	D,S	Deepened from 150 feet in 1907.
413	3.23	do.	W	D,S	Supply reported rather small.
414	--	June 22, 1938	W	D,S,I	

Records of wells and springs in Blanco County--Continued

Well No.	Distance from Blanco	Owner	Driller	Date completed	Depth of well (ft.)	Diameter of well (in.)	Height of measuring point above ground (ft.)
415	2-3/4 miles southeast	Herman Wuest	Jess Page	Old	206	6	1.3
416	3 miles southeast	Charles E. Crist	--	1940	1332	12	2.5
417	do.	do.	--	1939	976	12	2
418	do.	do.	--	1939	725	--	--
419	3 1/2 miles southeast	Dan Reeves	--	--	Spring	--	--
420	3 1/2 miles southeast	H. Hohenberger	--	1916	290	8	--
421	7 1/4 miles southeast	Twin Sisters School	--	Old	98	6	--
422	do.	Ed. Bindseil	--	1890	61 1/2	42	0.1
423	7 1/2 miles southeast	Wm. Schuetz	--	Old	85+	6 1/4	--
424	do.	do.	--	--	42 1/2	48	2.1
425	7-3/4 miles southeast	Fritz Koch	John West	--	124	6	--
426	8 1/2 miles southeast	do.	Otto Vogel	1902	320	8	1.1
427	8-3/4 miles southeast	B. J. Studer	--	1937	383	8	--
428	8 miles southeast	Adolph Kneupper	--	Old	350	8	1.3
429	do.	L. W. Chick	--	--	85	6	--
430	7-3/4 miles southeast	T. G. Fleming	--	Old	90	6	1.3
431	7 1/4 miles southeast	Otto Mueller	Otto Vogel	1893	82	6	--
432	6-3/4 miles southeast	Joe Preiss	S. Page	1905	95	6	--
433	do.	Charles Preiss	Jess and John Page	1907	82	6	0
434	7 1/2 miles southeast	G. C. Artz	Otto Vogel	1893	100	6	--
435	do.	Gus Artz	do.	1888	155	6	--
436	7 miles southeast	Frank P. Preiss	S. Page	Old	68	6	--

a/ Plus (+) indicates water level is above ground.

b/ H, hand pump or bucket and rope; W, windmill; T, turbine; S, suction; E, electric motor; G, gasoline engine; number indicates horsepower.

Well No.	Water level		Method of lift	Use of water	Remarks
	Depth below measuring point (ft.)	Date of measurement a/			
415	22	June 22, 1938	W,G	D,S	
416	14.60	Aug. 27, 1941	None	N	E. L. Nixon No. 3 Crist oil test. No production. See log.
417	12.61	do.	None	N	E. L. Nixon No. 2 Crist oil test. No production. Well reported plugged back to 700 feet. See log.
418	--	--	None	N	E. L. Nixon No. 1 Crist oil test. No production. Well plugged to surface. See log.
419	+	June 6, 1938	Flows	D,S	Estimated flow $1\frac{1}{2}$ to 2 gallons a minute. Reported not to have failed in 50 years.
420	160 d/	July 11, 1938	W,G	D,S,I	Cased to 7 feet. Yield reported 10 gallons a minute. Water reported unsuitable for washing
421	50 d/	July 6, 1938	W	D,S,I	clothes.
422	32.18	July 1, 1938	W,H	D,S	Dug well.
423	45 d/	do.	W	D,S,I	Reported to fail during droughts. Water reported unsuitable for washing clothes.
424	7.82	do.	H	D	Dug well. Supply reported rather small during droughts. Water reported unsuitable for washing
425	18 d/	do.	W,G	D,S,I	Cased to 16 feet. clothes.
426	181	July 7, 1938	W	D,S	Cased to 14 feet. Supply reported rather small.
427	150 d/	July 6, 1938	W	D,S	Cased to 160 feet. Yield reported 8 to 10 gallons a minute.
428	257	July 7, 1938	W	--	Cased to 10 feet. Supply reported rather small. Water reported unsuitable for washing clothes.
429	40 d/	July 1, 1938	W	D	
430	73.25	June 24, 1938	W,G	D,S	
431	--	--	W,G	D,S,I	Cased to 12 feet. Supply reported rather small.
432	--	--	W	D,S,I	Water reported unsuitable for washing clothes.
433	11	June 23, 1938	W	D,S,I	Cased to 10 feet. Yield reported 10 to 15 gallons a minute.
434	39.20	do.	W	D,S,I	Cased to 10 feet. Supply reported rather small.
435	45 d/	do.	W	D,S,I	Cased to 5 feet.
436	--	--	W	D,S	Cased to 8 feet.

c/ D, domestic; S, stock; I, irrigation; P, public supply; N, not used.
d/ Reported by driller or owner.

Records of wells and springs in Blanco County--Continued

Well No.	Distance from Blanco	Owner	Driller	Date completed	Depth of well (ft.)	Diameter of well (in.)	Height of measuring point above ground (ft.)
437	7 miles southeast	Weinstrom Estate	J. E. Page	Old	80	6	--
438	6 miles southeast	D. C. Flenikin	do.	1909	150	6	--
439	5-3/4 miles southeast	-- Rust	-- Page	1890	125	6	1.2
440	5 miles southeast	A. M. Cox	R. E. Page	Old	150	6	--
441	4-3/4 miles southeast	A. J. Waggoner	--	--	Spring	--	--
442	4 1/2 miles southeast	A. S. Cox	J. E. Page	1898	58	6	--
443	4 1/4 miles southeast	-- Johnson	do.	1904	194	6 1/2	2
444	5 miles east	J. R. Buckner	J. D. Buckner	1905	180	6	--
445	4 miles east	C. E. Crist	--	Old	35	--	2.9
446	4 1/2 miles east	J. A. Sharp	--	Old	225	6	--
447	5 1/4 miles east	H. Massey	--	Old	116	6	0.8
448	5 miles northeast	Arthur L. Nelson	-- Kennedy	1939	185	6	--
449	do.	do.	S. Page	1909	314	6	0.5
450	5 1/4 miles northeast	do.	--	Old	86	6	--
451	do.	do.	-- Kennedy	1940	130	5-3/16	--
452	5-3/4 miles northeast	do.	do.	1940	372	6	0.3
453	6 1/2 miles northeast	do.	--	Old	65	6	1
454	5 1/2 miles northeast	Alvin Beckman	Earl Johnson	Old	231	6	1.2
455	6 1/4 miles northeast	W. N. Greenhaw	S. Page	1925	199	6	1
456	7-3/4 miles northeast	M. T. Burchett	--	--	Spring	--	--
457	do.	do.	--	--	Spring	--	--
458	8 1/4 miles northeast	Arthur L. Nelson	--	--	Spring	--	--
459	9 miles northeast	do.	--	--	76	6	1
460	10 miles northeast	-- Singleton	--	1914	120	7	--

Well No.	Water level		Method of lift	Use of water	Remarks
	Depth below measuring point (ft.)	Date of measurement			
437	60 d/	July 12, 1938	W	D,S	Deepened in 1901 from 65 to 80 feet.
438	--	--	W	D,S	Cased to 30 feet.
439	95	June 8, 1938	W	D,S	Supply reported rather small during droughts.
440	55 d/	June 7, 1938	W	D,S	Cased to 12 feet.
441	+	do.	Flows	S	In bed of stream. Temperature $67\frac{1}{2}^{\circ}$. Known as Cove Spring.
442	55	do.	W	D,S,I	Cased to 4 feet. Yield reported 10 to 14 gallons a minute. Deepened from 40 to 58 feet.
443	180	do.	H	D	Cased to 15 feet. Yield reported 10 to 14 gallons a minute.
444	145 d/	June 15, 1938	W	D,S	Cased to 8 feet. Water reported at 80 and 175 to 180 feet.
445	31.8	June 7, 1938	H	D	Dug well.
446	--	--	W	D,S,I	
447	93.9	June 14, 1938	W,S	D,S	Cased to 15 feet.
448	100 d/	Aug. 26, 1941	W	D,S,I	Cased to 20 feet. Supplies 200 goats, 10 head of cattle and irrigates garden.
449	71.10	do.	None	N	Cased to 20 feet. Water reported at 200 feet and from 300 to 314 feet. Water reported to have bitter taste. Well yields 10 gallons a minute.
450	40 d/	June 14, 1938	W,G	D,S,I	
451	120 d/	Aug. 26, 1941	W	D,S,I	Cased to 20 feet. Water reported from gravel and sand at 120 to 122 feet. Irrigates garden.
452	113.20	do.	W	S	Cased to 270 feet. Water reported from sand at 212-215 feet. Supplies 500 goats. Reported ample for 1,000 goats. Water has bitter taste. Known as
453	57.93	do.	W	D,S,I	Supplies 400 to 500 goats. Known as Bernhard well. Supply reported ample for 1,000 goats. Known as
454	1.5	June 9, 1938	W	S	Water reported unsuitable for Seiler place. domestic purposes.
455	86.7	do.	W	S,I	Cased to 170 feet. Water for domestic purposes supplied by nearby 19-foot well.
456	+	June 17, 1938	Flows	D	In bank of creek. Reported never to have failed.
457	+	do.	Flows	D	In bank of creek. Reported to fail during droughts.
458	+	do.	Flows	S	In bank of creek. Reported never to have failed. Known as Monarch Spring.
459	64	Aug. 26, 1941	W	S	Has supplied 1,000 goats.
460	100 d/	June 15, 1938	W	D,S	Cased to 6 feet. Supply reported rather small.

Records of wells and springs in Blanco County--Continued

Well No.	Distance from Blanco	Owner	Driller	Date completed	Depth of well (ft.)	Diameter of well (in.)	Height of measuring point above ground (ft.)
461	10 miles northeast	Wm. Harper	Boston Furr	1913	426	--	--
462	7 miles east	Anna Jones	Earl Johnson	1908	150	6	--
463	6 $\frac{1}{4}$ miles east	J. D. Dodson	--	1928	235	6	1.4
464	7 miles east	E. E. Hoskinson	-- Koch	1924	180	8	--
465	6 miles east	J. D. Dodson	-- Kennedy	1934	385	5	--
466	do.	do.	--	1928	249	--	--
467	6-3/4 miles east	Irvin Higgins	--	Old	100	8	--
468	7 $\frac{1}{4}$ miles east	A. J. Cole	--	Old	--	--	--
469	7-3/4 miles east	-- Burdett	--	Old	--	8	0.5
470	7 miles southeast	H. M. Stone	-- Kennedy	Old	204	6	0.2
471	5-3/4 miles southeast	J. D. Dodson	Earl Johnson	1936	250	6	--
472	do.	do.	--	1930	152	4	--
473	7-3/4 miles southeast	Herman Schlameus	J. E. Page	1888	140	6	--
474	7 $\frac{1}{2}$ miles southeast	do.	do.	1909	208	6	--
475	7 $\frac{1}{4}$ miles southeast	R. B. Linnartz	--	1912	120+	--	--
476	7 $\frac{1}{2}$ miles southeast	do.	--	Old	120+	6	--

a/ Plus (+) indicates water level is above ground.

b/ H, hand pump or bucket and rope; W, windmill; T, turbine; S, suction; E, electric motor; G, gasoline engine; number indicates horsepower.

Well No.	Water level		Method of lift	Use of water	Remarks
	Depth below measuring point (ft.)	Date of measurement a/			
461	--	--	None	S	
462	--	--	W, G	D, S	Cased to bottom.
463	126	June 15, 1938	H	D, S	Cased to 30 feet. Supply reported rather small.
464	--	--	W	D, S	Cased to 170 feet.
465	--	--	W, G	S	Cased to 85 feet. Well fills 18,000-gallon tank in 40 hours.
466	--	--	W, G	D, S	Cased to 65 feet. Supply reported rather small.
467	--	--	W	D, S, I	
468	--	--	W	D, S, I	
469	166.5	June 14, 1938	W	S	
470	198	--	W	D, S, I	Cased to 162 feet. Supply reported rather small during droughts.
471	210 d/	June 15, 1938	G	D, S	Cased to bottom.
472	--	--	W	D, S	Cased to 60 feet.
473	38 d/	July 12, 1938	W	D	Cased to 3 feet. Deepened to 140 feet in 1909.
474	155 d/	do.	W, G	S	Yield reported 20 gallons a minute.
475	--	--	H, W	D, S	Water has slight "sulphur" taste, is reported unsuitable for washing clothes.
476	--	--	W	D, S	Well deepened to present depth in 1911.

c/ D, domestic; S, stock; I, irrigation; P, public supply; N, not used.
d/ Reported by driller or owner.

Table of Drillers' Logs, Blanco County, Texas

Thickness (feet)		Depth (feet)		Thickness (feet)		Depth (feet)	
<u>Driller's log of well 352</u>				<u>Driller's log of well 353--Continued</u>			
W. D. Glasscock, 5 miles north of Blanco.				White limestone - - - 28 528			
Shale - - - - -	70		70	Brown limestone - - -	7		535
Sand, water - - - -	40		110	Gray limestone - - -	25		560
White sand - - - - -	20		130	Sandy brown limestone -	3		563
Blue shale - - - - -	10		140	Sandy gray limestone -	2		565
White limestone - - -	80		220	Sandy brown limestone -	5		570
Sand, water - - - - -	15		235	Sandy gray limestone -	152		722
Red rock - - - - -	100		335	Broken white limestone-	13		735
Blue shale- - - - -	25		360	Gritty gray limestone -	20		755
Red gumbo - - - - -	11		371	Broken white limestone-	55		790
Gray limestone - - -	91		462	Sandy gray limestone -	158		948
Brown limestone - - -	15		477	Oil sand, water	12		960
Gray limestone - - -	106		583	<u>Driller's log of well 404</u>			
Sandy brown limestone -	14		597	E. W. Walker, 3 miles northeast of Blanco.			
Sandy gray limestone,				Surface materials - - -	10		10
water - - - - -	37		634	Yellow clay - - - - -	8		18
Sardy gray limestone -	351		985	Blue clay - - - - -	46		64
Soft brown limestone -	10		995	Hard blue clay - - - -	16		80
Hard gray limestone,				Sand, water - - - - -	12		92
hole full of water -	10		1005	Blue shale - - - - -	86		178
CASING RECORD: 81 feet of 10-inch and				Shells - - - - -	57		235
406 feet of 8 $\frac{1}{2}$ -inch casing.				Hard shale- - - - -	90		325
<u>Driller's log of well 353</u>				Gray limestone - - -	95		420
W. D. Glasscock, 4 $\frac{1}{2}$ miles north of Blanco.				Brown limestone - - -	40		430
Soil - - - - -	2		2	Pink limestone - - -	40		500
Gravel - - - - -	6		8	Red shale, some shells			
Gray limestone - - -	33		41	and flint - - - - -	135		635
Sand, water - - - - -	8		49	Brown shale and shells-	5		640
Gray limestone - - -	26		75	Limestone, shells, and			
Sand, water - - - - -	15		90	black shale- - - - -	249		889
White limestone and hard				Hard limestone and shells	11		900
shells - - - - -	10		100	Black shale - - - - -	178		1078
Rock - - - - -	10		110	CASING RECORD: 462 feet of 8 $\frac{1}{2}$ -inch,			
Sand, water - - - - -	2		112	640 feet of 6-5/8-inch, and 900 feet of			
Blue rock - - - - -	8		120	5-3/16-inch casing.			
Blue shale - - - - -	10		130	<u>Driller's log of well 410</u>			
White limestone - - -	90		220	Polk Morrissey, 2 $\frac{1}{2}$ miles southeast of			
Sand, water - - - - -	4		224	Blanco.			
Hard red rock - - - -	96		320	Soil, gravel, and shell	30		30
Blue shale - - - - -	6		326	Brown limestone, silicate			
Hard white limestone -	2		328	and some sulphur - - -	10		40
Red gumbo - - - - -	7		335	Light-colored limestone	10		50
Hard blue rock - - - -	17		352	Firm drab-colored			
Blue shale- - - - -	7		359	limestone - - - - -	10		60
Hard blue limestone- -	40		399	Brown limestone - - -	10		70
Sandy gray limestone -	6		405	Dark-colored limestone-	40		110
Gritty brown limestone-	25		430	Light yellow limestone			
Sandy white limestone -	8		433	and shell - - - - -	10		120
Hard gray limestone -	7		445	Limestone, shell- - -	60		180
Brown limestone - - -	25		470	(Continued on next page)			
Gray limestone - - -	10		480				
Brown limestone - - -	20		500				

Table of Drillers' Logs, Blanco County -- Continued

		Thickness (feet)	Depth (feet)			Thickness (feet)	Depth (feet)
<u>Driller's log of well 410--Continued</u>				<u>Driller's log of well 416--Continued</u>			
Dark-colored, highly siliceous limestone -	20		200	Gray limestone, water -	48		408
Thin dark-colored formation, slight show of gas, and light-colored limestone -	5		205	Pink limestone - - -	27		435
Hard dark-colored and pink limestone - -	33		238	Gray limestone - - -	25		460
Dark-colored limestone, and drab-colored highly siliceous particles -	20		258	Pink limestone - - -	36		496
Dark brown, highly siliceous materials -	10		268	Gray limestone - - -	5		501
Fine-grained dark brown materials - - - -	10		278	Brown shale - - - -	21		522
Light-colored siliceous limestone - - - -	10		288	Gray limestone - - -	3		525
Calcitic and siliceous limestone, show of gas	17		305	Brown shale - - - -	3		528
Blue gumbo, show of gas	18		323	Gray limestone - - -	2		530
Gritty blue sand - - -	7		330	Gray shale - - - -	22		552
Hard and siliceous gray limestone, show of gas	5		354	Black limestone - - -	21		573
CASING RECORD: 335 feet of 8-inch casing.				Sandy limestone - - -	22		595
<u>Driller's log of well 416</u>				<u>Driller's log of well 417</u>			
Charles E. Crist, 3 miles southeast of Blanco.				Gray shale - - - -	5		600
Soil - - - - -	3		3	Sandy limestone - - -	4		604
Gravel - - - - -	12		15	Blue shale - - - -	2		606
Yellow clay - - - -	3		18	Light blue shale - - -	21		627
Limestone, shells - -	17		35	Gray shale - - - -	10		637
Gray shale - - - - -	13		48	Gray limestone - - -	11		648
Calcareous shale - -	37		85	Blue shale - - - -	21		669
Blue shale - - - - -	4		89	Blue limestone - - -	6		675
Gray limestone - - -	11		100	Blue shale - - - -	99		774
Gray shale - - - - -	5		105	Blue limestone - - -	4		778
Calcareous shale - -	63		168	Shale - - - - -	24		802
Blue gumbo - - - - -	4		172	Broken limestone - - -	209		1011
Limestone, water - -	12		184	Pyrite - - - - -	2		1013
Blue shale - - - - -	15		197	Broken limestone - - -	46		1059
Limestone, shells - -	23		220	Gray shale - - - -	9		1063
Gray limestone - - -	20		240	Blue limestone - - -	59		1107
Blue shale - - - - -	3		243	Blue shale - - - -	62		1169
Gray limestone - - -	43		286	Hard shale - - - -	2		1171
Blue shale - - - - -	2		288	Blue shale - - - -	9		1180
Gray limestone - - -	16		304	Blue limestone - - -	10		1190
Blue gumbo - - - - -	22		326	Gray shale - - - -	12		1202
Blue limestone - - -	8		334	Gray limestone - - -	89		1298
Dry sand - - - - -	5		339	Hard materials - - -	54		1352
Blue shale - - - - -	6		345	CASING RECORD: 505 feet of 8 ¹ / ₂ -inch, 625 feet of 6-inch, and 1082 feet of 5-inch casing.			
Gray limestone - - -	9		354	<u>Driller's log of well 417</u>			
Blue gumbo - - - - -	6		360	Charles E. Crist, 3 miles southeast of Blanco.			
				Black soil - - - - -	2		2
				Gravel - - - - -	3		5
				Gray limestone - - -	26		31
				Blue gumbo - - - - -	14		45
				Gray limestone - - -	15		60
				Light gray limestone -	48		108
				Gray shale - - - - -	4		112
				Broken limestone - - -	55		167
				Blue limestone - - -	6		173
				Blue gumbo - - - - -	7		180
				Blue limestone - - -	6		186
				Blue shale - - - - -	4		190
				(Continued on next page)			

Table of Drillers' Logs, Blanco County -- Continued

		Thickness (feet)	Depth (feet)			Thickness (feet)	Depth (feet)
<u>Driller's log of well 417--Continued</u>				<u>Driller's log of well 418--Continued</u>			
Gray limestone	- - -	10	200	Gray limestone	- - -	5	114
Blue limestone	- - -	25	225	Blue gumbo-	- - -	25	139
Sandy limestone	- - -	60	285	Light gray limestone	- - -	20	159
Blue shale-	- - -	55	340	Blue gumbo-	- - -	22	131
Gray limestone	- - -	30	370	Brown limestone	- - -	5	185
Blue shale-	- - -	22	392	Gray limestone	- - -	12	198
Brown limestone	- - -	30	422	Brown limestone, water-	- - -	14	212
Pink limestone	- - -	18	440	Porous brown limestone-	- - -	9	221
Brown shale	- - -	95	535	Dark gray limestone-	- - -	13	234
Pink limestone	- - -	55	590	Dark brown limestone	- - -	11	245
Dark blue limestone-	- - -	30	620	Brown limestone	- - -	52	297
Dark blue shale	- - -	250	870	Gray limestone, water-	- - -	5	302
Broken limestone-	- - -	50	920	Dark-colored limestone-	- - -	15	317
Blue limestone	- - -	56	976	Blue gumbo-	- - -	27	344
CASING RECORD: 300 feet of 8 $\frac{1}{2}$ -inch, 450 feet of 6-inch, and 600 feet of 5-inch casing.				Dark gray limestone-	- - -	36	380
				Sandy brown limestone	- - -	9	389
				Dark gray limestone-	- - -	28	417
				Brown limestone	- - -	77	494
				Pink limestone	- - -	12	506
<u>Driller's log of well 418</u>				Brown rock-	- - -	10	516
Charles E. Crist, 3 miles southeast of Blanco.				Red clay	- - -	17	533
Black soil-	- - -	2	2	Brown shale	- - -	43	576
Gravel-	- - -	12	14	Blue limestone	- - -	21	597
Yellow clay	- - -	8	22	Dark blue shale	- - -	128	725
Gray limestone	- - -	16	38	CASING RECORD: 400 feet of 8 $\frac{1}{2}$ -inch and 600 feet of 6-inch casing.			
Blue limestone	- - -	11	49				
Porous dark-colored limestone	- - -	60	109				

Partial analyses of water from wells and springs in Blanco County, Texas

Analyzed by the Work Projects Administration at The University of Texas under the direction of Dr. E. P. Schoch, Director of the Bureau of Industrial Chemistry, and F. W. Lohr and W. W. Hastings, Chemists, U. S. Department of the Interior, Geological Survey. Nitrate and fluoride determined by F. W. Lohr and W. W. Hastings. Results are in parts per million.

Well No.	Owner	Depth of well (ft.)	Date of collection	Total dissolved solids (calc.)	Calcium (Ca)	Magnesium (Mg)	Sodium and Potassium (Na + K) (calc.)	Bicarbonate (HCO ₃)	Sulfate (SO ₄)	Chloride (Cl)	Nitrate (NO ₃)	Fluoride (F)	Total hardness as CaCO ₃ (calc.)
1	Mrs. W. L. Hardin	40	July 30, 1941	532	109	51	21	415	7	110	30	--	481
2	Lon R. Hardin	Spring	do.	424	91	41	20	506	3	6.0	8.6	--	395
3	Mrs. W. O. Davis, Sr.	Spring	do.	359	34	38	2.8	421	10	10	7.0	--	369
c/ 4	Grote Estate	200	July 31, 1941	694	66	107	55	671	54	73	1.0	2.8	606
c/ 5	A. R. Grote	200	do.	450	122	23	20	427	31	42	2.0	--	399
6	Grote Estate	110	do.	463	93	54	5.1	432	31	35	3.0	--	473
7	do.	73	do.	505	37	59	21	433	27	37	34	--	461
8	Dan Crowmover	40	July 30, 1941	439	81	43	39	421	39	65	10	-	400
9	do.	130	do.	412	37	43	7.6	470	14	21	3.0	0.1	415
10	J. M. West	150	do.	397	73	43	17	451	12	24	1.0	--	380
11	Mrs. Gus Sulzemeier	225	July 31, 1941	1,455	206	103	119	409	443	151	227	0	938
c/ 12	Mrs. Mary T. Smith	104	do.	2,500	273	296	39	573	197	307	1,100	1.2	1,913
13	C. W. Freer	Spring	Aug. 4, 1941	435	--	--	--	464	27	41	2.0	--	--
14	H. N. Lunday	Spring	Aug. 2, 1941	657	145	34	51	220	25	230	14	--	501
16	Julia Sulzemeier	Spring	July 31, 1941	437	100	54	9.2	494	25	23	23	--	473
18	Kurt Eckert	30	do.	539	103	71	11	512	42	65	40	-	564
19	A. W. Sulzemeier	212	July 30, 1941	739	133	40	3.7	354	27	36	265	0.2	634
20	Carl C. Smith	134	July 23, 1941	484	93	55	12	432	27	55	0	--	474
21	J. M. West	15	Aug. 13, 1941	549	115	44	36	433	31	75	3.4	--	467
22	W. C. Haynes	Spring	July 29, 1941	426	124	19	17	464	16	17	5.0	--	337
23	Clifford Haynes	44	July 30, 1941	443	36	20	66	476	23	13	1.0	--	297
24	W. C. Haynes	100	July 29, 1941	359	66	38	19	366	12	28	16	--	324
25	A. P. Haynes	175	July 28, 1941	409	--	--	--	360	27	48	0.5	--	--
26	Carl C. Smith	Spring	do.	460	93	51	16	433	20	38	2.0	--	441
27	do.	123	do.	454	90	53	11	451	20	43	10	--	443
28	do.	220	do.	459	93	51	9.4	439	20	40	30	--	441
29	do.	150	do.	503	--	--	--	445	31	33	30	--	--

a/ Sodium and potassium less than 5 parts per million.
 b/ Nitrate less than 20 parts per million.

c/ Analyses of selected wells are given in milligram equivalents per liter on page 55.

Partial analyses of water from wells and springs in Blanco County--Continued

Results are in parts per million

Well	Owner	Depth of well (ft.)	Date of collection	Total dissolved solids (calc.)	Calcium (Ca)	Magnesium (Mg)	Sodium and Potassium (Na + K) (calc.)	Bicarbonate (HCO ₃)	Sulfate (SO ₄)	Chloride (Cl)	Nitrate (NO ₃)	Fluoride (F)	Total hardness as CaCO ₃ (calc.)
	30 Carl C. Smith	130	July 28, 1941	555	-	-	-	512	23	46	23	-	-
c/	31 do.	116	do.	612	85	71	55	488	93	68	0	-	439
	32 do.	85	do.	452	82	62	12	537	2	30	0	-	458
	33 Fred Sultemeier	82	July 31, 1941	816	116	100	2.8	354	42	111	270	-	702
c/	34 J. N. Crider	105	July 24, 1941	1,475	297	98	12	239	31	290	600	-	1,145
	35 do.	165	do.	414	72	46	24	415	31	32	5.0	-	368
	36 Mrs. L. F. Stribling	171	do.	464	76	43	39	397	69	34	8.0	-	367
	38 W. R. Crider	263	do.	465	72	43	48	445	58	24	1.0	-	357
	39 do.	222	do.	422	68	43	36	427	39	24	2.0	0.2	347
	40 Carl C. Smith	Spring	July 28, 1941	373	98	21	18	384	22	22	3.0	0.4	333
	41 do.	66	do.	461	108	46	9.7	537	12	16	5.0	-	458
	42 Blanco County	Spring	July 29, 1941	464	68	38	63	488	25	26	4.0	-	329
	43 Louis Ebeling	Spring	July 25, 1941	518	122	53	6.0	561	19	36	6.4	-	523
	44 do.	47	do.	530	114	63	5.3	592	20	33	4.0	-	544
	45 Max Ebeling	Spring	Aug. 18, 1941	404	81	52	6.9	494	8	13	b/	0.1	417
	46 Louis Ebeling	82	July 25, 1941	492	130	38	8.1	537	17	27	7.4	-	484
	47 Leck M. Haynes	100	do.	513	-	-	-	470	27	45	15	-	-
	48 W. A. Woolsey	300+	July 23, 1941	816	125	72	61	458	266	56	9.8	0.7	610
c/	49 do.	174	do.	280	15	35	41	214	58	24	2.0	-	181
	50 J. H. Rosa and Sons	Spring	July 22, 1941	321	86	14	21	348	15	12	2.0	0.2	274
	51 Mrs. L. F. Stribling	150±	July 23, 1941	452	72	45	40	409	50	41	3.0	-	362
	53 S. T. Desmond Estate	145	July 25, 1941	434	95	34	27	439	23	31	7.8	-	376
	54 Louis Ebeling	240	do.	374	82	36	15	409	13	25	1.5	-	352
	55 Charles P. Haynes	332	July 28, 1941	196	12	17	39	116	25	45	0	0.4	100
	56 Max Ebeling	31	Aug. 18, 1941	423	109	36	4.1	451	19	24	8.4	-	422
	57 do.	Spring	do.	366	96	31	4.8	415	8	22	b/	-	369
	58 W. M. Zick	96	July 25, 1941	423	-	-	-	378	27	26	26	-	-
	59 Christian Birck	101	do.	417	91	42	7.4	403	31	27	21	-	401

a/ Sodium and potassium less than 5 parts per million.

b/ Nitrate less than 20 parts per million.

c/ Analyses of selected wells are given in milligram equivalents per liter on page 55.

Partial analyses of water from wells and springs in Blanco County--Continued

Results are in parts per million

Well	Owner	Depth of well (ft.)	Date of collection	Total dissolved solids (calc.)	Calcium (Ca)	Magnesium (Mg)	Sodium and Potassium (Na + K) (calc.)	Bicarbonate (HCO ₃)	Sulfate (SO ₄)	Chloride (Cl)	Nitrate (NO ₃)	Fluoride (F)	Total hardness as CaCO ₃ (calc.)
60	Ernest Fischenger	111	July 25, 1941	438	94	47	4.4	409	50	28	14	-	429
61	Mrs. L. F. Stribling	480+	July 23, 1941	330	66	38	11	366	3	31	0.8	-	324
62	do.	69	do.	409	85	35	24	409	27	24	13	-	356
63	John Grisham	98	do.	333	82	24	13	342	20	18	8.4	-	305
64	Frank Clarke	80	Aug. 10, 1938	377	-	-	-	397	15	20	b/	-	-
66	James Perry	Spring	July 25, 1941	401	80	31	27	360	35	25	26	0.3	329
67	do.	37	do.	391	77	34	25	372	27	26	19	-	331
68	Max Ebeling	133	Aug. 18, 1941	359	96	28	6.0	403	10	21	b/	0.4	358
69	Carl Kast	119	Aug. 11, 1938	411	118	22	14	445	15	23	b/	0.2	383
c/ 71	J. J. Rivera	65	Aug. 10, 1938	896	134	93	37	445	58	141	214	-	717
72	H. H. Weinheimer	175	Aug. 9, 1938	385	-	-	-	390	26	18	b/	-	-
73	Mrs. L. Wiedebusch	140	do.	455	120	31	3.7	366	18	60	42	-	429
74	Oscar Robinson	Spring	Aug. 10, 1938	488	-	-	-	506	17	26	6.4	-	-
75	do.	Spring	do.	404	109	28	9.0	427	18	23	6.9	-	387
76	do.	60	do.	490	118	52	2.1	555	16	27	2.5	-	507
77	do.	115	do.	551	101	51	27	366	139	53	b/	0.4	461
78	do.	171	do.	214	28	29	14	189	21	29	b/	0.2	188
79	Peter Shelley	78	Aug. 11, 1938	486	107	53	8.6	536	14	30	9.3	-	485
80	do.	98	do.	549	123	58	6.4	549	17	53	22	-	546
81	J. W. Smith	159	do.	526	114	44	23	439	30	77	22	-	467
c/ 84	J. J. Fuchs	190	Aug. 9, 1938	340	90	31	a/	390	12	13	2.1	0.4	354
85	Gus Lechow	Spring	Aug. 5, 1938	442	99	41	19	500	16	21	b/	-	415
86	B. Croft	27	Aug. 10, 1938	371	84	43	2.1	427	13	19	b/	-	386
87	Otto Wiedebusch	185	do.	397	-	-	-	403	16	16	15	-	-
88	Mrs. Lee Burnam	Spring	Aug. 11, 1938	421	107	38	3.0	458	16	20	12	0.2	423
89	C. A. Duncan	225	Aug. 10, 1938	426	101	41	2.3	403	66	18	b/	0.3	420
90	do.	90	do.	362	96	32	a/	390	21	19	1.9	-	375
91	R. L. Youngblood	97	Aug. 5, 1938	439	-	-	-	415	41	26	b/	-	-
92	Victor Wenmohs	-	Aug. 4, 1938	1,447	320	46	84	458	156	226	390	0.1	988

a/ Sodium and potassium less than 5 parts per million.

b/ Nitrate less than 20 parts per million.

c/ Analyses of selected wells are given in milligram equivalents per liter on page 55.

Partial analyses of water from wells and springs in Blanco County--Continued

Results are in parts per million

Well	Owner	Depth of well (ft.)	Date of collection	Total dissolved solids (calc.)	Calcium (Ca)	Magnesium (Mg)	Sodium and Potassium (Na + K) (calc.)	Bicarbonate (HCO ₃)	Sulfate (SO ₄)	Chloride (Cl)	Nitrate (NO ₃)	Fluoride (F)	Total hardness as CaCO ₃ (calc.)
93	J. B. Menmoth	180	Aug. 5, 1938	523	126	29	22	390	37	47	70	-	433
c/94	Armin Schrader	151	do.	1,194	241	34	80	299	45	167	480	-	741
95	A. L. Young	126	July 15, 1938	415	110	30	5.8	415	12	25	28	-	398
96	Federal Joint Stock Land Bank	62	do.	436	104	39	a/	384	19	27	58	-	422
97	J. O. Hollingsworth	124	do.	485	95	49	15	415	18	50	54	-	440
111	Coke Hollingsworth	65	do.	421	103	26	15	372	16	23	55	-	366
112	John Fasel	105	do.	346	87	31	4.6	378	15	17	5.6	-	344
113	Carl Kauss	133	do.	360	84	37	2.3	384	21	16	11	0.1	363
114	Gus Stieler	142	do.	434	118	27	12	433	16	37	11	0	407
115	Hugo Fuchs	85	Aug. 9, 1938	390	-	-	-	403	18	22	b/	-	-
116	H. M. Ulrich	175	July 14, 1938	1,636	178	7.5	364	305	822	114	0	1.2	475
117	Ed Auge	81	July 13, 1938	890	139	65	3.2	360	66	114	276	-	740
118	Frank Gould	170	do.	368	99	29	2.5	397	29	13	b/	-	368
119	C. L. Ragland	40	do.	2,413	518	64	119	397	279	338	900	0	1,559
120	M. F. Whitmer	Spring	do.	326	95	22	1.8	366	14	13	b/	0	329
121	J. Q. Gaines	160	June 15, 1938	370	96	25	3.7	354	15	21	30	-	340
123	L. W. Prochnow	371	June 16, 1938	714	136	28	17	378	223	27	47	0.3	582
c/124	do.	130	do.	510	154	7.5	12	342	15	34	120	-	415
125	Frank Gould	65	July 13, 1938	-	-	-	-	-	15	16	23	-	-
126	M. M. Davis	211	do.	532	128	44	2.3	415	132	22	b/	1.9	503
127	Ralph Robinson	98	July 14, 1938	506	120	43	2.8	455	14	63	34	-	498
128	C. A. Wheatley	520	do.	346	86	36	a/	397	11	16	1.8	0.2	362
129	do.	36	do.	616	104	71	a/	403	14	41	188	-	554
130	D. Fuchs	121	Aug. 3, 1938	424	-	-	-	445	12	27	b/	-	-
131	do.	78	do.	514	96	60	15	451	22	79	20	-	487
132	H. T. Fuchs	125	do.	463	108	47	a/	458	25	29	30	-	464
133	J. J. Fuchs	92	do.	333	81	34	a/	354	12	17	15	0.2	341
134	W. B. Fuchs	185	do.	422	89	51	1.8	439	41	23	0	-	431
135	G. P. Lester	253	Aug. 4, 1938	328	72	40	1.2	384	14	12	b/	-	344
136	do.	32	do.	554	60	80	34	525	49	36	27	0.4	479

a/ Sodium and potassium less than 5 parts per million.

b/ Nitrate less than 20 parts per million.

c/ Analyses of selected wells are given in milligram equivalents per liter on page 55.

Partial analyses of water from wells and springs in Blanco County--Continued

Results are in parts per million

Well	Owner	Depth of well (ft.)	Date of collection	Total dissolved solids (calc.)	Calcium (Ca)	Magnesium (Mg)	Sodium and Potassium (Na + K) (calc.)	Bicarbonate (HCO ₃)	Sulfate (SO ₄)	Chloride (Cl)	Nitrate (NO ₃)	Fluoride (F)	Total hardness as CaCO ₃ (calc.)
137	G. P. Lester	98	Aug. 4, 1938	392	-	-	-	403	13	22	6.6	-	-
138	Edwin Hovre	40	Aug. 9, 1938	843	166	53	42	421	49	110	216	-	633
140	G. P. Lester	30	Aug. 8, 1938	443	113	46	a/	519	12	14	3.3	0.1	474
141	do.	210	do.	468	132	41	a/	537	12	16	2.6	0	498
142	Mrs. Ida Hays	52	July 14, 1938	568	146	29	20	458	30	40	73	-	483
143	W. H. Krowl	110	do.	1,559	249	122	34	372	136	130	705	-	1,125
144	Vance Tyson	131	do.	339	66	37	10	329	22	22	20	0.1	318
145	Robert Poenisch	169	June 15, 1938	2,667	511	201	15	336	1,750	22	b/	2.4	2,104
146	Edwin Horwig	118	June 17, 1938	1,065	194	93	17	323	571	31	b/	-	867
147	Clarence Johnson	Spring	June 9, 1938	231	57	15	9.0	27	20	16	12	0.1	204
148	do.	40	do.	335	97	21	a/	329	25	17	12	-	328
149	E. W. Hills	-	do.	342	-	-	-	348	20	18	b/	-	-
150	Lewis Dourley	Spring	do.	325	85	23	4.6	317	20	14	22	0.1	309
151	John Felps	265	Aug. 19, 1941	699	136	70	67	384	253	42	b/	1.8	628
152	Louis Danz	123	do.	742	148	62	17	366	307	28	b/	-	623
153	Grace Heirs	150±	Aug. 4, 1938	250	46	29	8.7	244	16	13	12	0.2	233
154	Lonnie Hardin	140	do.	252	-	-	-	232	17	24	b/	-	-
155	H. Birck	252	do.	272	70	23	3.7	268	15	28	b/	0.3	269
156	S. W. Hyatt	Spring	do.	454	100	50	8.7	531	3	18	7.7	-	456
157	Gordon Hyatt	100	Aug. 9, 1938	622	134	66	a/	537	33	47	73	0.3	606
158	Mrs. L. F. Stribling	Spring	Aug. 18, 1941	331	-	-	-	354	9	18	b/	-	-
159	do.	Spring	Aug. 19, 1941	421	106	30	19	464	13	25	b/	-	338
160	L. A. Wier	Spring	Aug. 11, 1938	442	-	-	-	464	16	25	b/	-	-
161	H. D. Crofts	Spring	Aug. 4, 1938	411	105	41	a/	470	12	19	2.5	0.2	430
162	N. G. Norton	210	Aug. 3, 1938	433	88	40	23	427	16	35	21	0.1	384
163	J. C. Leonard	100	do.	383	99	34	a/	378	29	34	b/	0.2	385
164	Tom J. Johnson	110	do.	533	101	51	19	403	28	56	80	-	461
165	do.	65	do.	547	120	53	11	494	30	54	36	0.2	518
166	J. C. Leonard	250	do.	451	-	-	-	421	33	38	b/	-	-
167	J. R. Odorine	87	Aug. 4, 1938	520	-	-	-	488	29	36	17	-	-
c/168	Mrs. V. F. Smith	92	do.	694	136	56	16	336	119	70	132	0.6	569

a/ Sodium and potassium less than 5 parts per million.

b/ Nitrate less than 20 parts per million.

c/ Analyses of selected wells are given in milligram equivalents per liter on page 55.

Partial analyses of water from wells and springs in Blanco County--Continued

Results are in parts per million.

Well	Owner	Depth of well (ft.)	Date of collection	Total dissolved solids (calc.)	Calcium (Ca)	Magnesium (Mg)	Sodium and Potassium (Na + K) (calc.)	Bicarbonate (HCO ₃)	Sulfate (SO ₄)	Chloride (Cl)	Nitrate (NO ₃)	Fluoride (F)	Total hardness as CaCO ₃ (calc.)
171	O. R. Gunn	425	June 10, 1938	2,984	564	213	43	372	1,956	23	b/	1.5	2,286
172	R. G. Vecker	40	June 9, 1938	296	81	22	a/	293	22	17	9.7	-	294
173	A. F. Felps	40	do.	352	93	29	a/	354	41	15	b/	-	353
174	do.	288	do.	320	62	25	14	165	116	22	b/	-	255
186	T. M. McNatt	171	July 21, 1941	533	105	34	45	384	22	80	58	0.4	401
187	L. A. Wier	170	do.	474	113	51	0.5	525	20	27	4.0	-	491
188	do.	82	do.	473	84	55	23	512	18	30	11	-	439
189	William Wolf	30 ¹ / ₂	do.	280	45	42	4.4	317	13	7.0	12	1.0	286
190	Mrs. J. W. Harper	114	do.	355	78	30	13	354	18	11	31	-	320
c/191	Mrs. Anna E. Grote	92	Aug. 3, 1938	435	88	43	14	378	70	28	6.4	0.4	397
192	G. C. Simmons	190	July 26, 1941	411	123	19	4.6	390	8	28	36	0	387
193	W. E. Withers	180	do.	442	116	27	6.2	336	104	21	3.0	0.2	402
c/194	John Felps	870±	Aug. 7, 1941	2,666	454	28	32	317	1,775	19	b/	1.5	2,070
195	W. D. Glasscock	132	July 29, 1941	327	71	34	5.3	311	31	23	10	-	316
197	Anna Felps	45	do.	290	6	31	1.0	293	27	18	3.0	-	294
c/198	Mrs. F. A. Iglehart	165	Aug. 7, 1941	369	85	35	3.9	342	62	15	b/	-	357
199	W. R. Rawlings	270	July 26, 1941	418	85	32	27	366	69	17	8.0	0.4	345
200	do.	60	do.	1,896	369	105	73	336	1,158	17	8.6	0.7	1,355
201	D. O. Casparis	185	Aug. 11, 1941	574	148	17	9.4	281	26	22	214	-	440
202	F. E. Dellahite	80	July 26, 1941	338	92	20	5.5	305	18	24	28	-	313
203	Arthur Rose	112	July 15, 1941	326	64	43	1.8	354	27	16	0.5	0.1	337
205	J. S. Stevenson	123	do.	423	86	46	11	415	35	28	13	-	403
206	Mrs. R. L. Green	27	do.	444	94	45	8.3	397	27	35	40	-	417
207	W. A. Hunnicutt	94	do.	365	68	37	15	342	20	16	41	-	323
208	J. H. Rosa and Sons	120	July 22, 1941	491	92	55	9.7	421	25	44	58	-	459
209	do.	Spring	do.	399	122	17	9.4	409	15	28	7.0	-	375
211	do.	256	do.	445	38	29	95	378	66	26	5.0	-	213
212	do.	100	do.	396	100	23	23	403	13	33	6.0	-	344
213	do.	160	do.	1,162	142	45	240	305	27	555	2.0	0.6	543

a/ Sodium and potassium less than 5 parts per million. c/

b/ Nitrate less than 20 parts per million.

Analyses of selected wells are given in milligram equivalents per liter on page 55.

Partial analyses of water from wells and springs in Blanco County--Continued

Results are in parts per million.

Well	Owner	Depth of well (ft.)	Date of collection	Total dissolved solids (calc.)	Calcium (Ca)	Magnesium (Mg)	Sodium and Potassium (Na + K) (calc.)	Bicarbonate (HCO ₃)	Sulfate (SO ₄)	Chloride (Cl)	Nitrate (NO ₃)	Fluoride (F)	Total hardness as CaCO ₃ (calc.)
214	J. J. Stewart	21½	July 24, 1941	756	136	43	87	421	81	18½	14	-	517
215	Garland Hunnicutt	30	Aug. 2, 1941	651	130	30	56	384	123	48	75	-	449
216	Alexander Redford	76	July 18, 1941	2,175	419	121	70	354	355	331	705	-	1,544
217	Alfred Ahrens	48	do.	438	92	36	22	317	58	74	0	-	377
218	J. H. Rosa and sons	1,210	July 22, 1941	214	57	8.3	17	250	7	0	2.0	-	177
219	Alfred Ahrens	279	July 18, 1941	138	17	9.5	25	122	8	18	0.7	-	81
220	O. A. Ahrens	120	do.	511	110	53	17	573	17	26	6.0	-	493
221	Irwin Althaus	100	July 15, 1941	580	-	-	-	439	25	52	78	-	-
222	E. M. Clett	122	July 16, 1941	328	50	47	5.5	311	27	18	28	-	319
223	J. Leonard	61	July 15, 1941	698	-	-	-	354	73	93	120	-	-
224	J. G. Stevenson	101	do.	641	122	19	90	439	112	58	24	-	382
225	R. Klappenback Jr.	175	Aug. 11, 1941	2,440	544	111	49	354	1,544	17	b/	1.4	1,818
226	R. Klappenback	170	do.	390	98	16	34	403	22	22	b/	0.2	310
227	R. Klappenback Jr.	125	Aug. 6, 1941	1,548	288	107	52	366	388	31	b/	2.4	1,161
228	W. D. Glasscock	280	Aug. 7, 1941	3,276	578	223	112	433	2,123	25	b/	1.8	2,363
229	do.	180	Aug. 6, 1941	1,548	288	107	52	366	838	31	b/	2.4	1,161
230	Adolph Steiler	260	Aug. 13, 1941	1,470	236	141	35	372	814	58	b/	3.0	1,167
231	Emil Hartman	Spring	Aug. 11, 1941	292	57	35	10	348	8	11	b/	0.3	287
232	do.	284	do.	550	94	53	40	500	100	17	b/	0.6	452
233	R. A. Lewis	50	do.	391	91	28	11	323	24	21	57	-	342
234	C. C. Galloway	178	Aug. 12, 1941	476	94	53	7.6	409	96	24	b/	-	453
235	Herman Jenschke	80	July 15, 1941	354	80	24	9.2	226	20	42	68	0.2	300
236	Louis Lindig	105	do.	670	-	-	-	378	39	52	169	-	-
237	do.	170	do.	486	106	46	11	439	27	42	38	-	453
238	Scott Clett	133	Aug. 17, 1941	459	70	47	38	348	42	83	8.0	-	369
239	Edwin Sulzemeier	200+	July 18, 1941	525	22	13	167	323	62	100	20	-	108
240	Henry Crider	40	Aug. 2, 1941	576	99	24	75	372	54	55	86	-	345

a/ Sodium and potassium less than 5 parts per million.

b/ Nitrate less than 20 parts per million

c/ Analyses of selected wells are given in milligram equivalents per liter on page 55.

49

Partial analyses of water from wells and springs in Blanco County--Continued

Results are in parts per million.

Well	Owner	Depth of well (ft)	Date of collection	Total dissolved solids (calc.)	Calcium (Ca)	Magnesium (Mg)	Sodium and Potassium (Na + K) (calc.)	Bicarbonate (HCO ₃)	Sulfate (SO ₄)	Chloride (Cl)	Nitrate (NO ₃)	Fluoride (F)	Total hardness as CaCO ₃ (calc.)
241	A. D. Sulzemeier	Spring	Aug. 2, 1941	439	74	54	19	390	24	70	5.0	0.6	408
243	J. D. Kent	Spring	Aug. 4, 1941	337	49	9.5	62	159	35	77	25	0.7	161
244	Scott Clett	-	July 16, 1941	439	-	-	-	476	15	12	7.0	-	-
245	C. A. Wiley	-	do.	408	-	-	-	415	23	15	9.0	-	-
c/246	Louis Lindig	99	July 15, 1941	580	98	64	16	421	27	53	110	-	509
c/247	Fzell Key	100	Aug. 12, 1941	616	123	55	7.6	403	154	77	1.0	-	534
c/249	Otto Vecker	200	Aug. 6, 1941	928	196	29	43	250	31	94	412	-	608
250	Alfred Weirich	154	do.	2,085	318	173	76	268	1,061	135	188	1.5	1,506
251	Mrs. August Weirich	170	do.	811	149	73	25	360	270	96	21	-	675
252	Hugo Weirich	128	Aug. 5, 1941	365	98	30	1.6	384	23	23	b/	-	368
254	Adolph Steiler	225 $\frac{1}{2}$	Aug. 13, 1941	848	116	98	31	366	378	45	b/	-	690
255	Mrs. William Sulzemeier	80	Aug. 5, 1941	798	162	52	33	342	355	28	b/	-	617
256	do.	140	Aug. 6, 1941	559	164	23	0.2	403	58	34	82	-	504
257	Mrs. J. V. Gibson	140	July 16, 1941	3,082	517	184	163	171	2,026	106	0.5	1.2	2,048
258	Victor Striegler	100	July 15, 1941	478	-	-	-	378	27	38	53	-	-
259	Annie Brodbeck	137	do.	837	102	76	100	506	27	119	214	-	567
260	Alex McDougal	97	July 17, 1941	549	115	66	2.5	586	27	30	20	-	561
261	Rudolph Rech	86	July 18, 1941	504	112	60	1.2	580	27	18	1.2	-	527
262	Charles Troy	80	do.	240	82	4.6	4.8	250	15	7.0	4.0	-	223
263	Otto Rech	140	do.	415	82	40	18	409	15	18	41	-	369
264	Joe Novian	110	do.	556	114	54	4.6	427	25	38	110	-	508
265	L. J. Dixon	60	do.	855	175	58	21	390	54	97	258	-	676
266	Mrs. Albert Moellendorf	61	do.	525	112	43	16	390	31	56	75	-	457
267	Otto Scherer	200+	do.	661	144	40	34	334	54	106	94	0.4	524
268	B. W. Scharnhorst	86 $\frac{1}{2}$	do.	693	122	37	75	464	53	65	108	-	457
269	Ches. H. Lehmann	Spring	July 31, 1941	452	118	6.8	54	500	7	12	8.0	-	324

a/ Sodium and potassium less than 5 parts per million. c/ Analyses of selected wells are given in milligram equivalents per liter on page 55.
 b/ Nitrate less than 20 parts per million.

1
6
1

Partial analyses of water from wells and springs in Blanco County--Continued

Results are in parts per million.

Well	Owner	Depth of well (ft.)	Date of collection	Total dissolved solids (calc.)	Calcium (Ca)	Magnesium (Mg)	Sodium and Potassium (Na + K) (calc.)	Bicarbonate (HCO ₃)	Sulfate (SO ₄)	Chloride (Cl)	Nitrate (NO ₃)	Fluoride (F)	Total hardness as CaCO ₃ (calc.)
270	Otto Sulzemeier	186	July 17, 1941	1,532	294	77	81	409	247	212	420	-	1,053
271	H. S. Brodbeck	120	do.	525	110	40	11	317	23	50	135	-	439
272	Bernice Higgins	105	do.	502	126	37	6.7	464	15	25	64	-	468
273	Alfred L. Schmidt	94	do.	432	-	-	-	445	15	21	10	-	-
274	Louis Haun	108	do.	783	75	74	75	237	77	105	236	-	490
275	Elbert Nowotny	112	do.	1,057	146	107	90	372	174	365	0.5	0.5	806
276	Fritz Deike	115	Aug. 19, 1941	1,024	188	92	26	342	407	137	3.5	1.7	847
277	Wm. Lindig	110	July 16, 1941	555	-	-	-	189	42	81	162	-	-
278	Winchester Kelso	250	Aug. 8, 1941	3,157	550	224	97	281	2,045	102	b/	1.4	2,298
279	Laurence Lange	120	do.	2,993	583	186	66	342	1,930	46	14	-	2,224
281	M. R. Seymour	220	do.	2,707	369	225	149	342	1,737	59	b/	-	1,848
291	Walter Sherer	245	do.	424	103	25	15	329	31	33	55	-	361
293	Henry Maenius	200	Aug. 9, 1941	832	162	62	29	372	232	69	94	0.8	658
294	Clarence Kilburn	260	do.	871	140	62	69	427	96	105	189	0.4	603
295	Alvin Maenius	332	Aug. 8, 1941	2,090	283	162	152	329	1,196	135	b/	-	1,375
296	Emil Stahl	380	do.	920	119	102	37	262	463	68	b/	1.7	718
297	Louis Maenius	424	do.	2,687	393	218	133	384	1,679	75	b/	-	1,830
298	-- Franklin	423	do.	2,363	396	161	114	336	1,428	99	b/	-	1,654
299	Henry Blackburn	145	Aug. 21, 1941	674	112	72	22	415	234	30	b/	-	579
300	Henry Sauer	150	do.	787	165	64	15	403	307	37	b/	1.6	674
301	Paul Essar	100	do.	534	147	15	17	348	31	41	112	0.3	429
302	T. M. Metcalf	200	Aug. 18, 1941	3,173	530	236	101	305	2,112	39	2.0	3.2	2,296
c/305	Charles Hollenburger	280	July 16, 1941	2,444	454	121	135	384	1,428	79	6.0	1.6	1,630
307	Adolph Steiler	200±	Aug. 14, 1941	2,741	536	143	103	305	1,766	40	b/	2.5	1,928
308	C. A. Delzell	280	Aug. 19, 1941	2,095	395	152	43	415	1,267	34	0	-	1,614
309	do.	200	do.	1,036	175	99	13	275	588	24	0.5	1.3	846
c/310	Peter Smith	260	Aug. 5, 1941	3,339	578	263	86	275	2,354	20	b/	2.5	2,525
311	Gus Flugrath	33½	do.	353	108	16	a/	323	22	14	34	0.2	335
312	Tom Byrom	Spring	Aug. 20, 1941	287	68	21	12	275	25	18	8.0	-	258
313	D. F. Russell	280	Aug. 19, 1941	310	74	30	5.1	336	18	18	0	0.3	308
316	Adolph Steiler	Spring	Aug. 13, 1941	320	70	31	14	378	7	12	b/	0.3	304

a/ Sodium and potassium less than 5 parts per million. c/ Analyses of selected wells are given in milligram equivalents per liter on page 55.
 b/ Nitrate less than 20 parts per million.

Partial analyses of water from wells and springs in Blanco County--Continued

Results are in parts per million.

Well	Owner	Depth of well (ft.)	Date of collection	Total dissolved solids (calc.)	Calcium (Ca)	Magnesium (Mg)	Sodium and Potassium (Na + K) (calc.)	Bicarbonate (HCO ₃)	Sulfate (SO ₄)	Chloride (Cl)	Nitrate (NO ₃)	Fluoride (F)	Total hardness as CaCO ₃ (calc.)
317	W. D. Glasscock	200±	Aug. 6, 1941	2,020	462	101	10	244	1,293	34	b/	-	1,572
319	Rudolph Leeder	295	Aug. 19, 1941	1,007	192	66	44	336	492	28	19	1.3	751
321	Goldwin Smith	29½	Aug. 21, 1941	195	53	11	4.8	177	23	11	b/	-	179
c/322	John A. Adams	142	Aug. 4, 1941	359	119	15	11	390	8	14	14	-	359
323	August Wuest	200	Aug. 12, 1941	539	90	54	23	342	139	9.0	3.0	0.4	449
324	Leary and Wright	196	do.	2,287	433	154	55	366	1,447	16	b/	1.8	1,714
325	Hugh Martin	210	July 11, 1938	278	-	-	-	305	10	9	b/	-	-
326	P. W. Gourley	100	do.	378	89	33	a/	348	66	12	1.0	0.8	379
327	W. W. Krueger	250	July 8, 1938	1,453	271	119	11	281	896	16	0	1.9	1,166
328	Al. Buchanan	118	do.	278	-	-	-	281	16	16	b/	-	-
329	do.	60±	do.	410	104	17	9.0	256	21	20	113	-	331
c/330	J. F. Walker	360	July 11, 1938	305	85	21	4.1	329	10	13	10	-	298
331	Roy Carter	446±	June 23, 1938	999	189	98	a/	403	501	13	b/	2.1	875
332	do.	Spring	June 22, 1938	344	97	15	15	354	15	13	15	0	304
c/333	City of Blanco	13	July 14, 1941	125	23	9.5	10	98	13	11	10	0.5	96
334	R. P. Thompson	Spring	Aug. 20, 1941	363	100	18	14	360	25	12	17	-	321
335	A. J. Fries	105½	July 14, 1941	1,352	263	73	59	305	525	101	180	1.4	960
336	Lloyd Jones	283	Aug. 4, 1941	1,570	237	145	47	305	965	18	6.0	2.2	1,189
337	J. M. Pickel	Spring	do.	328	100	17	4.1	348	18	18	b/	-	320
338	Kurt Liesmann	145	do.	401	106	14	27	354	31	34	15	-	324
339	F. B. Jackson	22	do.	306	91	11	9.4	275	24	22	14	-	272
340	R. W. Bindseil	98	July 14, 1941	304	50	29	13	177	35	26	64	0.5	243
341	Alvin Wegner	122	do.	347	104	22	0.9	372	20	17	b/	-	348
342	Vernon Spencer	110½	do.	2,845	578	132	110	329	1,833	25	2.0	3.3	1,986
343	E. M. Wallace	52½	do.	1,097	213	36	74	171	197	188	300	-	692
345	Alma Brockman	260±	do.	513	109	31	27	305	166	20	10	-	401
346	William Haas	253	do.	886	122	93	45	397	409	19	1.0	2.4	687
347	B. T. Fudge	Spring	Aug. 13, 1941	294	-	-	-	323	8	11	b/	-	-
349	W. D. Glasscock	178	Aug. 6, 1941	2,675	492	165	98	348	1,717	32	b/	-	1,907
350	do.	52	do.	1,316	204	127	33	384	726	31	0.5	-	1,033
351	do.	47	Aug. 5, 1941	349	84	35	0.8	354	31	21	2.5	0.2	351
352	do.	1,005	Aug. 6, 1941	2,099	379	138	78	336	1,312	23	1.0	3.3	1,515
353	do.	960	do.	1,516	173	97	176	281	907	22	b/	2.6	830

a/ Sodium and potassium less than 5 parts per million. c/ Analyses of selected wells are given in milligram equivalents per liter on page 55.

b/ Nitrate less than 20 parts per million.

Partial analyses of water from wells and springs in Blanco County--Continued

Results are in parts per million.

Well	Owner	Depth of well (ft.)	Date of collection	Total dissolved solids (calc.)	Calcium (Ca)	Magnesium (Mg)	Sodium and Potassium (Na + K) (calc.)	Bicarbonate (HCO ₃)	Sulfate (SO ₄)	Chloride (Cl)	Nitrate (NO ₃)	Fluoride (F)	Total hardness as CaCO ₃ (calc.)
c/354	W. D. Glasscock	162	June 9, 1938	1,750	323	147	17	403	1,032	27	b/	-	1,411
355	C. M. Johnson	288	June 7, 1938	376	88	25	17	329	27	21	36	0.4	320
356	Blanco Independent School District	295	June 1, 1938	1,840	332	167	2	372	1,127	29	b/	-	1,518
357	G. E. Trainer	246	June 3, 1938	643	137	48	14	342	225	21	28	-	539
358	C. E. Crist	32	June 7, 1938	417	92	16	43	360	29	24	36	-	295
359	Blanco State Park	Spring	Aug. 20, 1941	451	105	22	29	329	31	56	46	0.3	354
360	A. W. Koch	27	June 6, 1938	447	16	20	23	378	25	38	39	0.4	372
361	Fred Bremer	27	June 7, 1938	481	113	22	30	360	41	35	63	-	374
362	C. Koch, Sr.	190	June 15, 1938	2,743	434	228	65	177	1,907	22	b/	-	2,020
363	J. H. Seiler	300	do.	920	174	78	14	311	474	26	b/	1.2	758
364	O. E. West	65±	do.	532	-	-	-	329	173	11	b/	-	-
365	Blanco State Park	Spring	Aug. 20, 1941	417	120	13	23	415	25	17	15	0.2	353
366	Alex Nowotny	30	June 17, 1938	280	-	-	-	305	9	11	b/	-	-
367	J. M. Marcolf	30	do.	392	134	8.8	9.2	439	12	12	b/	0	370
368	A. Ethridge	Spring	June 7, 1938	434	138	11	12	427	21	20	22	0.1	392
c/369	A. F. Saunders	358	June 22, 1938	694	126	60	18	262	343	16	b/	2.3	562
370	M. G. Ross	160	do.	346	82	22	9.2	397	13	13	b/	0.4	337
371	Wm. Jonas	296	do.	408	110	25	4.6	354	21	24	49	0.3	375
373	P. G. Vezey	300	July 11, 1938	1,156	226	96	5.3	342	637	19	b/	1.9	959
374	Oscar Jonas	209	July 8, 1938	290	99	7.5	3.4	311	16	11	b/	-	279
375	do.	220	do.	365	83	32	5.5	354	53	12	b/	1.9	350
376	A. Bruemmer	87	July 7, 1938	314	-	-	-	329	19	11	b/	0.6	-
c/377	Henry Bruemmer	171	do.	412	59	38	42	336	90	18	b/	-	304
378	A. Bruemmer	140	July 8, 1938	426	90	43	4.4	329	105	22	b/	-	401
379	Frank Wunderlich	72	do.	329	72	35	5.3	342	33	14	b/	1.8	327
380	do.	60	do.	305	93	15	1.8	299	41	7.0	b/	-	294
381	Hugo Beckman	114	do.	313	89	23	a/	348	16	13	b/	0.3	319
382	H. F. Gass	60	July 8, 1938	637	171	15	11	293	25	48	223	-	489

a/ Sodium and potassium less than 5 parts per million. c/ Analyses of selected wells are given in milligram equivalents per liter on page 55
 b/ Nitrate less than 20 parts per million.

Partial analyses of water from wells and springs in Blanco County--Continued

Results are in parts per million.

Well	Owner	Depth of well (ft.)	Date of collection	Total dissolved solids (calc.)	Calcium (Ca)	Magnesium (Mg)	Sodium and Potassium (Na + K) (calc.)	Bicarbonate (HCO ₃)	Sulfate (SO ₄)	Chloride (Cl)	Nitrate (NO ₃)	Fluoride (F)	Total hardness as CaCO ₃ (calc.)
383	E. Liesmann	85	July 6, 1938	354	-	-	-	299	53	14	9.3	-	-
384	W. W. Krueger	160	do.	302	87	12	10	281	30	14	11	0.3	268
385	Edward Foch	134	do.	410	76	42	16	336	95	16	b/	-	361
386	A. K. Knowl	128	do.	294	86	18	2.1	311	24	11	b/	-	291
388	J. S. Phillips	89	July 7, 1938	458	-	-	-	384	82	13	4.6	-	-
389	Joe Neugebauer	210	do.	450	146	10	11	409	41	31	10	-	406
390	do.	190	do.	384	120	11	7.8	354	28	17	26	0.2	347
401	W. D. Glasscock	300+	Aug. 7, 1941	599	113	71	0.2	439	121	18	b/	-	574
402	H. A. Beckman	59	June 9, 1938	2,127	410	145	31	256	1,309	40	64	1.6	1,619
403	W. D. Glasscock	400	do.	3,367	607	250	61	342	2,216	60	4.8	1.6	2,544
405	Henry Triesch	201	June 2, 1938	552	143	18	28	366	96	38	49	0.2	552
406	Freideleson	126	do.	680	158	31	32	329	262	35	b/	1.7	524
407	G. A. Price, Jr.	110	June 3, 1938	395	114	27	3	439	17	18	b/	-	397
409	Polk Morrisey	48	June 22, 1938	303	82	10	20	293	17	14	15	-	246
412	Charles Lindeman	227	June 2, 1938	1,277	238	112	9	360	640	38	59	-	1,054
413	A. C. Lindeman	190	do.	365	123	9	4	372	19	13	14	-	346
415	Herman Wuest	206	June 22, 1938	415	136	10	6	397	17	17	34	0	381
419	Dan Reeves	Spring	June 6, 1938	352	100	10	24	360	25	16	b/	-	291
420	H. Hohenberger	290	July 11, 1938	331	111	14	a/	366	12	14	b/	-	333
421	Twin Sisters Sch.	98	July 6, 1938	323	-	-	-	329	23	13	b/	-	-
422	Ed. Bindseil	61½	July 1, 1938	462	-	-	-	293	93	19	46	-	-
423	Wm. Schuetz	85±	July 6, 1938	483	-	-	-	342	117	24	b/	-	-
424	do.	42½	July 1, 1938	633	134	17	63	372	60	53	123	0.3	406
425	Fritz Koch	124	do.	329	99	15	7.4	342	20	13	7.1	-	309
426	do.	320	July 7, 1938	592	98	70	16	439	173	19	b/	-	533
427	B. J. Studer	388	July 6, 1938	509	96	59	6.2	397	133	17	b/	2.5	481
429	L. W. Chick	85	July 1, 1938	297	90	17	2.5	336	12	10	b/	-	296
430	T. J. Fleming	90	June 24, 1938	265	79	12	8.3	293	14	8.0	b/	0.4	248
431	Otto Mueller	82	do.	378	95	22	14	329	17	29	39	-	329
432	Joe Preiss	95	do.	368	-	-	-	366	29	17	b/	-	-
433	Charles Preiss	82	June 23, 1938	492	101	49	10	403	112	22	b/	-	455
434	G. C. Artz	100	do.	289	74	25	5.5	329	12	10	b/	-	285
435	Gus Artz	155	do.	293	79	23	3.7	336	12	10	b/	-	294

a/ Sodium and potassium less than 5 parts per million. c/ Analyses of selected wells are given in milligram equivalents per liter on page 55.

b/ Nitrate less than 20 parts per million.

Partial analyses of water from wells and springs in Blanco County--Continued

Results are in parts per million.

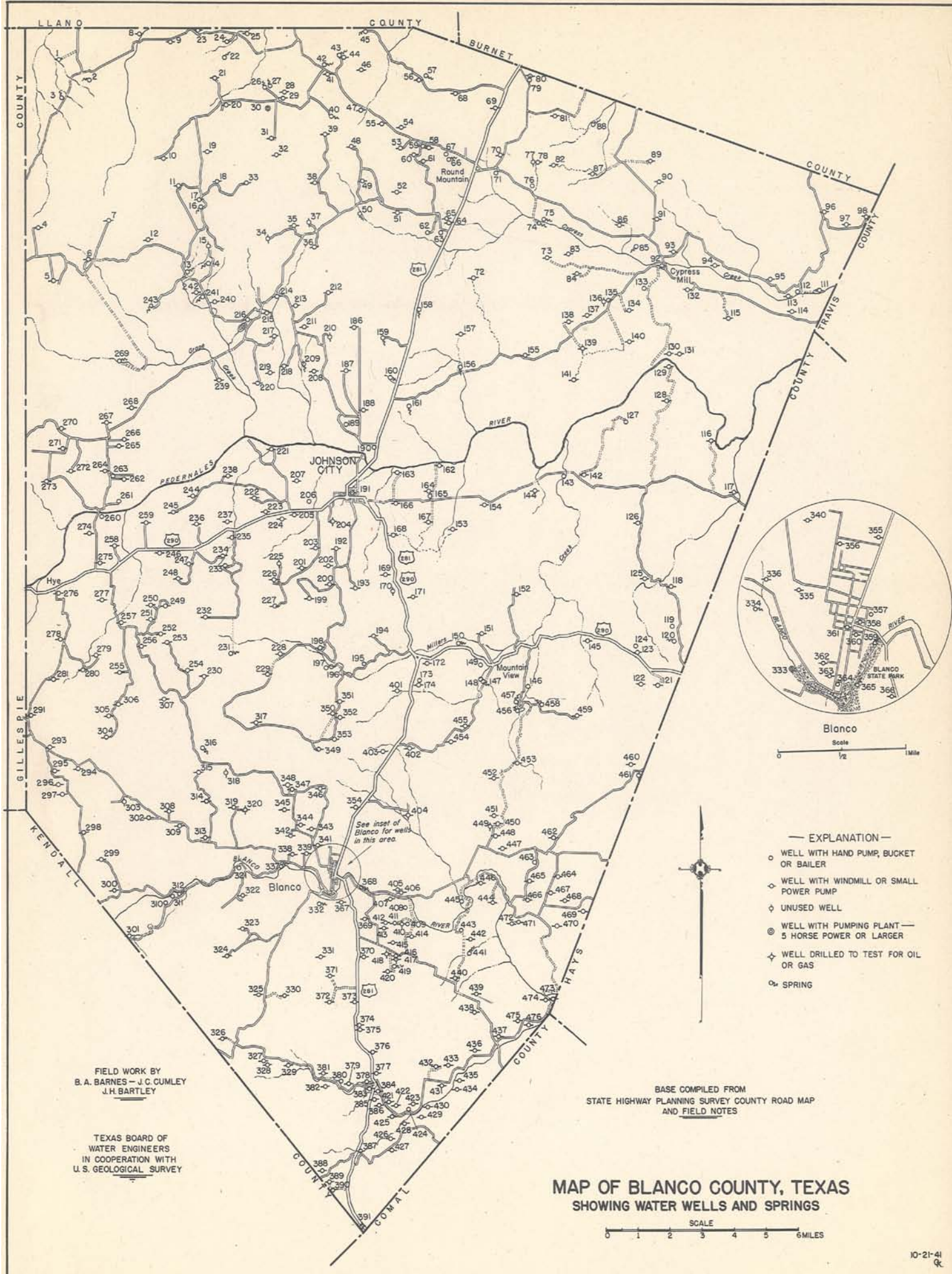
Well	Owner	Depth of well (ft.)	Date of collection	Total dissolved solids (calc.)	Calcium (Ca)	Magnesium (Mg)	Sodium and Potassium (Na + K) (calc.)	Bicarbonate (HCO ₃)	Sulfate (SO ₄)	Chloride (Cl)	Nitrate (NO ₃)	Fluoride (F)	Total hardness as CaCO ₃ (calc.)
436	Frank P. Preiss	68	June 23, 1938	375	-	-	-	384	25	16	b/	-	-
437	Weinstrom Estate	80	July 12, 1938	332	-	-	-	366	8	13	b/	-	-
438	D. C. Flenikin	150	June 8, 1938	334	94	16	10	317	16	20	22	0.2	300
439	-- Rust	125	do.	289	72	17	11	250	24	18	24	0.2	251
441	A. J. Waggoner Spring	June 7, 1938	346	-	-	-	348	24	17	b/	-	-	
442	A. S. Cox	58	do.	295	71	12	21	250	21	16	31	-	228
443	-- Johnson	194	do.	324	84	16	14	287	23	16	30	-	275
444	J. R. Buckner	180	June 15, 1938	291	64	27	3.3	268	41	19	b/	-	272
445	C. F. Crist	35	June 7, 1938	337	95	15	16	348	21	19	b/	0.1	299
448	Arthur L. Nelson	185	Aug. 26, 1941	290	86	16	6.4	323	10	13	b/	0.2	290
450	do.	86	June 14, 1938	385	-	-	-	378	41	11	b/	-	-
452	do.	372	Aug. 26, 1941	724	122	85	7.4	415	288	15	b/	2.6	652
453	do.	65	do.	551	110	60	0.2	390	173	16	b/	-	522
454	Alvin Beckman	231	June 9, 1938	877	226	35	10	342	412	16	b/	0.1	209
455	W. N. Greenhaw	199	do.	3,350	547	284	60	287	2,282	34	b/	2.0	2,535
456	M. T. Burchett Spring	June 17, 1938	328	-	-	-	354	9	16	b/	-	-	
457	do. Spring	do.	253	82	10	3.2	268	10	16	b/	-	246	
458	Arthur L. Nelson Spring	do.	304	-	-	-	323	12	14	b/	0	-	
459	do.	76	Aug. 26, 1941	757	159	64	14	433	280	25	b/	2.2	659
463	J. D. Dodson	235	June 15, 1938	472	91	55	6.4	427	86	24	b/	-	460
465	do.	385	do.	367	88	18	23	311	58	15	12	0.1	296
466	do.	249	do.	327	73	29	9.7	305	49	16	b/	-	303
467	Irwin Higgins	100	June 14, 1938	933	219	21	40	268	37	116	368	0.1	633
470	H. M. Stone	204	do.	440	121	15	15	342	8	27	85	0.1	364
471	J. D. Dodson	250	June 15, 1938	249	50	20	18	232	29	18	b/	0.1	207
472	do.	152	do.	239	49	23	9.7	232	29	14	b/	-	219
473	Herman Schlameus	140	July 12, 1938	344	116	7.1	a/	311	12	13	42	0	319
474	do.	208	do.	317	73	26	8.5	293	41	12	12	0.1	291
475	R. B. Linnartz	120±	do.	732	140	66	11	329	329	24	b/	-	622
476	do.	120±	do.	332	-	-	-	336	9	15	16	-	-

a/ Sodium and potassium less than 5 parts per million. c/ Analyses of selected wells are given in milligram equivalents per liter on page 55.
 b/ Nitrate less than 20 parts per million.

Chemical Analyses--Continued

Results are in milligram equivalents per liter

Well	Owner	Depth of well (ft.)	Date of collection	Total hardness as CaCO ₃ (calc.)	Calcium (Ca)	Magnesium (Mg)	Sodium and Potassium (Na + K) (calc.)	Bicarbonate (HCO ₃)	Sulfate (SO ₄)	Chloride (Cl)	Fluoride (F)	Nitrate (NO ₃)	Total dissolved solids (calc.)
31	Carl C. Smith	116	July 28, 1941	8.78	4.24	4.54	3.07	8.00	1.93	1.92	-	0	23.70
34	J. N. Crider	105	July 21, 1941	22.90	14.86	8.04	0.50	4.90	0.64	8.13	-	9.68	46.80
49	W. A. Woolsey	174	July 23, 1941	3.62	8.76	2.86	1.80	3.50	1.21	0.68	-	0.03	10.84
71	J. J. Rivera	65	Aug. 10, 1938	14.34	6.70	7.64	1.59	7.30	1.20	3.93	-	3.45	31.86
84	J. J. Fuchs	190	Aug. 9, 1938	7.03	4.50	2.58	a/	6.40	0.26	0.37	0.0	0.03	14.11
94	Armin Schrader	151	Aug. 5, 1938	14.82	12.04	2.78	3.47	4.90	0.94	4.71	-	7.74	36.58
124	L. W. Prochnow	130	June 16, 1938	8.30	7.68	0.62	0.51	5.60	0.31	0.96	-	1.94	17.62
168	Mrs. V. F. Smith	92	Aug. 4, 1938	11.38	6.82	4.56	0.70	5.50	2.43	1.97	0.03	2.13	24.16
191	Mrs. Anna F. Grote	92	Aug. 3, 1938	7.94	4.38	3.56	0.60	6.20	1.45	0.79	0.02	0.10	17.08
194	John Felps	370±	Aug. 7, 1941	41.40	22.68	18.72	1.40	5.20	36.98	0.54	0.03	-	85.60
198	Mrs. F. A. Iglehart	165	do.	7.14	4.26	2.88	0.17	5.60	1.29	0.42	-	-	14.62
246	Louis Lindig	99	July 15, 1941	10.18	4.92	5.26	0.69	6.90	0.56	1.64	-	1.77	21.74
247	Fzell Key	100	Aug. 12, 1941	10.68	6.16	4.52	0.33	6.60	3.22	2.17	-	0.02	22.02
249	Otto Vecker	200	Aug. 6, 1941	12.16	9.80	2.36	1.87	4.10	0.64	2.65	-	6.64	28.06
305	Charles Hollenburger	280	July 16, 1941	32.60	22.68	9.92	5.86	6.30	29.75	2.23	0.08	0.10	76.92
310	Peter Smith	260	Aug. 5, 1941	50.50	28.90	21.60	3.73	4.50	49.04	0.56	0.13	-	108.46
322	John A. Adams	142	Aug. 4, 1941	7.18	5.94	1.24	0.49	6.40	0.17	0.39	-	0.71	15.34
330	J. F. Walker	360	July 11, 1938	5.96	4.24	1.72	0.18	5.40	0.21	0.37	-	0.16	12.28
333	City of Blanco	13	July 14, 1941	1.92	1.14	0.78	0.45	1.60	0.27	0.31	0.03	0.16	4.74
354	W. D. Glasscock	162	June 9, 1938	28.22	16.14	12.08	0.76	6.60	21.62	0.76	-	-	57.96
369	A. F. Sanders	358	June 22, 1938	11.24	6.32	4.92	0.78	4.30	7.15	0.45	0.12	-	24.04
377	Henry Bruemmer	171	July 7, 1938	6.03	2.94	3.14	1.81	5.50	1.88	0.51	-	-	15.78



LLANO COUNTY BURNET COUNTY TRAVIS COUNTY GILLESPIE COUNTY KENDALL COUNTY COMAL COUNTY

ROUND MOUNTAIN

CYPRESS MILL

JOHNSON CITY

BLANCO RIVER

BLANCO STATE MARK

See inset of Blanco for wells in this area

BLANCO

Scale 1/2 1 Mile

EXPLANATION

- WELL WITH HAND PUMP, BUCKET OR BAILER
- ◇ WELL WITH WINDMILL OR SMALL POWER PUMP
- ◇ UNUSED WELL
- ⊙ WELL WITH PUMPING PLANT — 5 HORSE POWER OR LARGER
- ⚡ WELL DRILLED TO TEST FOR OIL OR GAS
- ⊕ SPRING

FIELD WORK BY
B. A. BARNES — J. C. CUMLEY
J. H. BARTLEY

TEXAS BOARD OF
WATER ENGINEERS
IN COOPERATION WITH
U. S. GEOLOGICAL SURVEY

BASE COMPILED FROM
STATE HIGHWAY PLANNING SURVEY COUNTY ROAD MAP
AND FIELD NOTES

MAP OF BLANCO COUNTY, TEXAS
SHOWING WATER WELLS AND SPRINGS

SCALE 0 1 2 3 4 5 6 MILES