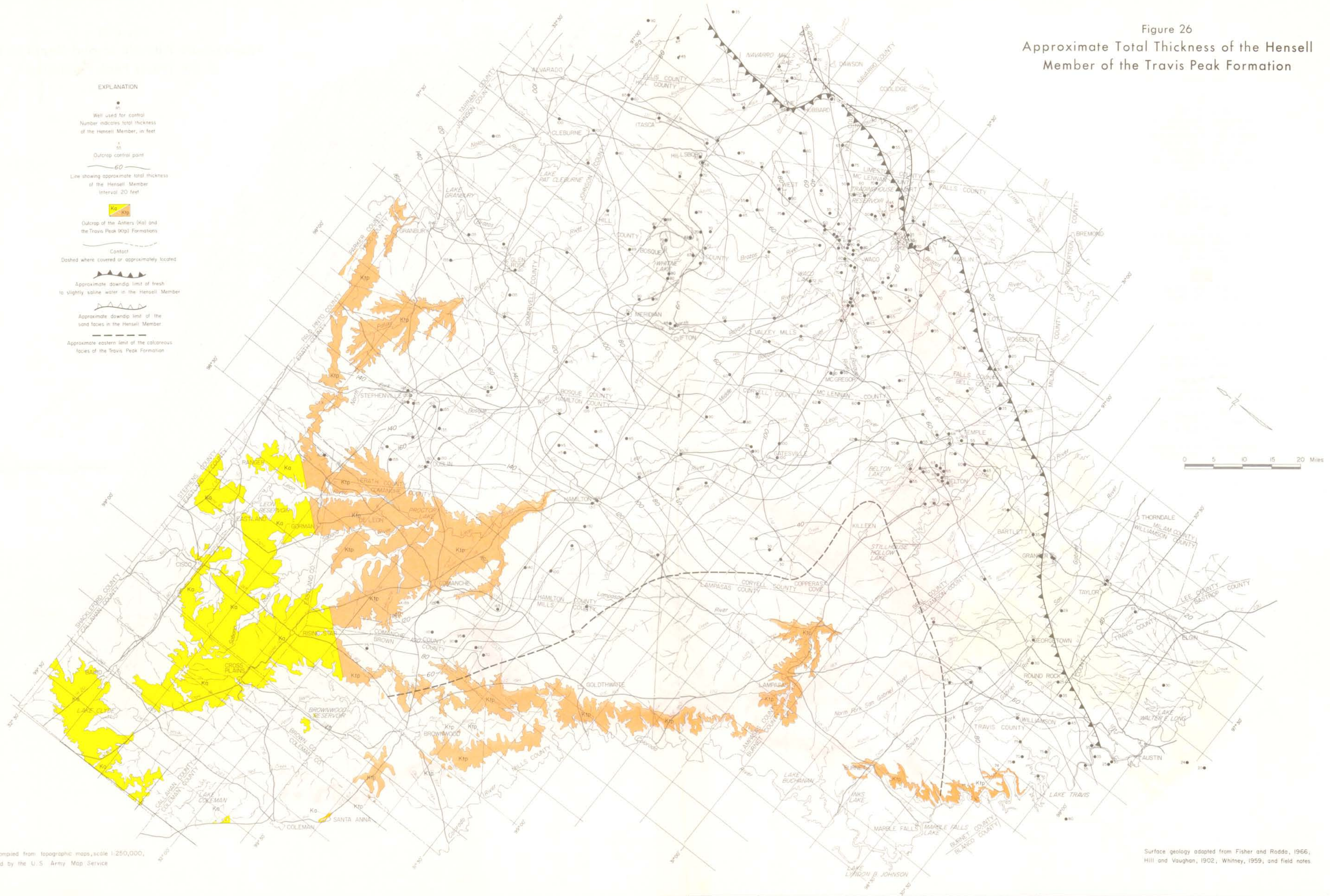


Figure 26
 Approximate Total Thickness of the Hensell
 Member of the Travis Peak Formation



EXPLANATION

- Well used for control
 Number indicates total thickness of the Hensell Member, in feet
- Outcrop control point
- Line showing approximate total thickness of the Hensell Member
 Interval 20 feet
- Outcrop of the Ankers (Ka) and the Travis Peak (Ktp) Formations
- Contact
 Dashed where covered or approximately located
- ▲ Approximate down dip limit of fresh to slightly saline water in the Hensell Member
- ▲ Approximate down dip limit of the sand facies in the Hensell Member
- Approximate eastern limit of the calcareous facies of the Travis Peak Formation

0 5 10 15 20 Miles

Base compiled from topographic maps, scale 1:250,000, produced by the U.S. Army Map Service

Surface geology adapted from Fisher and Rodda, 1966, Hill and Vaughan, 1902, Whitney, 1959, and field notes