

SAN MARCOS PLATFORM

A'

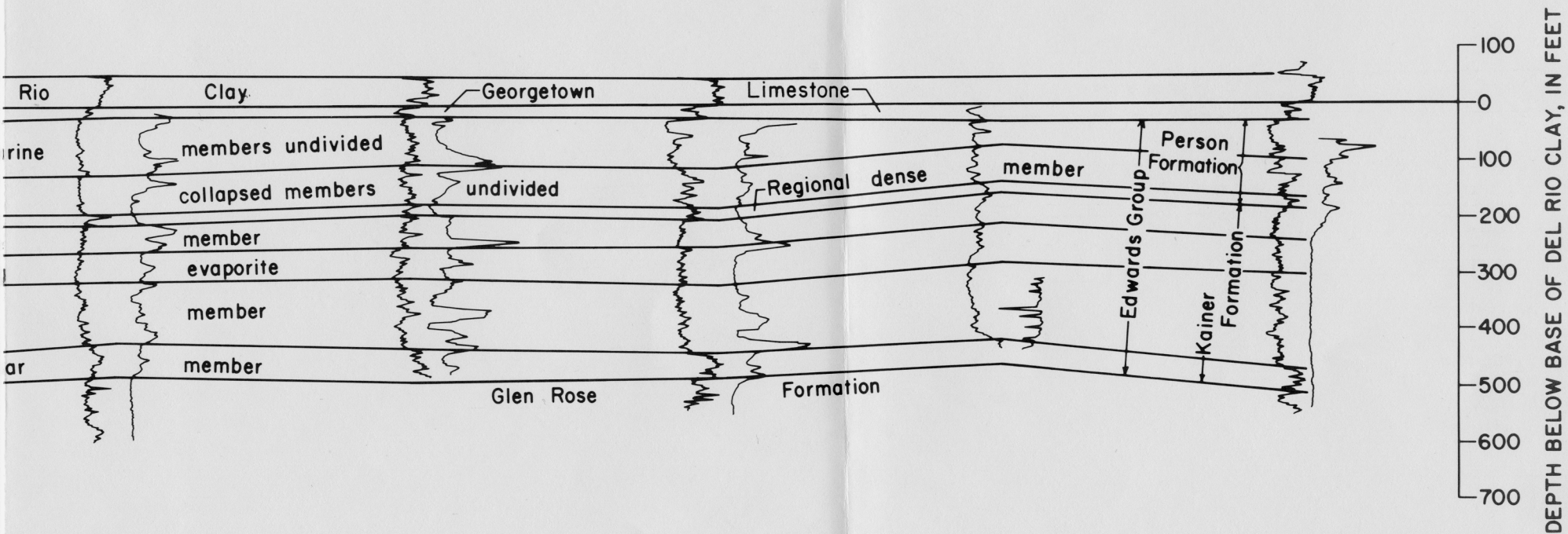
AY 68-28-910
Castle Hills

AY 68-29-506
Feathercrest

AY 68-30-211
Selma

DX 68-23-202

LR 67-09-110
San Marcos



EXPLANATION



sin to the San Marcos Platform

San Marcos Platform stratigraphic units from Rose, 1972. Maverick Basin stratigraphic units from Lozo and Smith, 1964.