

**EXPLANATION**

Total dissolved solids  
in mg/L or ppm

- < 500
- 500—1000
- 1000—3000
- 3000—10,000
- > 10,000



Aquifer outcrop



Fault

Data from:

Anders, R. B., 1967; Baker, E. T., Jr., Follett, C. R., McAdoo, G. D., and Bonnet, C. W., 1974; Broom, M. E., 1968; Broom, M. E., Alexander, W. H., Jr., and Myers, B. N., 1965; Dillard, J. W., 1963; Follett, C. R., 1966, 1970, and 1974; Klemt, W. B., Duffin, G. L., and Elder, G. R., 1976; Payne, J. N., 1972; Peckham, R. C., 1965; Rogers, L. T., 1967; Sandeen, W. M., 1984; Tarver, G. E., 1966; Thompson, G. L., 1966; White, D. E., 1973 (a) and (b); William F. Guyton and Associates, 1970 and 1972; and Winslow, A. G., 1950.

Surface Geology from:

Brown, T. E., Waechter, N. B., and Barnes, V. E., 1983; Brown, T. E., Waechter, N. B., and Owens, F., 1976; Pieper, M. K., Haenggli, W. T., and Wright, A. C., 1975; Proctor, C. V., Jr., Brown, T. E., and Young, K., 1974; Proctor, C. V., Jr., McGowen, J. H., and Brown, T. E., 1979; Proctor, C. V., Jr., McGowen, J. H., and Haenggli, W. T., 1970; and Shelby, C. A., Pieper, M. K., and Wright, A. C., 1968.

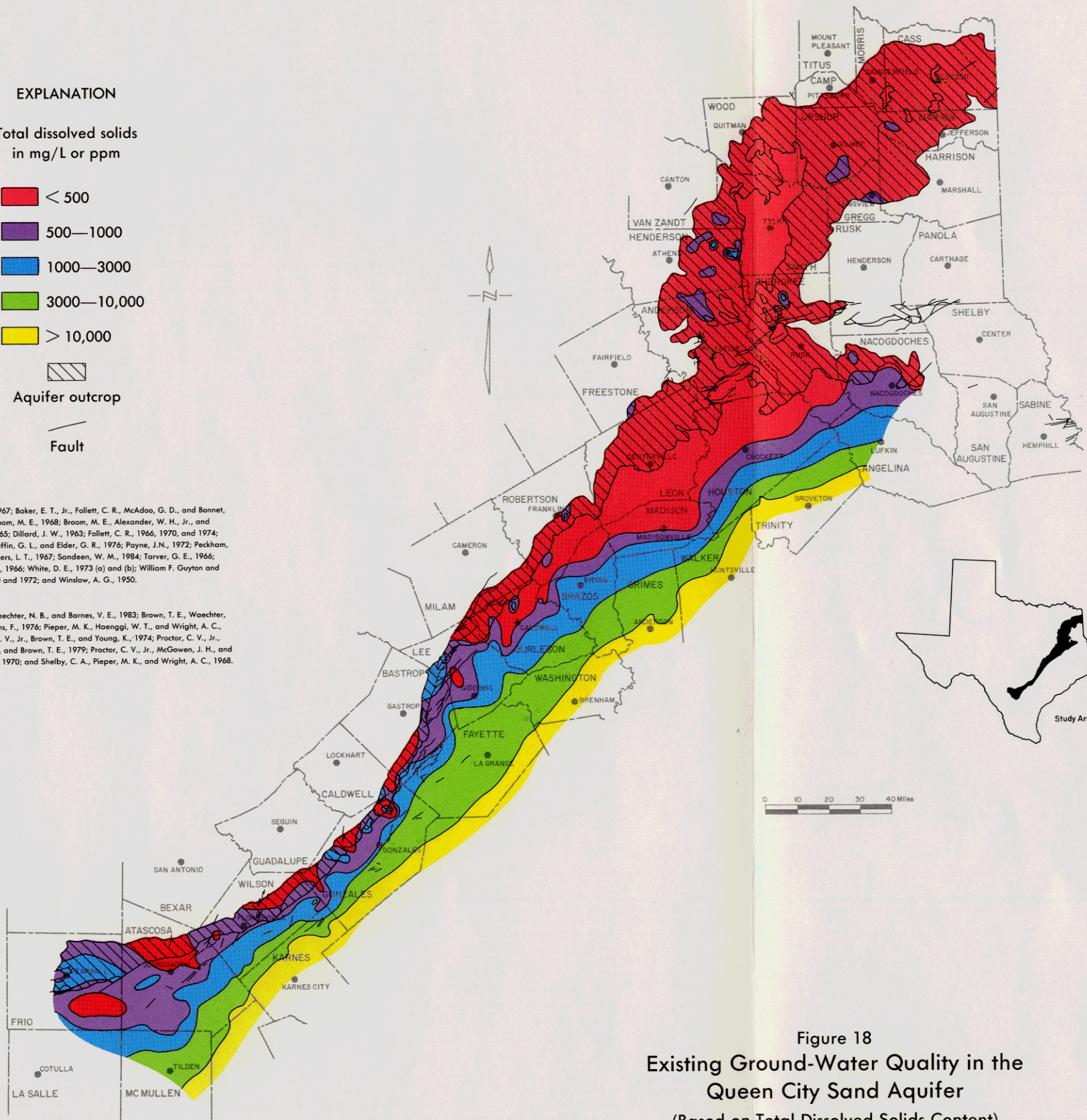


Figure 18  
Existing Ground-Water Quality in the  
Queen City Sand Aquifer  
(Based on Total Dissolved Solids Content)